

## CARE Committee

---

**From:** County Clerk  
**Sent:** Tuesday, September 6, 2022 2:19 PM  
**To:** CARE Committee  
**Subject:** FW: Maui County Committee meeting - CARE - September 8th 1:30pm - Bill 21, CD1  
**Attachments:** Summary - terminology - examples.pdf

---

**From:** Eric Miyasato <eric@hawaiianlights.com>  
**Sent:** Tuesday, September 6, 2022 2:17 PM  
**To:** County Clerk <County.Clerk@mauicounty.us>  
**Subject:** Maui County Committee meeting - CARE - September 8th 1:30pm - Bill 21, CD1

County Clerk,

Attached is my testimony for the meeting this week on the Bill 21, CD1

Thank you.

Eric Miyasato  
808-226-5973

## **Florida Fish & Wildlife**

See page 2 -  
Defined Turtle  
nesting areas

**Use long wavelength (greater than 560 nm AND absent wavelengths below 560 nm) light sources such as amber, orange, or red LEDs without the use of filters, gels, or lenses.** Using long wavelength light sources is less disruptive to marine turtles than white or multi-colored lights.

**Coastal Construction Control line (CCCL)** regulates structures and activities that cause beach erosion, destabilize dunes, damage upland properties or interferes with public access. Also protects sea turtles and dune plants.

## **IDA – International Dark Sky**

- 3000K maximum.
- Adaptive Controls
- Shielding
- Motion control lights

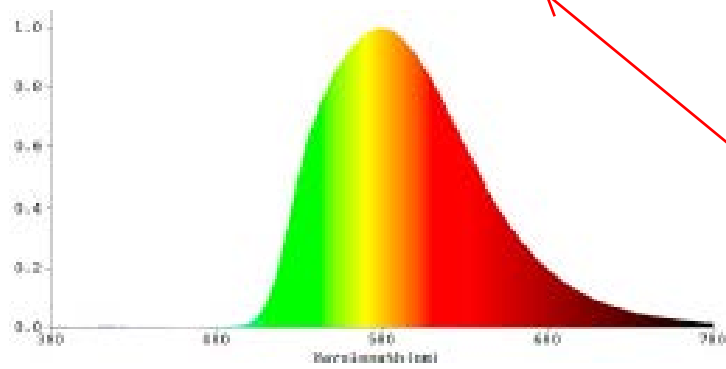
See page 4-6 for  
examples

## **IECC – 2015 (International Energy Conservation Code) (Current standard)**

- Section C405.2.5
  - Exterior lighting Controls
    - Auto Off when Daylight available
    - Façade, landscape lights auto off as a function of dusk/dawn and open/close times.
    - Reduce all other lighting  $\geq 30\%$  no later than midnight to 6AM, one hour after closing to one hour before opening, or when no activity is detected for  $>15$  minutes.
    - Exceptions
      - Emergency Lighting Normally off
      - Lighting for Health & Safety
      - Covered Vehicle entrances
      - Building/parking structures exits for safety, security, or eye adaptation.

Current Building  
department review  
for exterior lights

# FILTERED LED

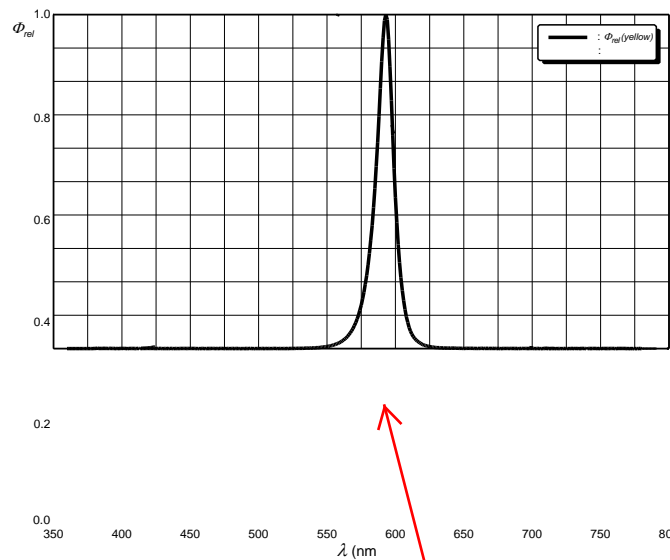


Spectrum Parameters  
Blue content (400nm-700nm): 0.14% Peak wavelength: 579nm

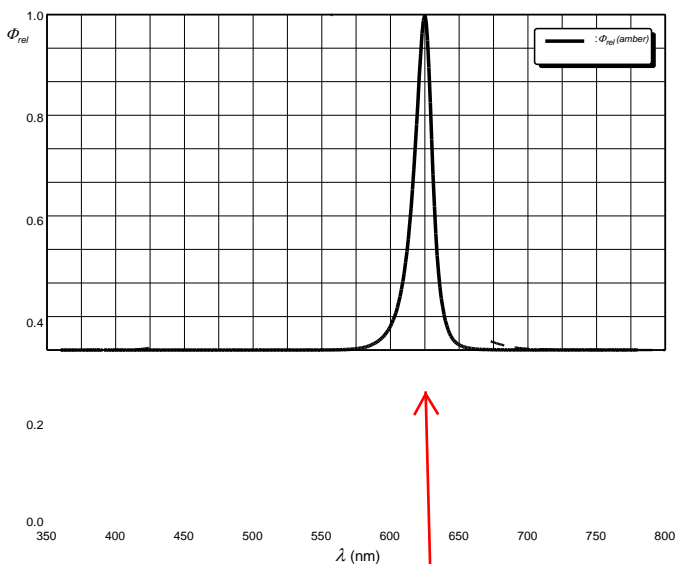
## LED Spectral Emissions

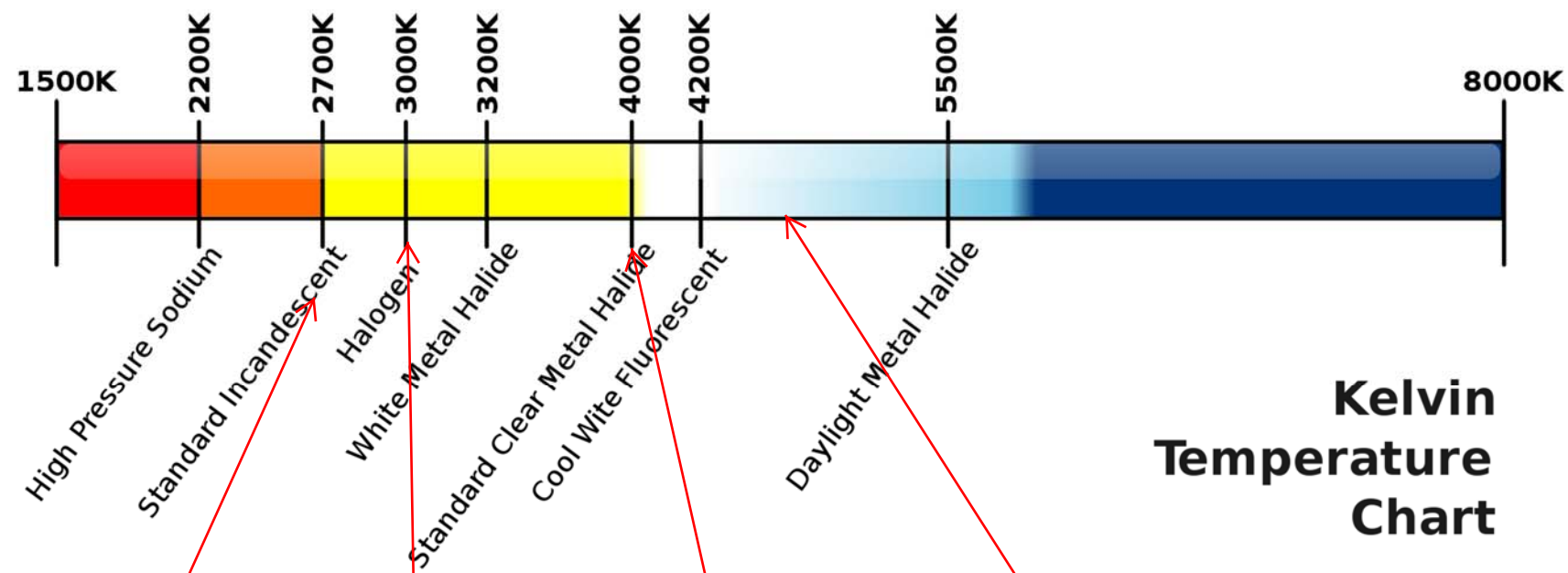
— LED Output

Environmental Yellow / Amber  
590nm peak (583nm min, 595nm max)



Option -ERO (Environmental Red / Orange)  
617nm peak (609nm min, 624nm max)





## Kelvin Temperature Chart

Darksky.org

2700K is used on  
GE LED  
Cobrahead by  
County

International Dark  
Sky - maximum  
recommendation

State DOT  
Maximum

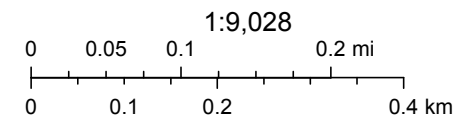
5000K - typical  
standard for  
Baseball & Football

# Coastal Construction Control Line



September 1, 2022

— CCCL Coastal Range Monuments  
▲ Range Monuments



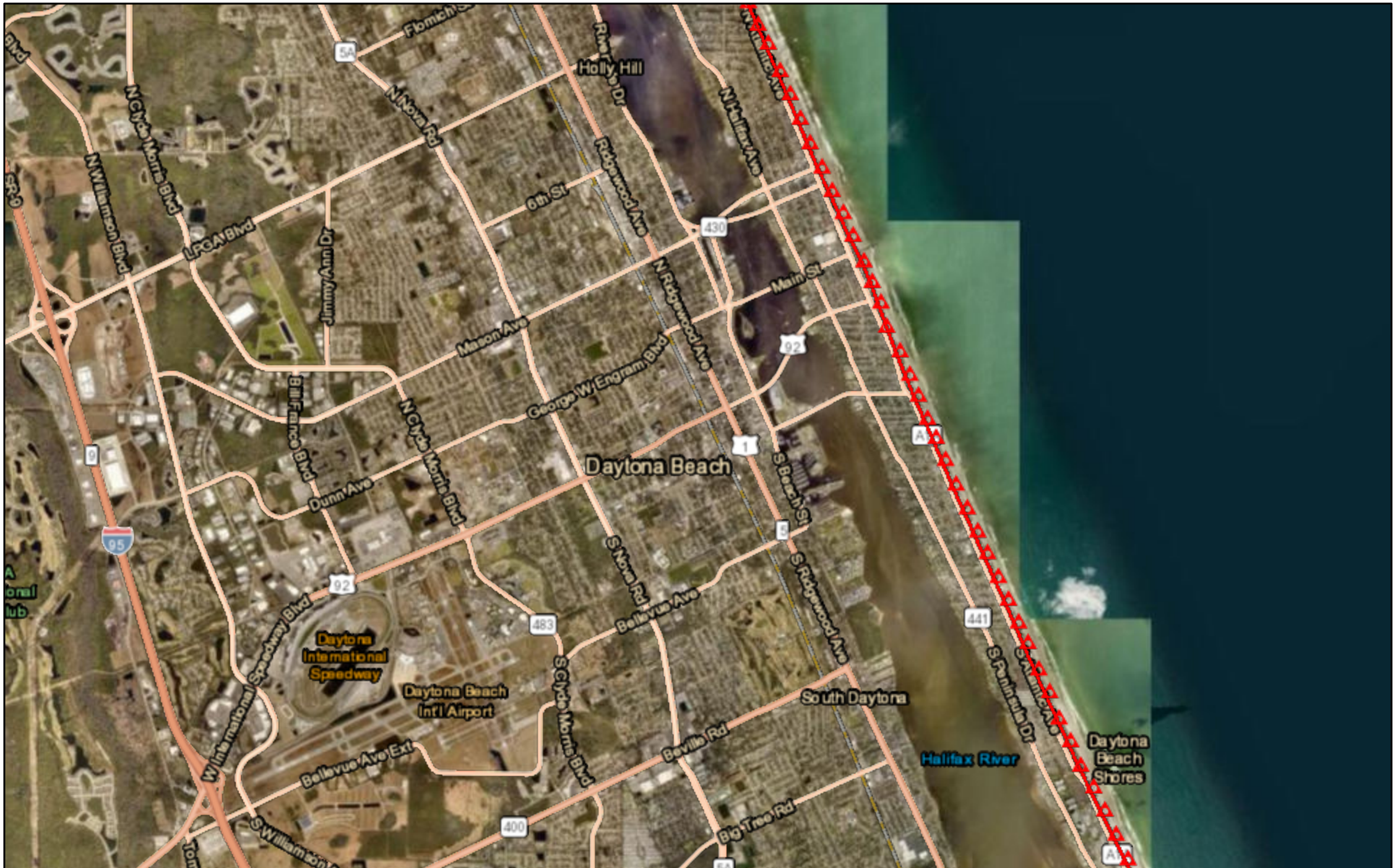
Esri, HERE, Garmin, (c) OpenStreetMap contributors, Esri, HERE, Garmin, (c) OpenStreetMap contributors, and the GIS user community, Source: Esri,

Map created by Map Direct, powered by ESRI. Miami area

Florida Department of Environmental Protection makes no warranty, expressed or implied, or assumes any legal liability or responsibility for the accuracy, completeness, or usefulness of any information, apparatus, product, or process disclosed, or represents that its use

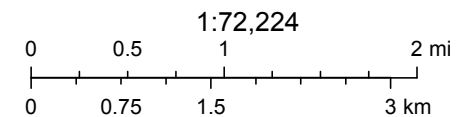


# Coastal Construction Control Line



September 1, 2022

— CCCL Coastal Range Monuments  
▲ Range Monuments



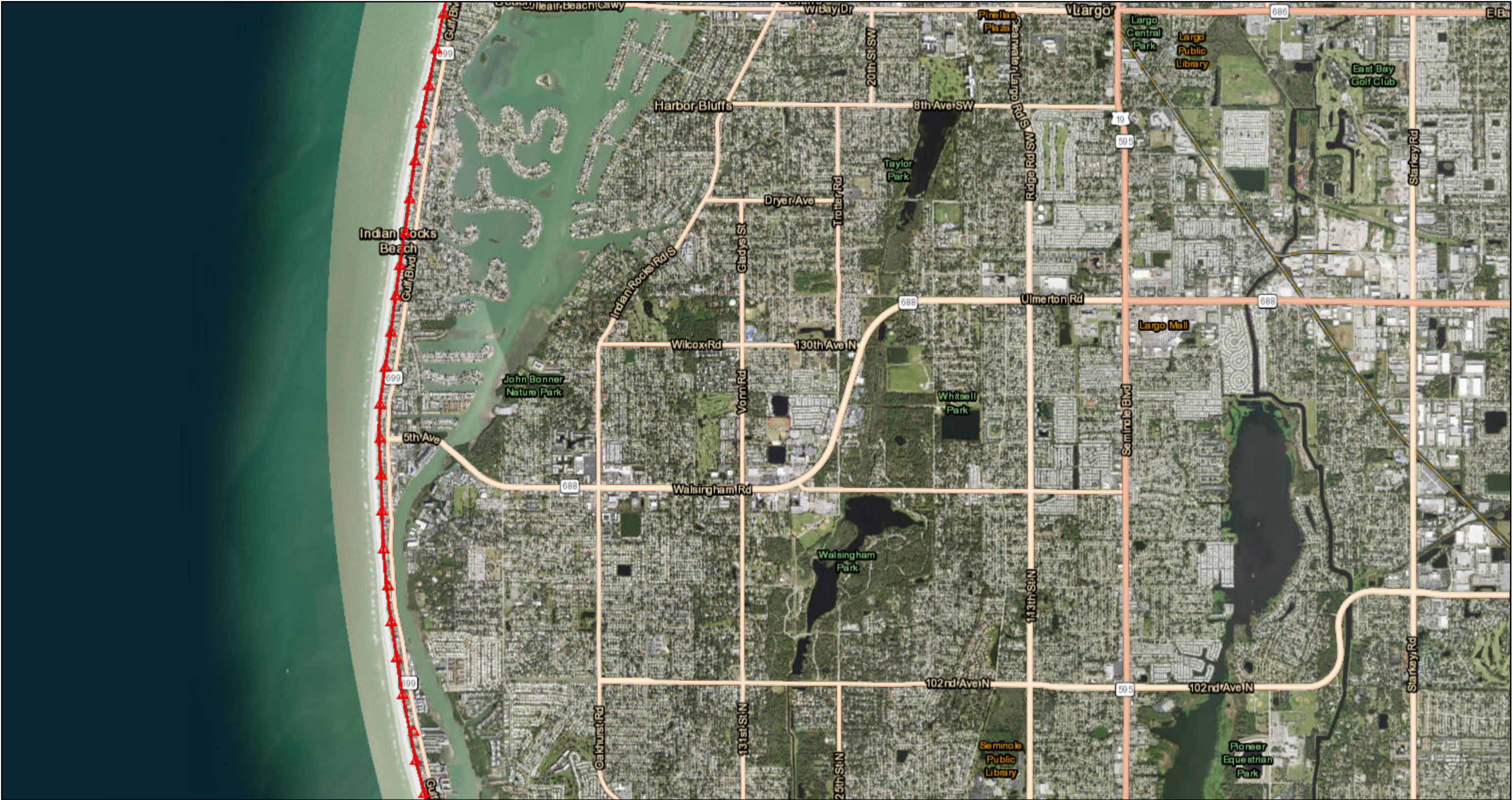
Esri, HERE, Garmin, (c) OpenStreetMap contributors, Esri, HERE, Garmin, (c) OpenStreetMap contributors, and the GIS user community, Source: Esri,

Map created by Map Direct, powered by ESRI. Daytona Beach

Florida Department of Environmental Protection makes no warranty, expressed or implied, or assumes any legal liability or responsibility for the accuracy, completeness, or usefulness of any information, apparatus, product, or process disclosed, or represents that its use

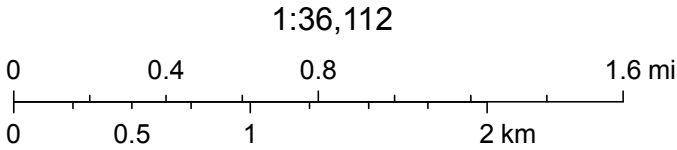


# Coastal Construction Control Line



September 1, 2022

- CCCL
- Coastal Range Monuments
- Range Monuments



Esri, HERE, Garmin, (c) OpenStreetMap contributors, Esri, HERE, Garmin, (c) OpenStreetMap contributors, and the GIS user community, Source: Esri, Maxar, Earthstar Geographics, and the GIS User Community, FDEP, WRM, BCMS