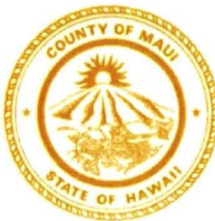


MICHAEL P. VICTORINO
Mayor

SANDY K. BAZ
Managing Director

JOSIAH K. NISHITA
Deputy Managing Director



DEPARTMENT OF MANAGEMENT
COUNTY OF MAUI
200 SOUTH HIGH STREET
WAILUKU, MAUI, HAWAII 96793

October 24, 2022

Honorable Michael P. Victorino
Mayor, County of Maui
200 South High Street
Wailuku, Hawaii 96793

APPROVED FOR TRANSMITTAL

Michael P. Viti 10/24/22
Mayor Date

For Transmittal to:

Keani N.W. Rawlins-Fernandez, Chair
Budget, Finance, and Economic Development Committee
Maui County Council
200 South High Street
Wailuku, Hawaii 96793

Dear Ms. Rawlins-Fernandez:

SUBJECT: **Hālau of 'Ōiwi Art – Fiscal Year 2023 First Quarterly Report**

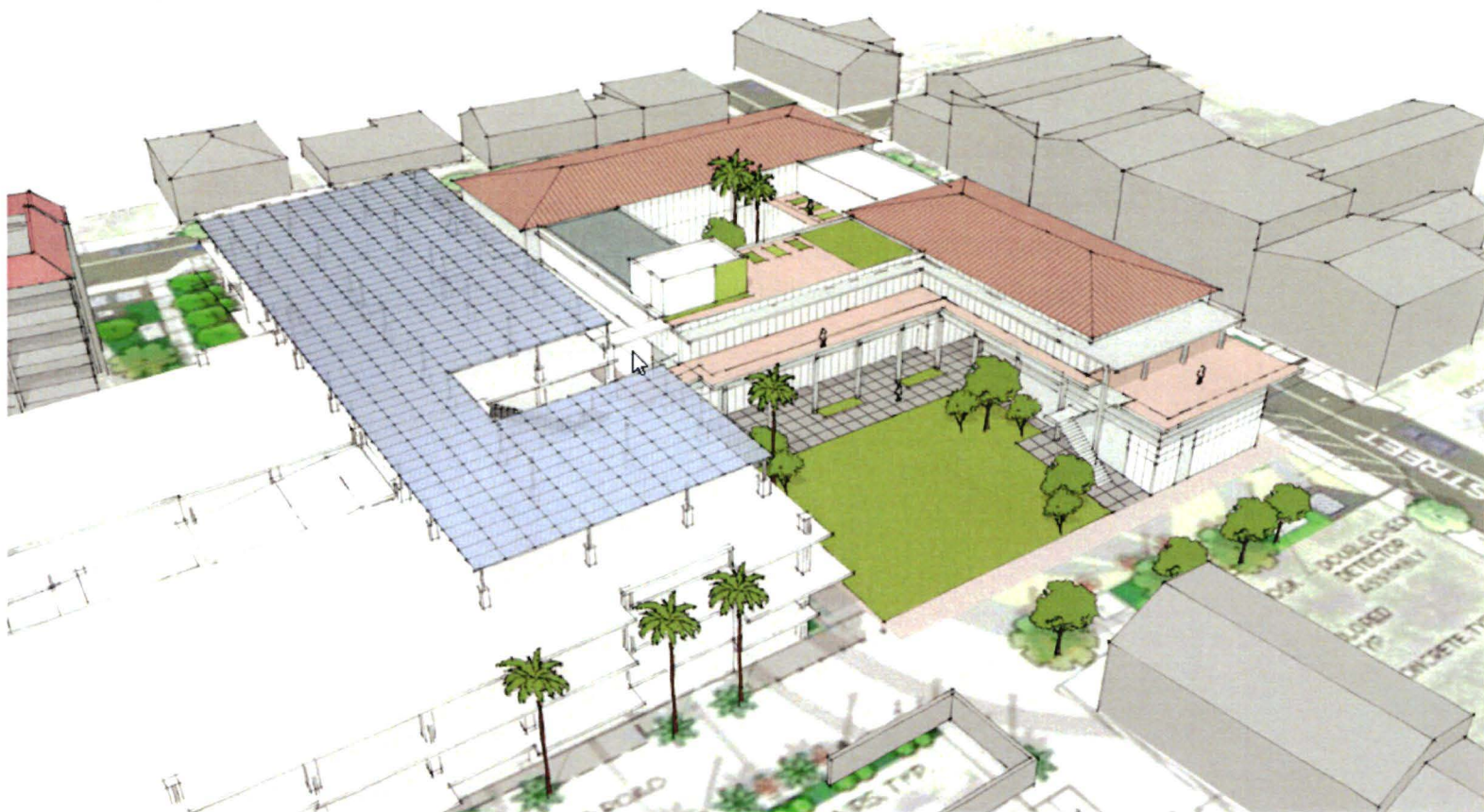
Attached please find the Department of Management's FY23 First Quarterly Report for Hālau of 'Ōiwi Art.

Thank you for your attention to this matter. Should you have any questions or need any clarification, please contact Erin Wade, Chief of Planning & Development, at ext. 6258 or by email to erin.wade@co.maui.hi.us.

Sincerely,

Sandy Baz
Sandy Baz
Managing Director

Attachment



Hālau of 'Ōiwi Art

FY23

First Quarterly Report

County of Maui
Department of Management

200 S. High Street, 9th Floor
Wailuku, HI 96793

www.wailukuLIVE.com
erin.wade@mauicounty.gov

Table of Contents

| | |
|--------------------------------------|----|
| To the County Council | 1 |
| Project Background | 2 |
| Financial Summary | 7 |
| Community Engagement | 9 |
| Project Plans (50% Schematic Design) | 14 |
| Schedule & Next Steps | 20 |

Message from Na Kumu

October 14, 2022

Waikahe nō ke aloha,

We, the Kumu Hula whose names are listed below, are members of the Hālau of 'Ōiwi Art Steering Committee. Initially convened in November 2021, we have participated in regular meetings and discussions with our partners in the Mayor's Office and Ferraro Choi to share the collective needs, wants and desires of Maui Kumu Hula. The proposed 47,000-square-foot center of 'Ōiwi art, which is currently in the design phase, continues to be inspired by Hula and 'Ōiwi arts, and informed by our collective voice to serve this community.

Designed through the lenses of Hula and 'Ōiwi arts, the Hālau of 'Ōiwi Art will be a visible, reliable, and accessible space for the education, performance, preservation, and proliferation of Native Hawaiian art and culture that has never been done in the State of Hawai'i. Hula serves as a nexus for all of our 'Ōiwi arts, and through the funding, design, and construction of this facility, the County of Maui solidifies its commitment to the protection and perpetuation of Hula, language, art, and culture. This space will become a critical part of our identity. As Kumu Hula, our time, energy, and expertise throughout the planning phases of this project represents a shared investment in our community, the benefits of which will endure for generations to come.

Please do not hesitate to reach out to us for further information or clarification. We thank the County of Maui, Mayor Michael Victorino and this Council for your support, and we look forward to continuing this partnership through the completion of this facility.

Me ka 'oia'i'o a me ke aloha,

Nā Kumu Hula 'o:

Hokulani Holt, PhD, Cody Puelo Pata, Kaponō ai Molitau, Moani keala Whittle Wagner,
Kahuli Malua-Pearson Haunani Paredes Francine Mopsey Aaron
ʻŌi ilei Maxwell-Juan `Alika Guerrero-Hu

To the County Council

How would a locally driven, culturally rooted Arts District impact you?

"As a resident of Wailuku, it would make accesible so much more of the culturally rooted things that our family finds valuable. It would raise the quality of life for all of us in the district and those who come to Wailuku. It's a pono way of developing a more diversified economic future without sacrificing the best of who we are and where we live."

Write in response
Survey Respondent #22

The project schedule for the design, permitting and construction of the Hālau of 'Ōiwi Art is aggressive but doable. The Kumu Hula Steering Committee is committed to working with the Department of Managment and their design team, and has finalized the facility program, agreed upon a conceptual floor plan and is working to refine the schematic design. This progress puts the project on course to finalize schematic design in time to secure entitlements and go out to bid for the project within the FY23 CIP schedule.

FY23 Strategic Highlights

Updates to the engineering, soils and traffic reports began in July of 2022 and will continue through September 2022 to inform the project design as well as the Environmental Assessment. Cody Pueo Pata, Cultural Advisor to the Mayor, and Kapua Pimentel, project architect, have completed extensive research into the historic and cultural context of the project site and its surroundings with the intention of informing the design and highlighting meaningful connections.

In July of 2022 the Department of Management added a page to the WailukuLive.org website to provide the public information on the planning and permitting activities while the Kumu developed hoamaui.com to share the mission and eventual programming of the space. The Department commenced a project utilizing ground penetrating radar (GPR) to determine if there are any sub-surface anomalies that might be human remains. This effort was begun in advance of the finalization of the design so as to reduce the chances of having to redesign during construction.

Financial Highlights

The County Council, in its authorization of the FY23 budget, authorized the dedication of \$43 Million in County funds for the creation of the Hālau of 'Ōiwi Art. In addition, the budget recognizes the Department of Management's federal request for an additional \$11 Million, which was championed by Senator Schatz and passed out of the U.S. Senate Appropriations Committee on July 29, 2022.

Project Background

Overview

The County of Maui is designing the Hālau of 'Ōiwi Art in downtown Wailuku at the corner of Church Street and Vineyard Street. The Hālau of 'Ōiwi Art will be a Hawaiian cultural center inspired by Hula. With approximately 47,000 sf of Hula, community gathering, performance, office and retail space, Hālau of 'Ōiwi Art will be designed to accommodate the needs of our Maui island community with visible, reliable and accessible space for our residents and guests.

Project History

The County acquired the properties that now comprise the Wailuku Municipal Parking Lot in 1964 through eminent domain with the goal of economic revitalization. In 2000 the County Council adopted the Wailuku Redevelopment Plan which stated that the property was to be used to “*Redevelop the Municipal Parking Lot with potential opportunities for mixed use development, such as a business hotel, commercial, residential, entertainment, public parking or other uses that*



Figure 26. Market Street, Wailuku Town. Farmer's markets, local festivals and arts and crafts fairs are encouraged to bring residents and visitors back to Wailuku Town.

will create an activity generator.” While the specifics of which uses would be more appropriate evolved over time, the intent of creating parking and an economic anchor for the district endured for 50 years and through every Mayoral administration of the

County of Maui; but lacked the political will to execute. Prior to 2015, many studies and designs were developed but none were funded for construction implementation.

Then in June of 2015 through June of 2017 the Maui County Council invested CIP funds in the creation of a parking & events facility to be built at the former Wailuku Municipal Parking lot. As discussions evolved it became clear that the infrastructure in the immediate neighborhood was inadequate to support any additional investment in the neighborhood and the scope of the project was expanded to include road and infrastructure upgrades to Vineyard and Church Streets.



Throughout 2017 and 2018 the County worked with international economic development experts and facilitated a series of design charrettes, open houses, First Friday activities and online surveys soliciting over 1,110 response, providing feedback on the most desired uses for the project site. The options reflected recommendations to build upon the neighborhoods niche as a civic and arts district, and as supported by

the Wailuku Redevelopment Plan. Through multiple community feedback tools, the top requests for the space included the following as shown in the graphic below.



WAILUKU CIVIC COMPLEX

SO MUCH MORE THAN PARKING

The County proceeded with the design of the parking, infrastructure and community building after presenting the community input to the County Council. In 2019 the Council funded the parking and infrastructure construction, but not the community building, due to concerns of the building mass being too large and the budget too costly in a single fiscal year. Construction commenced on the parking and infrastructure in February of 2019, but no plans were pursued for the community building.

Barely a month after breaking ground on the road and infrastructure improvements, a national state of emergency was issued as the COVID-19 pandemic swept the globe.

How would a locally driven, culturally rooted Arts District impact you?

"I would feel "seen" and respresented in an arts space which is currently dominated by people from the U.S. continent and produces imagery that replicates and popularizes a view of Hawai'i as "paradise" and not the rich lived, historical, and cultured space that it is for those who grow up here.."

Keoni Kuoha
Survey Respondent

How did Hālau of 'Ōiwi Art come about?

In 2020 an international coalition of Kumu Hula organized to ensure cultural practices associated with Hula would not just be sustained, but thrive through the pandemic. Through these discussions the coalition developed the Huamakahikina Declaration (August 2021), that, among other things, identified the need for physical spaces and facilities to support the practice of Hula. During the fall of 2021 the Department of Management worked with the Kumu Hula to see how the previously designed Wailuku facility could be scaled back to reflect earlier feedback while meeting needs for a Hula facility.

A Kumu Hula Steering Committee was created to brainstorm the potential for a facility that might meet the goals for an economic anchor for the neighborhood and support many of the needs for space desired by the Hula community. The committee, which continues to regularly meet about the design includes:

- Kumu Hula Hōkūlani Holt, PhD
- Kumu Hula Pueo Pata
- Kumu Hula Kaponō'ai Molitau
- Kumu Hula Haunani Paredes
- Kumu Hula Kahulu Maluo-Pearson
- Kumu Hula Francine Mopsy Aaron
- Kumu Hula Hi'ilei Maxwell-Juan
- Kumu Hula Moani'keala Whittle Wagner
- Kumu Hula Kamaka Kukona
- Kumu Hula 'Alikā & Kehani Guerrero

Once it was clear these goals could be accomplished, Mayor Victorino included design and construction monies in the FY23 budget proposal, which was unanimously supported by the County Council.

Purpose & Intent

Hula is an 'Ōiwi Art that preserves knowledge and traditions which have been passed down for generations, and has the power to inspire, enlighten, motivate, transform and connect people. The goal for Hālau of 'Ōiwi Art is to create a center through the mana'o of our islands' kumu and hālau hula that will advance the cultural, social and

historical impact of Native Hawaiian 'Ōiwi Art. These efforts can empower all people in Hawai'i and the world to keep these traditions alive for future generations.

The Hālau of 'Ōiwi Art will be dedicated to and inspired by the study, practice, celebration and perpetuation of Hula and the varied 'Ōiwi arts for which Hula serves as the nexus. The Hālau of 'Ōiwi Art is a collaborative effort between diverse groups of Maui hālau hula representing the breadth of Hula Lineages with the support of the County of Maui. It will be a Hawaiian cultural center for our community and the world, advancing the culture of the Hawaiian people through education, classes, workshops, exhibits, activities and events, serving as the first of its kind by any county or the state to create a permanent place for Hula and the associated arts.

Wailuku Arts District

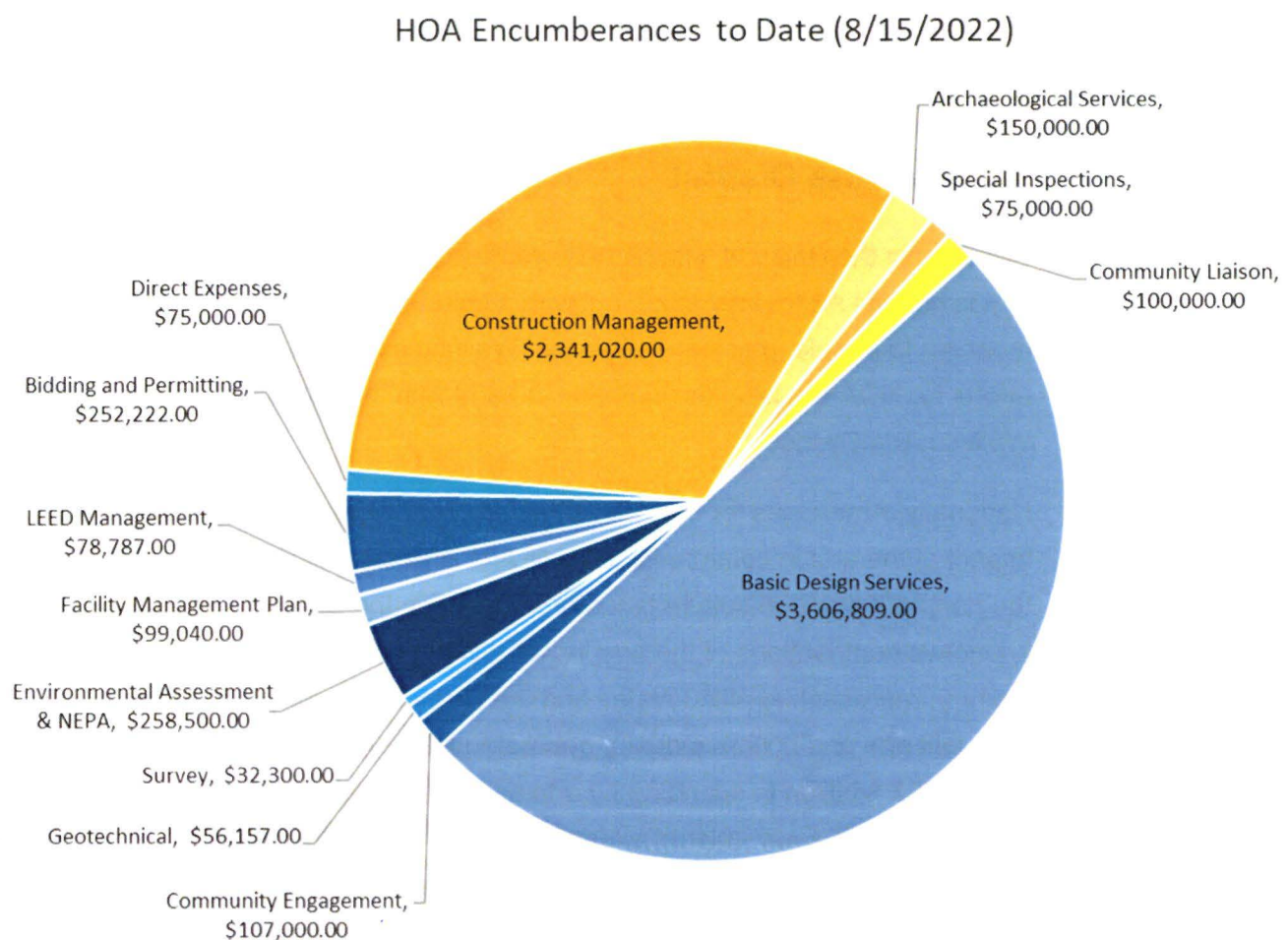
Investing in the Hālau of 'Ōiwi Art allows Wailuku Town to emerge as an Arts District that is not just art for arts' sake, but with a culturally rooted identity giving greater meaning to people, place and stories of Wailuku and Maui County. The planning efforts for HOA are progressing hand in hand with the bigger picture planning for the Wailuku Arts District

Nationally, Americans for the Arts is the foremost organization studying the economic impact of the arts in communities. Their Arts & Economic Prosperity V report studied the nonprofit arts and culture industry's impact on the economy. It documents the economic contributions of the arts in 341 diverse communities and regions across the country, representing all 50 states and the District of Columbia. Nationally, the nonprofit arts and culture industry generated \$166.3 billion of economic activity during 2015—\$63.8 billion in spending by arts and cultural organizations and an additional \$102.5 billion in event-related expenditures by their audiences. This activity supported 4.6 million jobs and generated \$27.5 billion in revenue to local, state, and federal governments (yielding more than five times what government invested).

Internationally, Aotearoa's Ministry of Culture and Heritage is leading the world in supporting culturally-based arts to improve the quality of life for residents and build creative industries that diversify the New Zealand economy. See more on the Wailuku Arts District in Schedule & Next Steps.

Financial Summary

This fiscal year the County Council authorized \$43 Million in County CIP funds for the planning, design and construction of the Hālau of 'Ōiwi Art. Of that, \$7,231,835 has been encumbered within a Design contract and a Construction Management Contract. The breakdown of the tasks associated with those two contracts can be seen in the chart below.



The pie chart above reflects two contracts that have been secured to date using FY23 CIP funds. The first contract is with Ferraro Choi & Associates and encompasses all of the services reflected in blue in the chart above. The second contract is with

"This would be an amazing opportunity to bring vitality to a once vibrant town. Business for locals would thrive and the arts could lead the way to this happening."

Regina Duncan
Survey respondent

"Funding for the arts is a great investment for community prosperity. An arts district would improve financial and cultural prospects and might just improve quality of life for Wailuku residents."

Stephen Fox
Pacific Education and Arts Research
Lab

Dowling Company and includes the archaeological services, ground penetrating radar services and construction management from design through construction.

County Project Financing

Funding authorization came with the expectation of using General Obligation bonds to fund the project; this allows the County to borrow the money for the project and pay it back over time. The budget office expects to finance the project over a 20 year period. There are several macro-economic forces at play relating to this and other CIP projects at this time. Supply chains are improving and with a projected recession on the horizon, construction costs might be lower than anticipated even though borrowing costs may increase.

Preliminary cost estimates for the project were completed in December of 2021 by Rider Levett Bucknall and estimated the cost of construction going up by around 8% per year. The total construction cost estimate was taken from the mid-point of the project construction – approximately 2024. The Department will continue to monitor market conditions to reduce the chances of supply chain issues and labor shortages negatively impacting the cost of construction. If a recession does occur, as predicted, it will be a positive community benefit to have a shovel-ready project with committed funds positioned to be reinvested into the community.

Federal Funding

The Department of Management requested \$11 Million in federal funds, which was championed by Senator Schatz and passed out of the U.S. Senate Appropriations Committee on July 29, 2022. As of the publication of this report, the federal budget has not been finalized. However, the County's request reflects the following:

1. \$ 9.5 million for construction of the facility spaces that will double as emergency shelter and recovery support facilities (10,000 s.f. on the second level of the facility);
2. \$1.5 million for the installation of a photovoltaic array, generator and battery back-up system.

Community Engagement

"Love to see all this and to have a "vote" in the usage! I hope to see a beautiful place where Hawaiian culture is celebrated..."

*May 20th Open House
Participant*

On May 20th, prior to the budget appropriation, the Department in partnership with Nā Kumu Hula hosted a community open house to provide more information about the intended purpose of the facility and invited attendees to share their preferences for the types of programming to be offered in the space.

The top 10 Activities supported by participants included:

- Cultural Performance
- Papa Hula
- Lei Making Workshops
- Gathering for cultural practice
- Ōlelo Hawai'i classes
- Hō'iike (performances)
- Farmers' market
- Weaving
- Kapa Making
- Rotating Gallery

More than 65 people attend the open house event in person. The activities provided at the open house were translated into an online platform where anyone who was not able to attend the in-person event was invited to complete



the same activities. Some examples of what is written in comments from the event can be found in the column to the left.

Community Opinion Survey

As the HOA facility is being planned, the Wailuku town businesses and arts organizations already within the neighborhood have been contemplating the creation of an Arts District. To gauge community sentiment, the Arts District Advisory Committee developed an online survey and joined forces with the Hālau of 'Ōiwi Art Steering Committee to ask questions specific to HOA. The questions provided excellent insight as to how the facility will be relevant to community members that may not participate in Hula specifically but have other interests in the arts, festivals, learning opportunities and general community involvement. The questions included the following:

What types of programs might you participate in if offered?

How would a locally driven, culturally rooted Arts District impact you?

"It would provide opportunities to further expand my knowledge, create joyful and meaningful experiences, and give me the opportunity to support and help Wailuku Town."

Kailani Jackson
Survey respondent

| | |
|--|--------|
| Community events and festivals | 80.44% |
| Arts exhibits | 70.22% |
| Culture or language classes | 62.22% |
| Hula and 'Ōiwi art (lei making, kapa, lā`aulapa`au, etc) | 61.33% |
| Cooking or culinary arts classes | 60.44% |
| Kupuna or keiki activities | 49.78% |
| Poetry, Storytelling or film | 40.89% |
| Health & Fitness | 39.56% |
| Music lessons | 38.22% |
| Other | 13.78% |

What other cultural activities would you like to see coordinated at HOA?

| | |
|---|--------|
| Huaka`i (excursions) or work service projects in cultural landscapes (i.e. Ka`ehu Bay, Waihe`e Dune Preserve, West Maui Watershed, Kepaniwai etc) | 62.96% |
| Art and historic walking tours | 72.69% |
| Oral history projects | 56.02% |

| | |
|---|--------|
| Panel discussion or community presentations | 39.35% |
| Traveling cultural exhibits | 66.67% |
| Other | 6.94% |

The survey also prompted several compelling write-in responses from folks that can be found in the left-hand column throughout this report.

Outreach and Consultations since funding approved

On June 14, 2022, twenty people representing ten different Wailuku arts organizations gathered for a huaka`i to visit each organization's facilities, learn about their existing programming and their plans for the coming years.

On June 24, 2022 staff shared an update on HOA with the Maui Redevelopment Agency and opened the floor for public testimony.



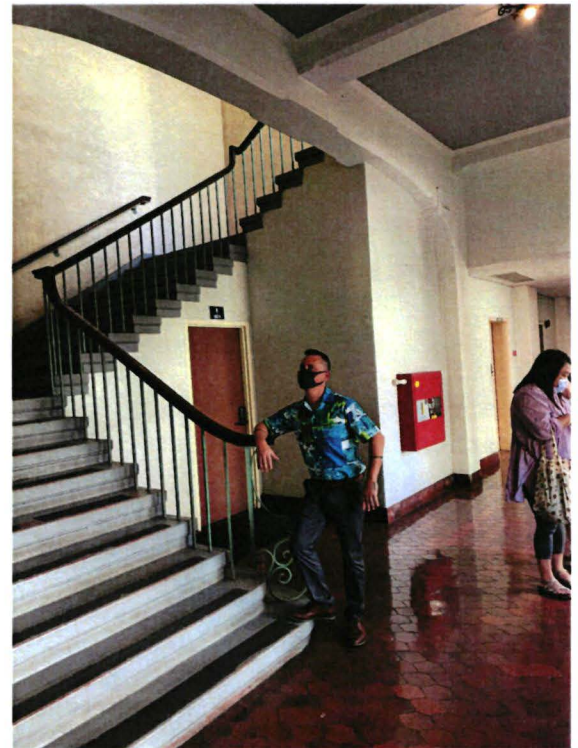
Cultural Impact Assessment interviews on July 6, 2022 with Hōkūlani Holt, and July 12, 2022, with Sissy Lake-Farm.

On July 11th and 13th the community outreach team hosted a series of focus groups with various practitioners of 'Ōiwi arts regarding their expertise, thoughts about options for offerings in the spaces and suggestions for the facility design. The various focus groups included identifying all needs and expectations for each of the spaces including:

- Courtyard/Event lawn
- Kitchen & Event Space
- Learning Spaces
- Studio Spaces
- Workshop Spaces

- Retail/Food & Beverage Spaces

On July 20th Department of Management staff and the project design team visited multiple facilities in Honolulu with elements similar to those being proposed in HOA. The visit included the YWCA Laniākea Facility, The Downtown Art Center, Kamakakūokalani Center for Hawaiian Studies at UH Mānoa, Japanese Cultural Center of Hawaii, and Kīpuka by Nā Mea Hawai`i.



On July 29th the project team visited several facilities currently being used by various hālau throughout Central Maui. The Kumu shared the things they liked and disliked about their borrowed or leased spaces and offered suggestions for the new space.

On July 30th Community open house and celebration at UH Maui College, Nā Kumu Hula shared the vision for HOA with over 400 attendees.



August 2, 2022 community consultation with Leola Leong & Ron Muramoto, Chinese and Japanese historians specific to Wailuku town.

“Art and culture help express a community’s values and creates an elevated sense of awareness for community members and visitors. It would make us so happy, valued, respected and bring the community together!”

*Karine Alvarez,
Survey respondent*

August 8, 2022 community consultation with Erik Fredericksen, project archaeologist for the site and multiple properties in the immediate vicinity over the last 25 years.

August 11, 2022 interview with Wallette Pellegrino, and August 18, 2022 interview with Hōkūao Pelligrino for the updated Cultural Impact Assessment.

The Kumu Hula Steering Committee met multiple times in September to work with the design team on the schematic design. September 15, 2022 – Steering Committee review of floor plans. On September 22, 2022 the Steering Committee reviewed of 50% schematic design and on September 29, 2022, the Steering Committee provided additional feedback allowing the team further refine the building design.

Project Plans (50% Schematic Design)

Project Design Description

Predesign Phase – January 2022 through July 2022 – COMPLETE

The predesign phase was a period of information gathering, planning, outreach and building design conceptualization. The opportunity to redesign the project from the ground up to be specifically suitable for the study, practice, celebration and perpetuation of Hula and the various 'Ōiwi arts generated great enthusiasm and collaboration of our team consisting of the County, stakeholders and architects. This important phase provided a foundation for proceeding into schematic design, and allowed us to confirm that the fit, general massing and layout of the project was feasible.

PRELIMINARY SPACE ANALYSIS



Significant accomplishments during this time included:

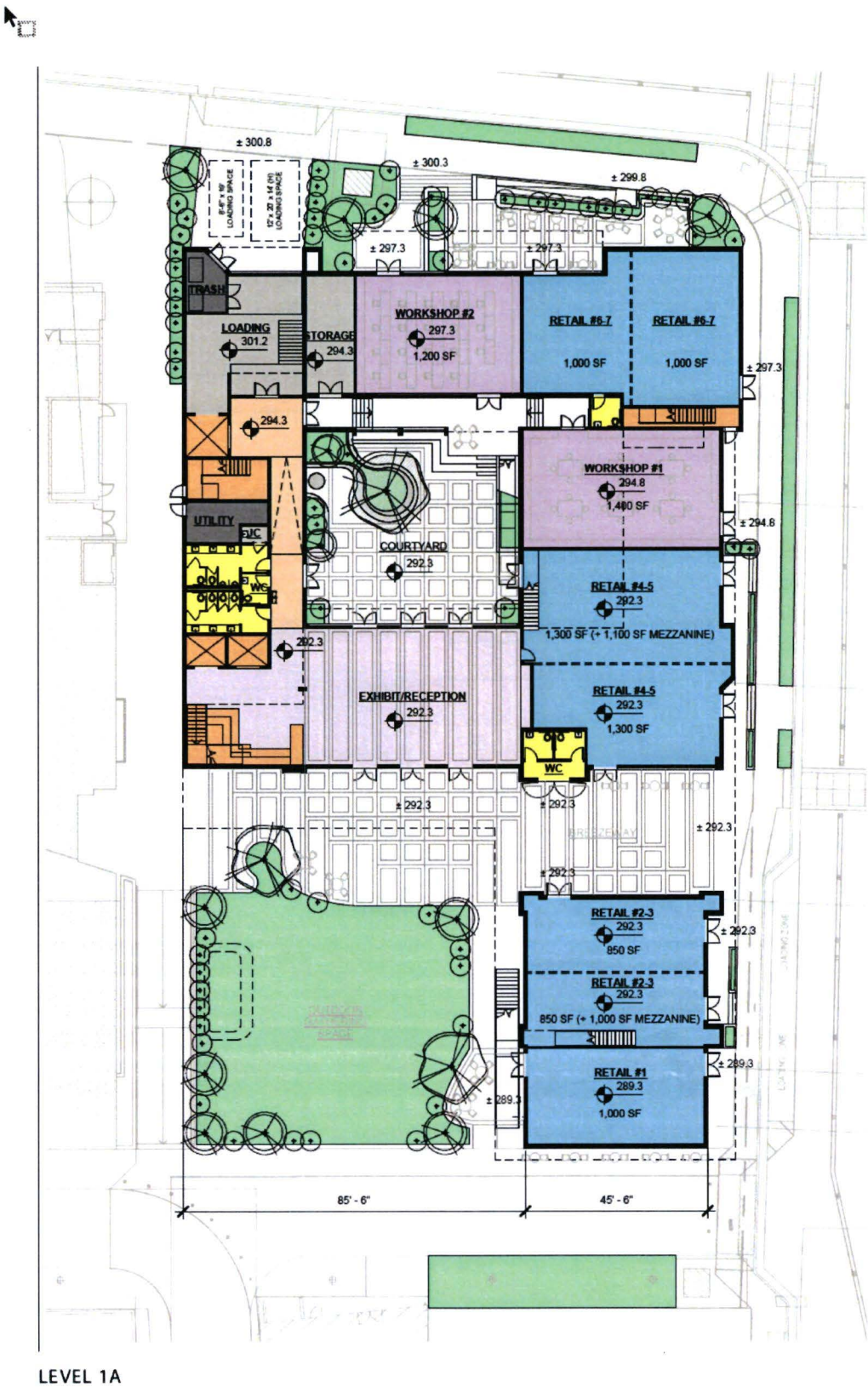
- The formation of a Steering Committee comprised of primary stakeholders, the County of Maui, and the project architectural team.
- Community outreach, involving opportunities for the public to share their hopes and expectations for programs at the facility.
- Updates to the traffic, noise, engineering and cultural impact reports needed for a new Environmental Assessment
- Stakeholder focus group workshops to review and confirm project goals and space requirements,
- Conceptual building design to establish preliminary layouts for, and relationships between, project program elements (i.e. studios, event space, learning areas, event space, etc) and back-of-house support space (i.e. loading, storage, restrooms, circulation, etc).

Schematic Design Phase – August 2022 through October 2022 – UNDERWAY

The Schematic Design Phase moves the design from the sketch-based conceptual plans into a hardline format, with refined floor plans that reflect focus group inputs and known constraints of the site and building code. In this phase the architect's consulting engineers come on board to provide early consultation on structural, landscape, civil, mechanical, electrical and plumbing systems. By the conclusion of the schematic phase, the functionality of the layout and general architectural character of the building will be considered fixed, with time for only minor adjustments as the project enters the design development phase.

The first half (six weeks) of the schematic phase was spent by the design team refining the plans to reflect focus groups' and Steering Committee's needs and assess options for back-of-house functions, vertical circulation and accessibility. The three-dimensional model of the design was continually updated along the way. Considerable effort was needed to assess the best approach to establishing floor elevations at the ground floor in response to the sloping project site (approximately 10 feet of elevation drop from mauka to makai). Also, an assessment of the portions of the building to be hardened to serve as an "Enhanced Hurricane Protection Area" (utilizing Federal funding) was prepared for discussion with the County.

The following pages illustrate the status of the 50% Schematic Design including the ground floor and the second floor. While not shown in the plans, there is a connection between the second floor of the parking structure and the second floor of the building by the elevator vestibule.



LEVEL 1A

"A space like the proposed Hālau of 'Ōiwi Art would provide an art dedicated space to practice hula, learn and take part in cultural art activities and be a hub for culturally rooted practices and conversation"

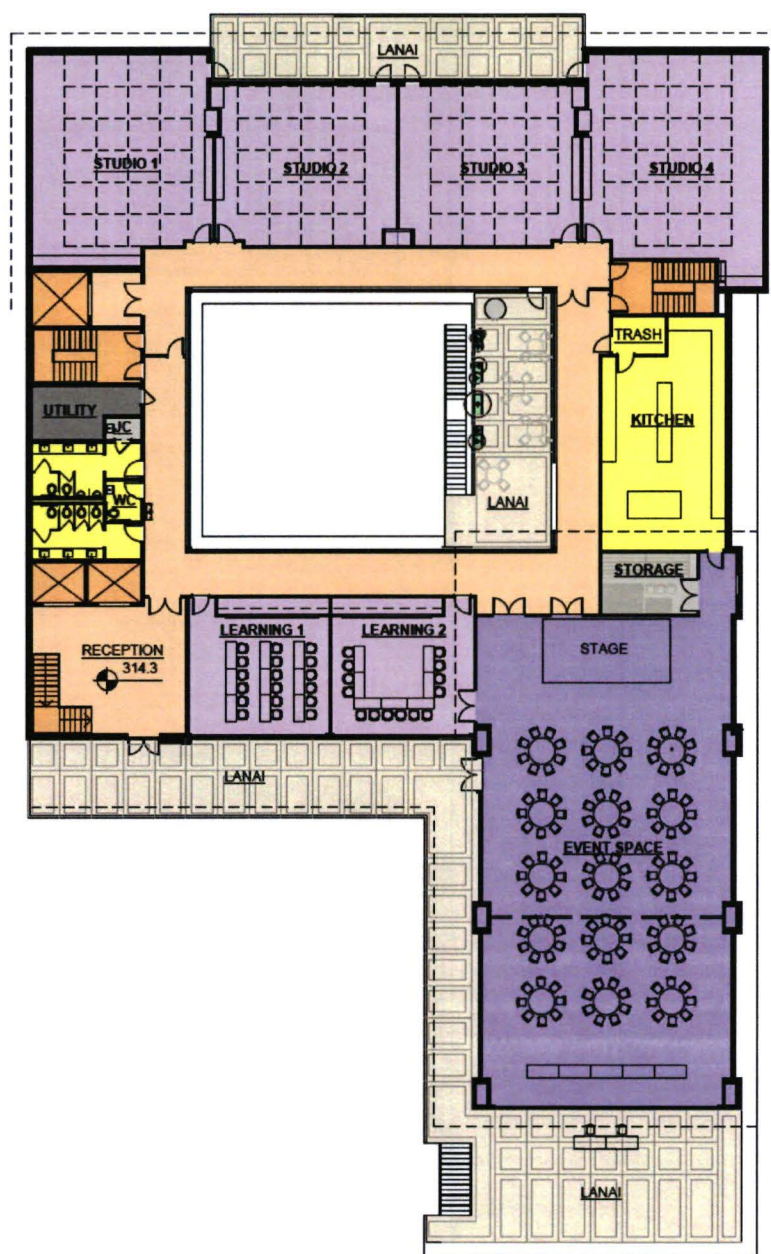
Leah

Survey respondent

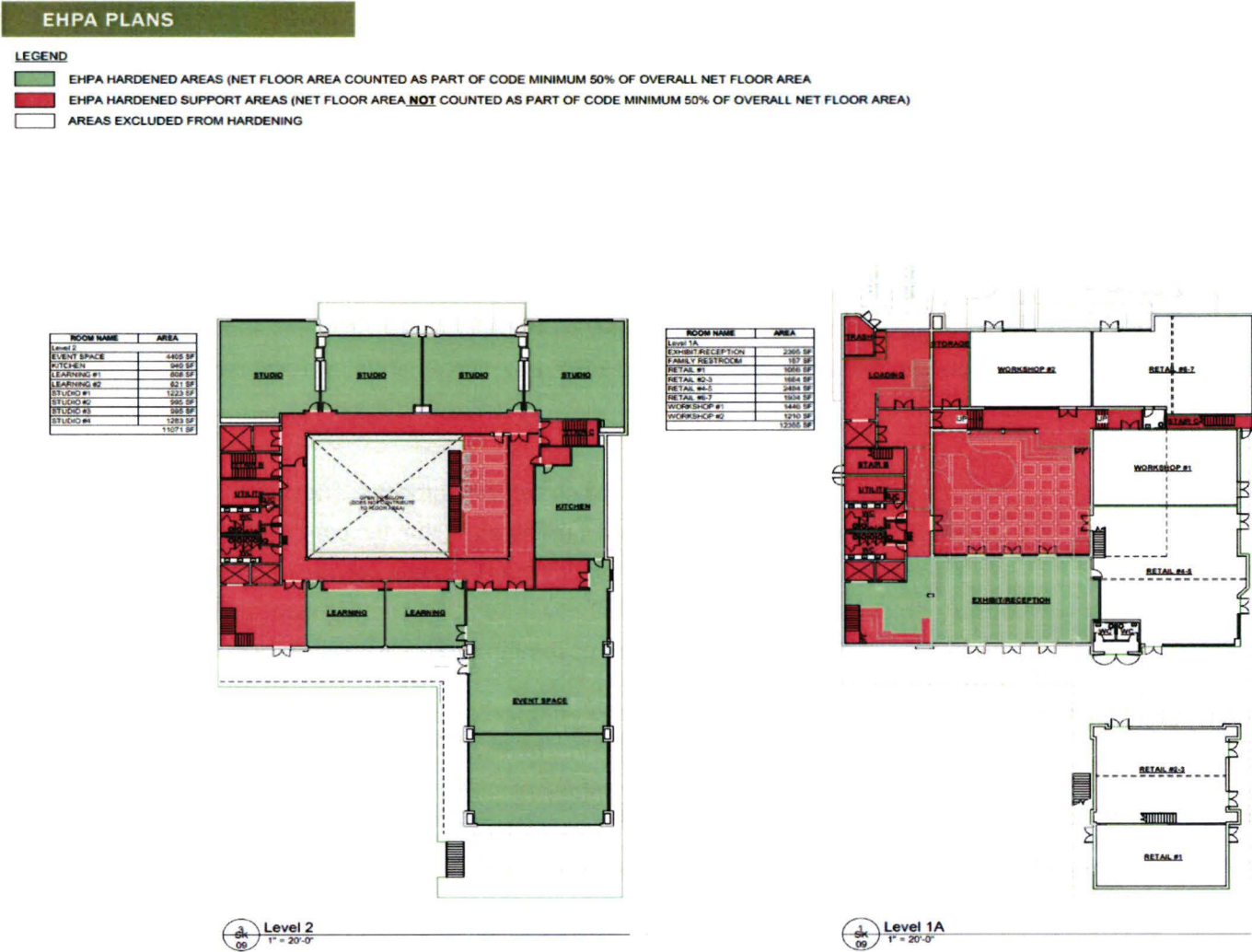
"My hope is that it will broaden the sense of pride not only found within our town, but to the greater public/communities of Maui and create a willingness to participate and contribute to the preservation of arts and cultures."

Jacqueline Goring

Co-Owner of Wailuku Coffee Company



The Hālau of ‘Ōiwi Art will not only serve the community as a gathering space that celebrates Native Hawaiian art and Hula, but will also bolster Maui’s ability to protect, respond to and recover from disasters. Climate change is expected to pose increased challenges to the community with stronger storms, more frequent droughts and wildfires and extreme temperatures. The Department of Management is coordinating closely with the Maui Emergency Management Agency to ensure this facility will enhance the County’s ability to respond to and recover from disasters.



During blue skies the facility’s learning and event space will ensure the protection of Maui County residents by enabling hazard awareness and preparedness training to the community. Emergency preparedness is central to ensuring the safety and well-being of our community during and after a disaster. The Hālau of ‘Ōiwi Art is an opportune location to host large

community events and trainings, and the reception space can house rotating exhibits to increase hazard awareness.

Currently the County of Maui lacks adequate sheltering capacity to withstand Category 3 hurricane force winds, especially in the Wailuku Town area. The Hālau of 'Ōiwi Art reception space, kitchen, learning and event spaces will be constructed as enhanced hurricane protection areas and made available for sheltering. Due to Hawaii's geographic isolation it is



typical that federal, state and non-governmental organization response teams arrive on island in advance of large storms or anticipated disasters. Often these teams are faced with lodging challenges due to high cost and limited availability. The inclusion of shower facilities on level 1B provides MEMA with the ability to lodge traveling emergency response teams.

Post-disaster recovery is a lengthy and challenging process. The community may have limited access to reliable communication and it is important that the community has a place to request assistance, gain information and communicate. The Hālau of 'Ōiwi Art will function as a post-disaster recovery center for the community to seek aid and assistance. The kitchen located on the second floor may be used by non-governmental organizations to perform feeding missions for those needing congregate care.

Prolonged recovery will require the county to establish a Joint Information Center (JIC) to coordinate all incident-related public information with various agencies. The JIC also serves as the central point for all news media. The learning spaces located on the second floor is the optimal location for a JIC due to its proximity to the Emergency Operations Center without interrupting ongoing operational activity.

Having the Hālau of 'Ōiwi Art within one block of the Emergency Operations Center makes this the perfect location for a response and recovery center.

Schedule & Next Steps

How would a locally driven, culturally rooted Arts District impact you?

"It would be EVERYTHING! We have been waiting for this!"

*Lani Morris
Beauty by Nature,
Wailuku Town business*

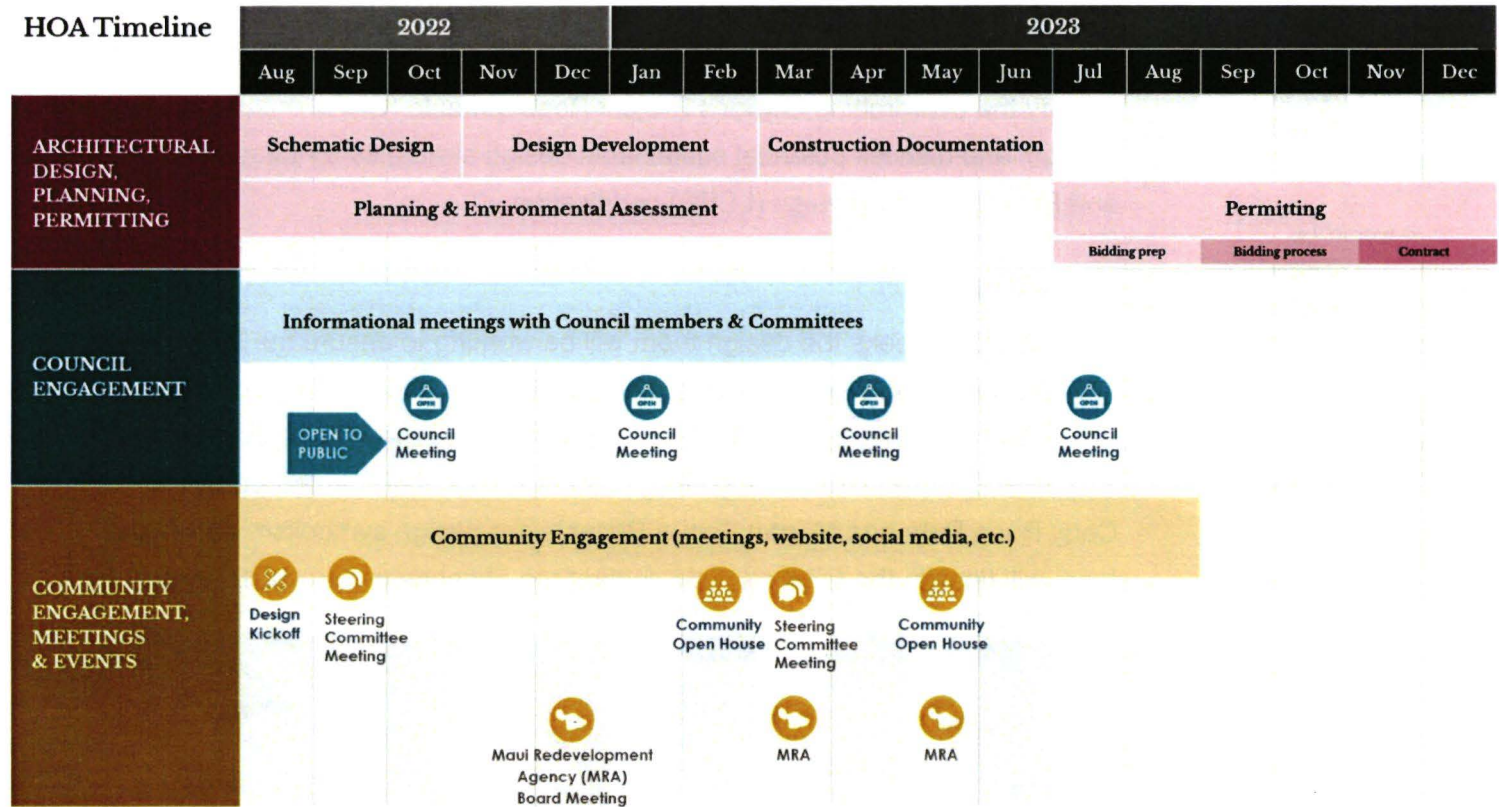
Workshops are currently underway with the Kumu Hula Steering Committee to review and discuss plan refinements and ensure the needs of the practitioners are met. Before the conclusion of the schematic phase, additional workshops will be scheduled with the Steering Committee, County, design team and other key stakeholders to identify the overarching Owner's Project Requirements (OPR), initiate the Basis of Design, and discuss potential sustainable design strategies for Leadership in Energy and Environmental Design (LEED) certification.

Next Steps

In the coming weeks the design team will be working to ensure the facility fits into the Wailuku town neighborhood fabric. They will be studying the Wailuku architectural vernacular closely and will consider the extensive research done in the Native Hawaiian Culture in the Wailuku Region of Maui document authored by Kumu Hula Cody Pueo Pata and Megan Kapua Pimentel for design symbolism and themes. The team will finalize the GPR study to confirm the absence of any subsurface anomalies.



Moving into the second quarter of FY23 the team is on schedule to complete schematic design before the holidays.



While the design development gets underway, the Department of Management will be focusing on how the facility will be managed and operated and will be working with the Kumu Steering Committee to develop the scope for the competitive lease or license agreement to operate all or portions of the facility. Since a significant portion of the building is designed to double as emergency shelter and recovery space, it is expected that the facility lease will be a non-exclusive agreement that allows the Maui Emergency Management Agency to take over portions of the building as needed.

Partnership for the programming of the facility are being built with County agencies like Kaunoa Senior Center and non-profit partners including Tūtū and Me, Hawaii Community Foundation, Hale Hō'ike'ike/Maui Historical Society, and Maui Public Art

Corps. Additional partnerships and planning related to the facility programming and operations will take place over the coming months.

The planning efforts for the Wailuku Arts District will conclude in December of 2023, with recommendations for how to create an arts district that can best support the programs and operations of the neighborhood, the Hālau of 'Ōiwi Art and finally realize the vision spelled out in the Wailuku Redevelopment Plan:

Wailuku's commercial core will have an abundance of life, color and variety that reflects the Town's history and culture. The Town will be alive with local music, hula, arts and crafts. A variety of ethnic cuisine, "bentos" and "pupus" will be available. Seasonal vendors, outdoor exhibits, flower and produce markets, artists and musicians will provide a roster of events that draw local residents and visitors throughout the day and evening. Community festivals and special events will promote the area's traditions. Wailuku will be a comfortable place to "talk story" with friends, neighbors and visitors.

Wailuku Town will remain true to itself where you will find aloha and an emphasis on community values. Wailuku will be a town that lives aloha in a vibrant way. Families, businesses, government, the land and traditions will be bound together in a way that creates a strong sense of community. Wailuku's residents will cherish, protect and share their special place as a legacy for following generations. (p. 21)

BFED Committee

From: Michelle Santos <Michelle.Santos@co.maui.hi.us>
Sent: Tuesday, October 25, 2022 2:48 PM
To: BFED Committee
Cc: Josiah Nishita; Kayla Ueshiro; Michele Yoshimura; Sandy Baz; Stacy Takahashi; Tyson Miyake; Zeke Kalua
Subject: MT#9961 Halau of Oihi Art-Fiscal Year 2023 First Quarterly Report
Attachments: MT#9961-BFED Committee.pdf

NOTE: PLEASE DO NOT FORWARD MY EMAIL TO ANYONE OUTSIDE OF THE COUNTY OF MAUI. YOU MAY CLICK ON THE ATTACHMENT ITSELF AND CREATE YOUR OWN EMAIL TO FORWARD THE DOCUMENT TO ANOTHER PERSON OUTSIDE OF THE COUNTY.

Michelle L. Santos

Office Operations Assistant

Office of the Mayor
County of Maui
200 S. High Street 9th Floor
Wailuku, HI 96793
phone: (808) 270-7855
fax: (808) 270-7870