

PARKS & RECREATION

SOUTH MAUI COMMUNITY PARK RECREATION CENTER (GYMNASIUM)



SOUTH MAUI COMMUNITY PARK RECREATION CENTER (GYMNASIUM)

PROJECT BACKGROUND

RECEIVED AT EAR MEETING ON 10/28/14
Karla Peters, CIP Coordinator
Dept. of Parks and Recreation

MAUI PUBLIC FACILITIES ASSESSMENT(1992)

- Recommended that more non-beach areas would be needed in order to provide a wider variety of active and passive recreation facilities to residents.
- The study noted the following:
“Despite having a relatively large park-area to people ratio, Kihei’s parks are lacking in many facilities.”
- To address this regional need, the County of Maui purchased undeveloped land in 2001 for the South Maui Community Park.

SOUTH MAUI REGION PARKS AND OPEN SPACE MASTER PLAN

- Prepared for the County of Maui by Chris Hart & Partners in October 2003 to assess the region’s parkland and facility requirements and prepare conceptual plans for the development of the South Maui Community Park.
- Supported by the Maui County Council Resolution No.06-88.

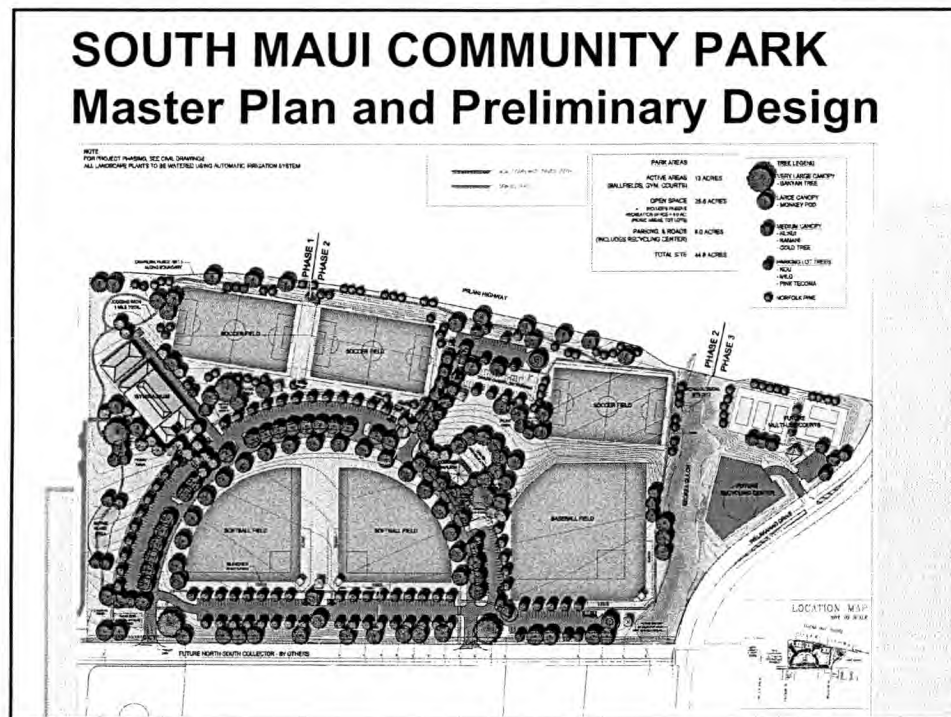
SOUTH MAUI REGION PARKS AND OPEN SPACE MASTER PLAN

- Study identified a need for an additional 9 tennis courts, 3 tot lots, 10 sport courts, and a gymnasium to accommodate demand to 2010.
- Study also identified an existing shortfall of 104.7 acres of sub-regional parkland in the Kihei-Makena Community Plan area.

SOUTH MAUI COMMUNITY PARK Master Plan and Preliminary Design

- Funding appropriated in FY 2005 for the master plan and design of the South Maui Community Park.
- Application submitted for Special Management Area Permit, Project District Phase 2 and HRS Chapter 343 Environmental Assessment in October 2006.

- Project site = 44.83 acres.
- Master plan of park complex to include gymnasium, 3 soccer fields, 2 softball fields, 5 multi purpose outdoor courts, pavilion and amphitheater, 3 tot lots, 3 comfort stations, on- and off- site infrastructural improvements.



SOUTH MAUI COMMUNITY PARK Master Plan and Preliminary Design

- Community Meetings reflected enthusiasm and consensus of proposed Master Plan.
- Overall concern was to have park completed at once and not phased.
- Other requests were for a commercial kitchen in the gym facility, playground equipment, installation of photo voltaic lighting, and sports facilities that could be utilized by the school and organized sports groups in the community.
- Maui Planning Commission Approval in July 2007.

SOUTH MAUI COMMUNITY PARK Phase IA

- Funding appropriated in Fiscal Years 2008, 2009 and 2010 for the construction of Phase IA included:
 - Intersection and underground utility improvements
 - 1 Soccer field with lights
 - 1 Softball Field with lights
 - 2 Restrooms
 - 1 Scorekeepers booth/concession area

SOUTH MAUI COMMUNITY PARK Phase IA

- Playground
- Paved Jogging Path
- Irrigation, Grassing, Landscaping
- Picnic Tables, Benches, BBQ's
- 113 Parking Stalls which includes 6 Accessible Parking Stalls

South Maui Community Park Phase 1A



South Maui Community Park Phase 1A



- Groundbreaking held on December 3, 2009.
- Grand Opening of the South Maui Community Park Phase 1A was held on July 29, 2011.

South Maui Community Park Phase 1B Recreation Center (Gymnasium)

- Funding appropriated in Fiscal Year 2013 for the design of the South Maui Community Park Recreation Center (Gymnasium).
- Department contracted Nishikawa Architects, Inc. as primary design consultant.

**South Maui Community Park
Phase 1B
Recreation Center (Gymnasium)**



Proposed Recreation Center is located at the northerly end of South Maui Community Park.

**South Maui Community Park
Phase 1B
Recreation Center (Gymnasium)**

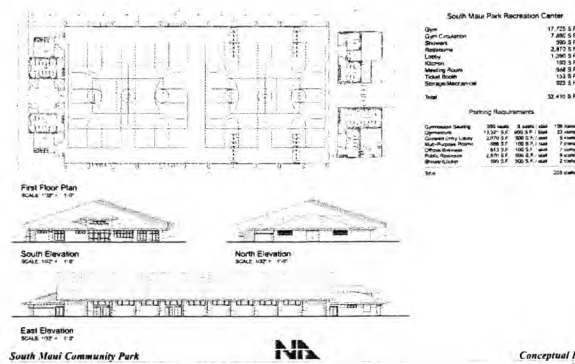
- Preliminary Design Presentation by Nishikawa Architects, Inc.

South Maui Community Park Phase 1B Recreation Center (Gymnasium)



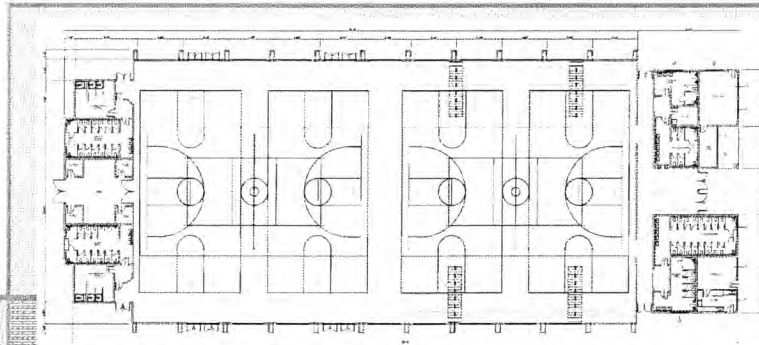
- Current Design based on original footprint.
- Utilize Master Plan Layouts.

South Maui Community Park Phase 1B Recreation Center (Gymnasium)



- Plans and Elevations

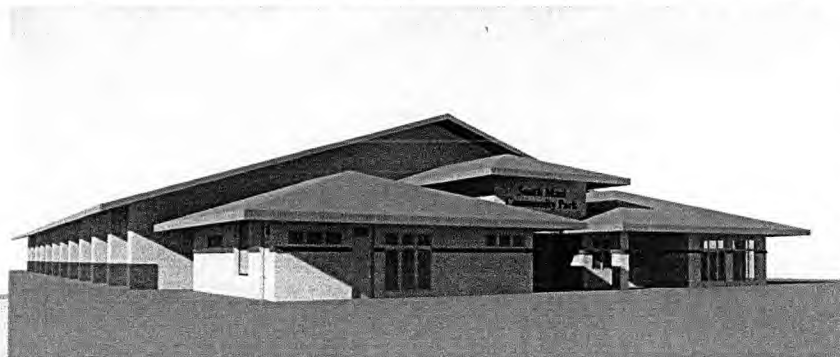
**South Maui Community Park
Phase 1B
Recreation Center (Gymnasium)**



First Floor Plan

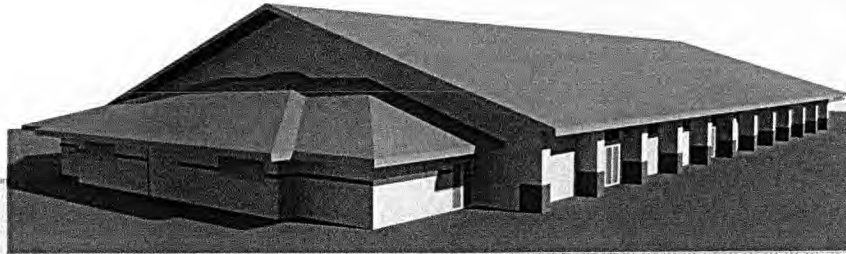
- Plan Utilizes 2 Main and 4 Cross Courts
- Courts serve as a Multipurpose Area

**South Maui Community Park
Phase 1B
Recreation Center (Gymnasium)**



- Front Entry View from Parking Lot

**South Maui Community Park
Phase 1B
Recreation Center (Gymnasium)**



- Rear View from Kihei Elementary School

**South Maui Community Park
Phase 1B
Recreation Center (Gymnasium)**



- Interior View – 2 Main & 4 Cross Courts
- Divider Curtain Between Courts

**South Maui Community Park
Phase 1B
Recreation Center (Gymnasium)**



- Model Presentation

**Mahalo for your time as
we continue to address
the needs of our
community and develop
new facilities where our
friends, families and
visitors recreate and make
memories.**

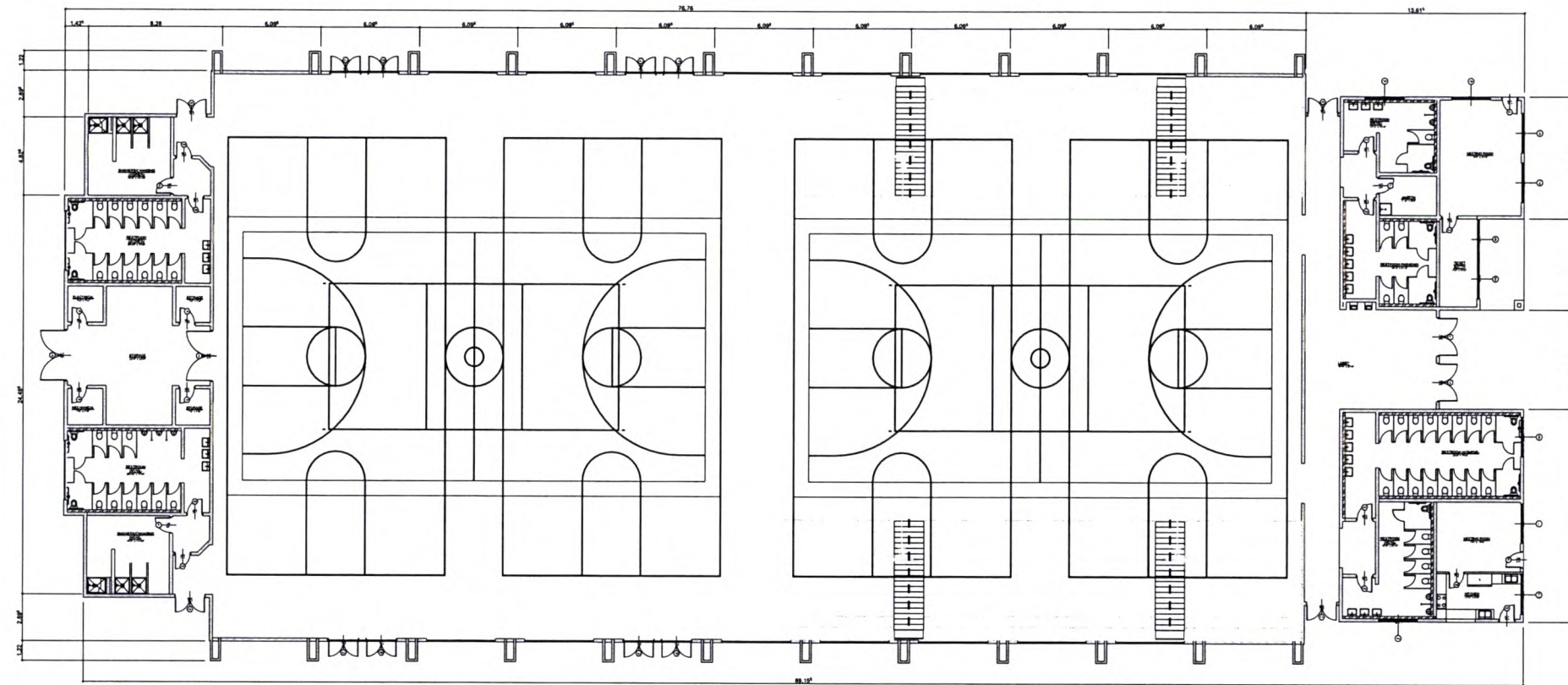




SOUTH MAUI COMMUNITY RECREATION CENTER



DATE: 10-24-14



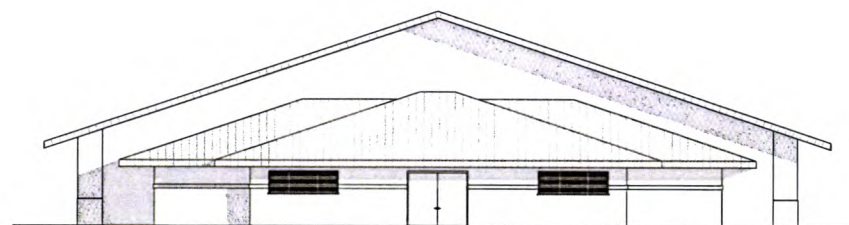
First Floor Plan

SCALE: 1/32" = 1'-0"



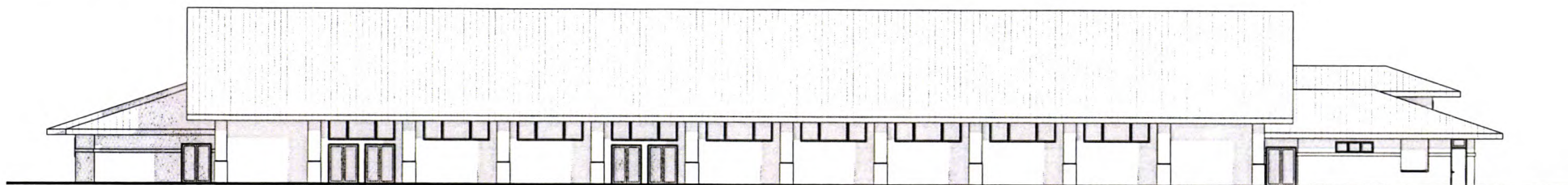
South Elevation

SCALE: 1/32" = 1'-0"



North Elevation

SCALE: 1/32" = 1'-0"



East Elevation

SCALE: 1/32" = 1'-0"

South Maui Park Recreation Center			
Gym			17,725 S.F.
Gym Circulation			7,880 S.F.
Showers			590 S.F.
Restrooms			2,870 S.F.
Lobby			1,390 S.F.
Kitchen			190 S.F.
Meeting Room			688 S.F.
Ticket Booth			153 S.F.
Storage/Mechanical			925 S.F.
Total			32,410 S.F.
Parking Requirements			
Gymnasium Seating	950 seats	6 seats / stall	159 stalls
Gymnasium	13,321 S.F.	600 S.F. / Stall	23 stalls
Covered Entry Lobby	2,070 S.F.	500 S.F. / stall	5 stalls
Multi-Purpose Rooms	688 S.F.	100 S.F. / stall	7 stalls
Offices/Business	613 S.F.	100 S.F. / stall	7 stalls
Public Restroom	2,870 S.F.	500 S.F. / stall	6 stalls
Shower/Locker	590 S.F.	500 S.F. / stall	2 stalls
Total			209 stalls