



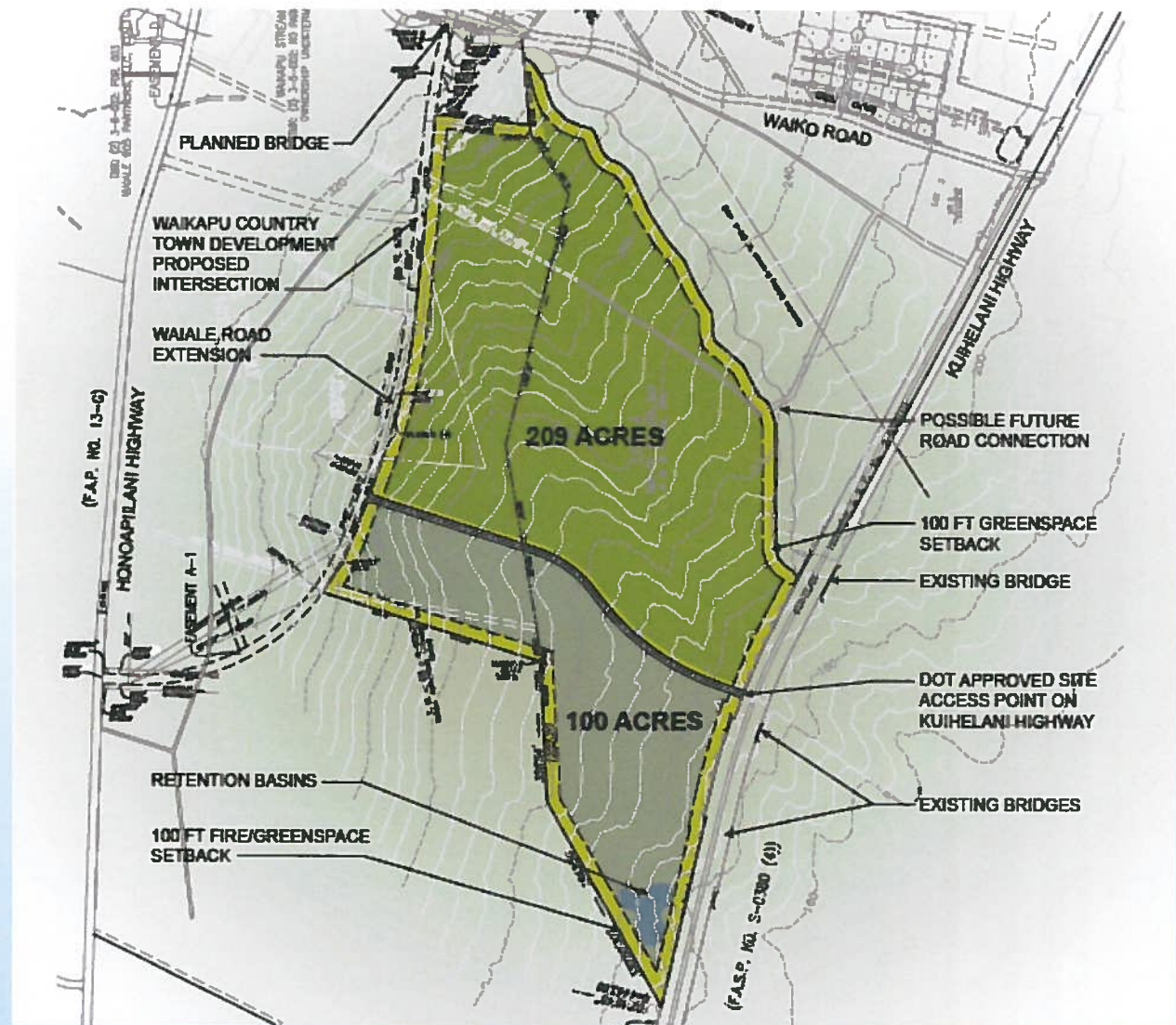
Possibilities for Central Maui

The future development of County owned land in Waikapu

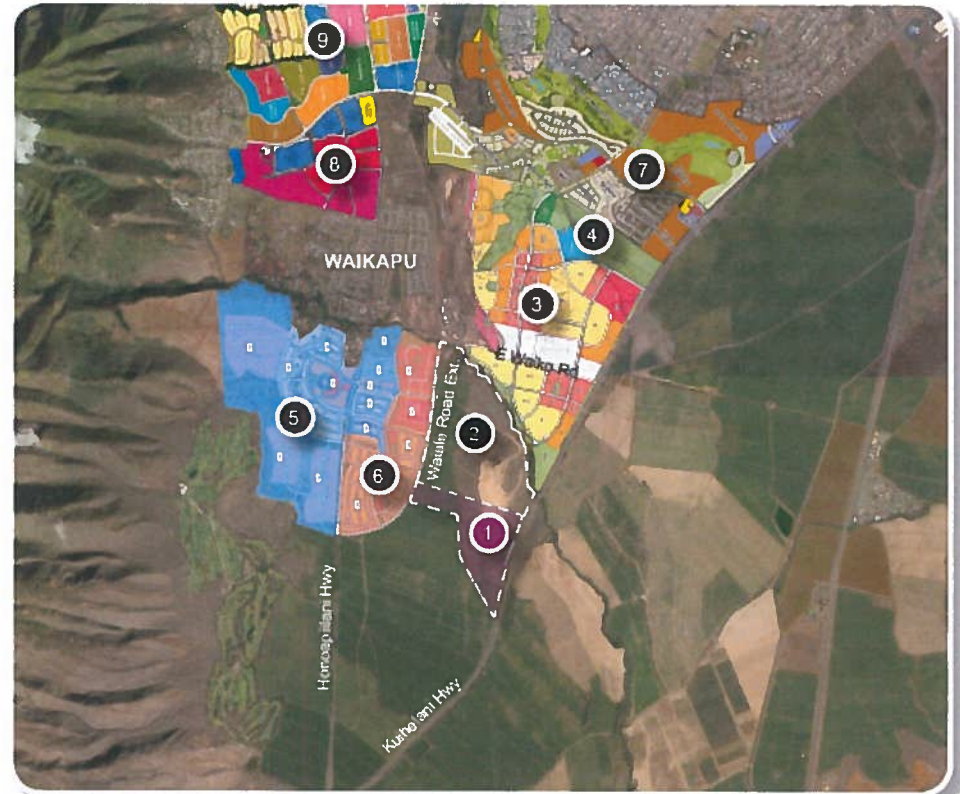
RECEIVED AT BF MEETING ON 09/13/16
Budget Director

Existing Parcels





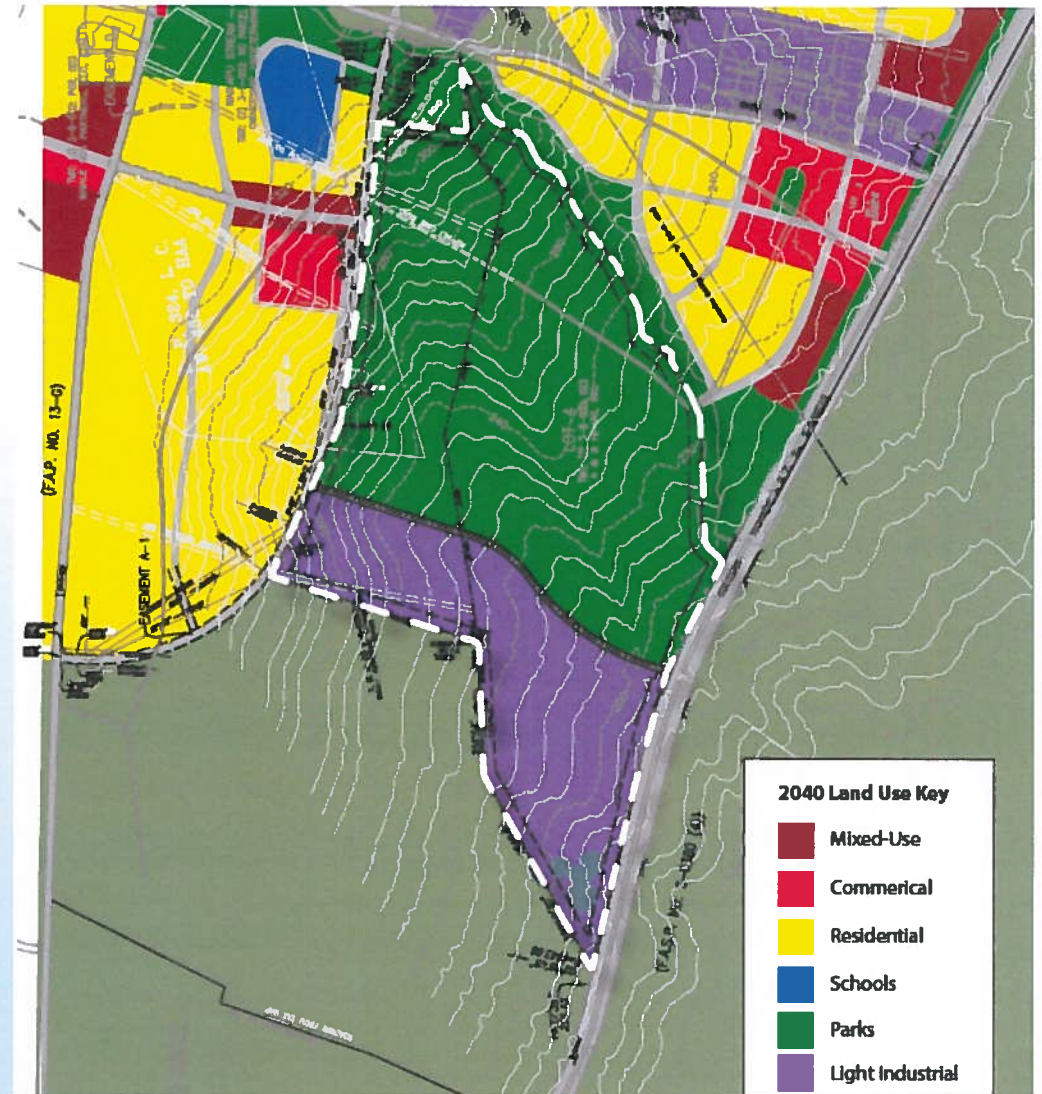
Planned Developments

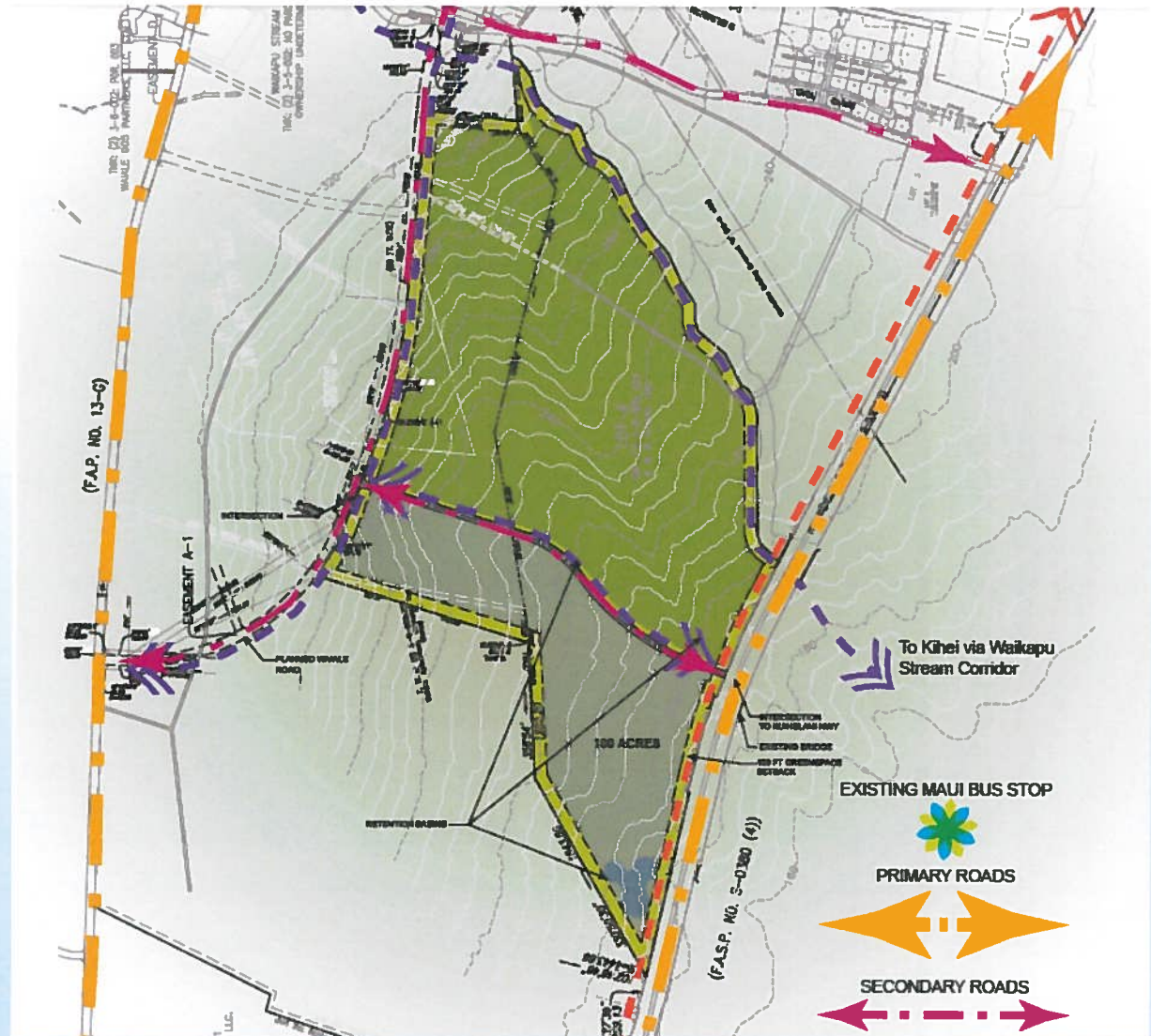


Planned Developments Legend

- | | | | |
|---|--|---|--|
| 1 | 100 acres recommended for Base Yard | 6 | Waikapu Country Town Master Plan 2026-2036 |
| 2 | 209 acres for Parks and Recreation | 7 | Maui Lani |
| 3 | Waiʻale Mixed Use Community Master Plan | 8 | Puʻunani |
| 4 | Planned Central Maui Sports Complex | 9 | Kehalani |
| 5 | Waikapu Country Town Master Plan 2016-2026 | | |

Planned Land Uses





Consolidated Base Yard Possible Preliminary Site Plan

Plan being revised
to include Future
Public Transit Base Yard





Consolidated Base Yard Vision

- The County has a vision to create a single, consolidated base yard that co-locates departments and their facilities within a designated 100 acre industrial park.
- Admin & Support Services (Consolidated) (Document Storage)
- Emergency Management Center (CDA)
- Vehicle Maintenance (Consolidated)
- Warehouse (Consolidated)
- Department Yards (DWS, DPW, DEM, DPR)
- MFD Suite (Vehicle Maintenance, Warehouse, Yard, Admin. Office)
- Waikapu Fire Station