

November 18, 2016

MEMO TO: Members of the Council

F R O M: Mike White, Council Chair

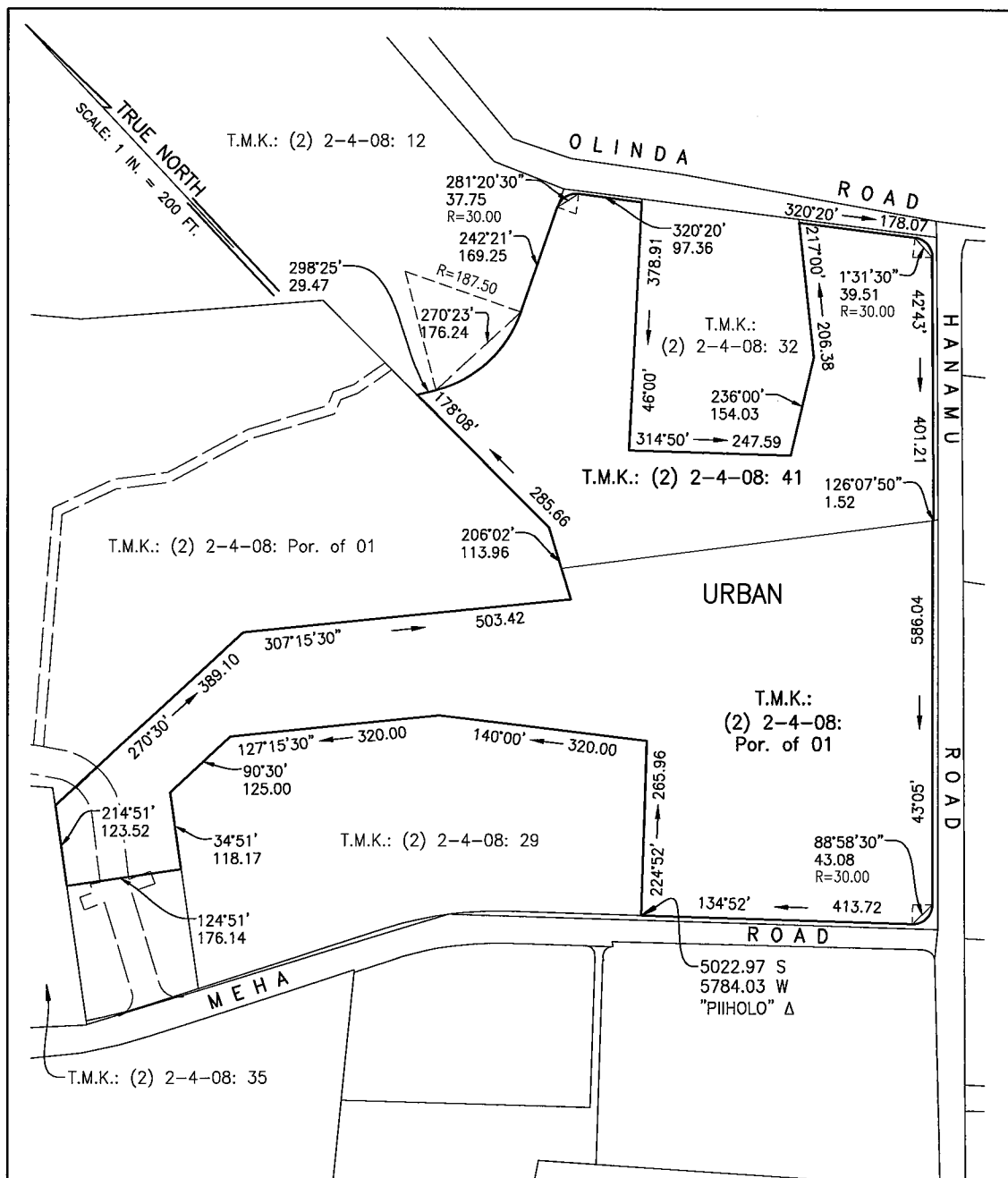


SUBJECT: **DOCUMENT TRANSMITTAL** (PAF 16-176; CC 16-296)

Please consider the attached documents in connection with County Communication 16-296 on today's Council agenda.

paf:cmn:16-176g

Attachments



LAND:
T.M.K.: (2) 2-4-08 : 41 & POR. OF 01

AREA:
TOTAL AREA: 14.950 ACRES

LAND USE DISTRICT BOUNDARY AMENDMENT MAP NO.

MAKAWAO, MAUI

FROM: AGRICULTURAL DISTRICT
TO: URBAN DISTRICT

APPROVAL:

County Clerk

APPROVAL:

Planning Director

PUBLIC HEARING DATE:

ADOPTED BY COUNTY COUNCIL:

ADOPTED BY MAYOR:

ORDINANCE NO.:

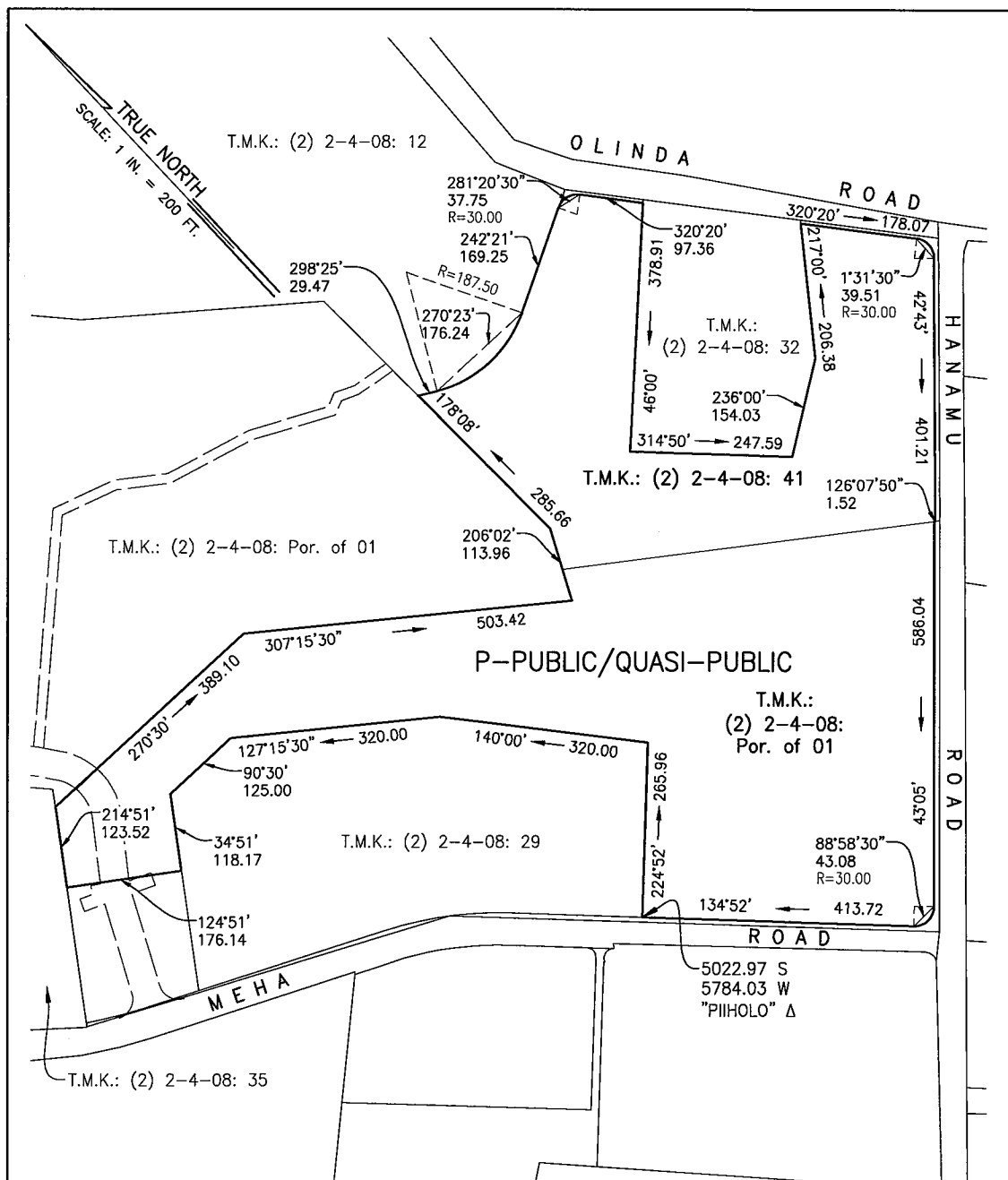
DATE:

SCALE: 1" = 200'

OFFICE OF THE COUNTY CLERK

200 SO. HIGH ST., WAILUKU, MAUI, HAWAII, 96793

DB-



LAND:

T.M.K.: (2) 2-4-08 : 41 & POR. OF 01

AREA:

TOTAL AREA: 14.950 ACRES

COMMUNITY PLAN MAP NO.

COMMUNITY PLAN AMENDMENT - MAKAWAO, MAUI
FROM AGRICULTURE TO P-PUBLIC/QUASI-PUBLIC

APPROVAL:

County Clerk

APPROVAL:

Planning Director

PUBLIC HEARING DATE: 4-10-96

ADOPTED BY COUNTY COUNCIL:

ADOPTED BY MAYOR:

ORDINANCE NO.:

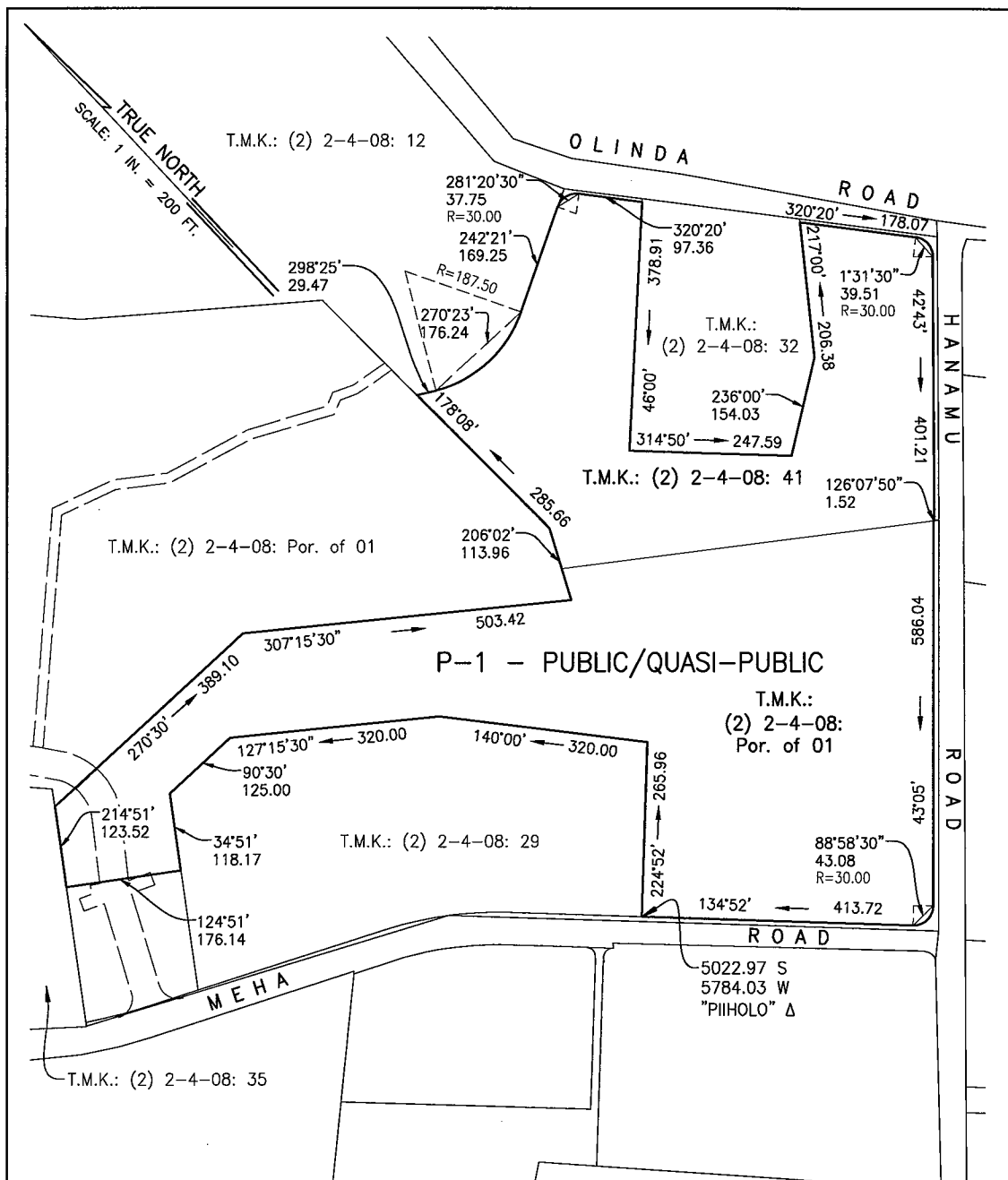
DATE:

SCALE: 1" = 200'

OFFICE OF THE COUNTY CLERK

200 SO. HIGH ST., WAILUKU, MAUI, HAWAII, 96793

CP-



LAND:

T.M.K.: (2) 2-4-08 : 41 & POR. OF 01

AREA:

TOTAL AREA: 14.950 ACRES

LAND ZONING MAP NO.

CHANGE IN ZONING - MAKAWAO, MAUI
FROM AGRICULTURE TO P-1 PUBLIC/QUASI-PUBLIC DISTRICT

APPROVAL:

County Clerk

APPROVAL:

Planning Director

PUBLIC HEARING DATE:

ADOPTED BY COUNTY COUNCIL:

ADOPTED BY MAYOR:

ORDINANCE NO.:

DATE:

SCALE: 1" = 200'

OFFICE OF THE COUNTY CLERK

200 SO. HIGH ST., WAILUKU, MAUI, HAWAII, 96793

L-