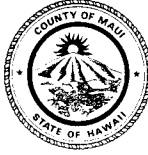


DANNY A. MATEO
County Clerk



RECEIVED
JOSHUA K. NISHITA
Deputy County Clerk

2017 OCT -6 PM 4: 40

OFFICE OF THE COUNTY CLERK **OFFICE OF THE**
COUNTY OF MAUI
200 SOUTH HIGH STREET
WAILUKU, MAUI, HAWAII 96793
www.mauicounty.gov/county/clerk
COUNTY COUNCIL

October 6, 2017

Honorable Elle Cochran, Chair
Infrastructure and Environmental
Management Committee
Council of the County of Maui
Wailuku, Hawaii 96793

Dear Chair Cochran:

Respectfully transmitted are copies of the following communications that were referred to your Committee by the Council of the County of Maui at its meeting of October 6, 2017:

COUNTY COMMUNICATIONS:

- No. 17-383 - Danilo F. Agsalog, Director of Finance
- No. 17-384 - Danilo F. Agsalog, Director of Finance
- No. 17-395 - Alike Atay, Councilmember

Respectfully,

A handwritten signature in black ink, appearing to read "Danny A. Mateo", is written over a faint, larger version of the same signature.

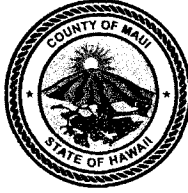
DANNY A. MATEO
County Clerk

/jym

Enclosures

cc: Director of Council Services

ALAN M. ARAKAWA
Mayor



RECEIVED

2017 SEP 21 PM 1:07

DANILO F. AGSALOG
Director

MARK R. WALKER
Deputy Director

COUNTY OF MAUI
DEPARTMENT OF FINANCE
200 S. HIGH STREET
WAILUKU, MAUI, HAWAII 96793

September 21, 2017

RECEIVED
2017 SEP 22 PM 2:32
OFFICE OF THE
COUNTY CLERK

Honorable Alan Arakawa
Mayor, County of Maui
200 South High Street
Wailuku, Hawaii 96793

For Transmittal to:

Honorable Michael White, Chair
And Members of the Maui County Council
200 South High Street
Wailuku, Hawaii 96793

Alan Arakawa 9/21/17

Dear Chair White and Maui County Council Members:

**SUBJECT: KUALONO SUBDIVISION
WATERLINE EASEMENTS W-2, W-3, W-4 & W-5
SUBDIVISION FILE NO. 2.2896
TMK: (2) 2-3-011:124, 125, 126, 127, 128, 129, & 130**

Pursuant to Section 3.44.015 H. of the Maui County Code, this letter shall serve as notice that the County of Maui has accepted the Waterline Easement by the Department of Water Supply – Engineering Division. The parcel is identified by the subject Tax Map Key Numbers.

Please refer to enclosed Exhibit A for the Legal Description of the Easement Areas and to Exhibit B for location of Easement Areas.

In addition, the Department of Water Supply has provided additional information pursuant to Section 3.44.015, F.2 of the Maui County Code.

- 1) **County Funds**: No County Funds used.

COUNTY COMMUNICATION NO. 17-383

Waterline Easements W-2 thru W-5
TMK: (2) 2-3-011:124 through 130
September 21, 2017
Page 2

- 2) **Purpose**: Access to water meters and for waterline purposes, including other equipment and appurtenances necessary or expedient for the proper maintenance, operation or repair of such water meter(s) or pipelines installed within said easement in connection with the construction of the KUALONO SUBDIVISION, SD Project No. 05-038.
- 3) **Conformance**: Easement location and width is acceptable to the Department of Water Supply and is in conformance with County standards.

Thank you for your attention in this matter. Should you have any questions, please feel free to contact me at Ext. 7475.

Sincerely,



for **DANILO F. AGSALOG**
Director of Finance

Enclosures

Cc: Dave Taylor, Director, Department of Water Supply

DFA/gmh

EXHIBIT A

Kualono Subdivision Description of Easements W-2, W-3, W-4 and W-5

Easement W-2 for waterline purposes as shown on File Plan Number 2488, filed in the Bureau of Conveyances of the State of Hawaii (the "Bureau"), being all of LOT 51 of the "KUALONO SUBDIVISION", as shown on File Plan Number 2488, filed in the Bureau, and containing approximately 77,887 square feet.

Easement W-3 for waterline purposes as shown on File Plan Number 2488, filed in the Bureau, being all of LOTS 52, 53, 54 and 55 of the "KUALONO SUBDIVISION", as shown on File Plan Number 2488, filed in the Bureau, and containing approximately 82,581 square feet.

Easement W-4 for waterline purposes as shown on File Plan Number 2488, filed in the Bureau, being all of LOT 56 of the "KUALONO SUBDIVISION", as shown on File Plan Number 2488, filed in the Bureau, and containing approximately 3,810 square feet.

Easement W-5 for waterline purposes as shown on File Plan Number 2488, filed in the Bureau, being all of LOT 57 of the "KUALONO SUBDIVISION", as shown on File Plan Number 2488, filed in the Bureau, and containing approximately 1,871 square feet.

V:\Projdata\04PROJ\04004.10 Kualono (Rev Set)\dwg2004\exhibit\exp-easements-00.dwg

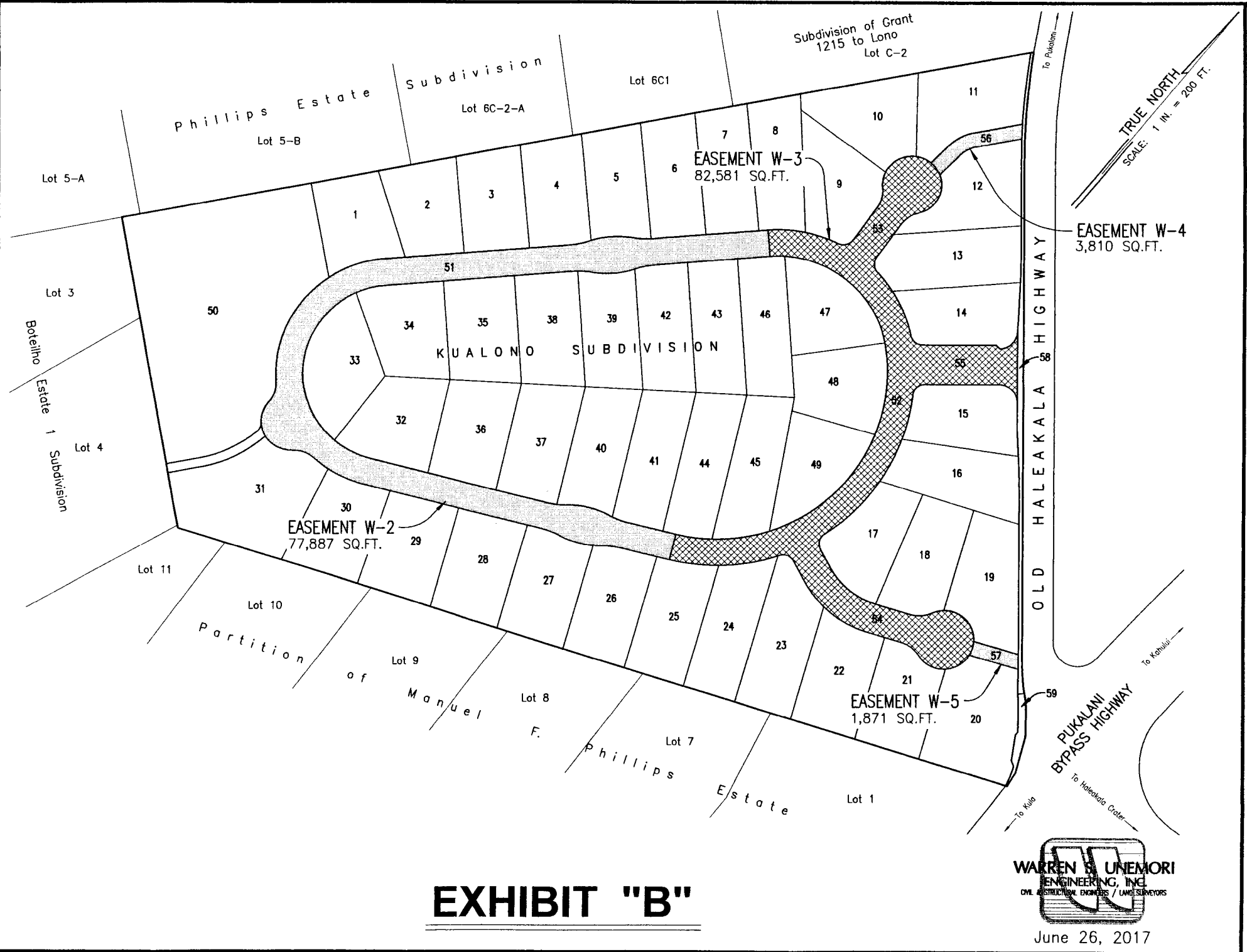
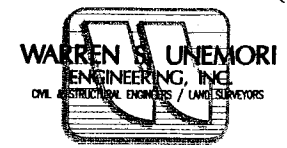


EXHIBIT "B"



WARREN S. UNEMORI
ENGINEERING, INC.
CIVIL ENGINEER / LAND SURVEYOR

June 26, 2017