



Maui Police Department Overview

FEBRUARY 26, 2019

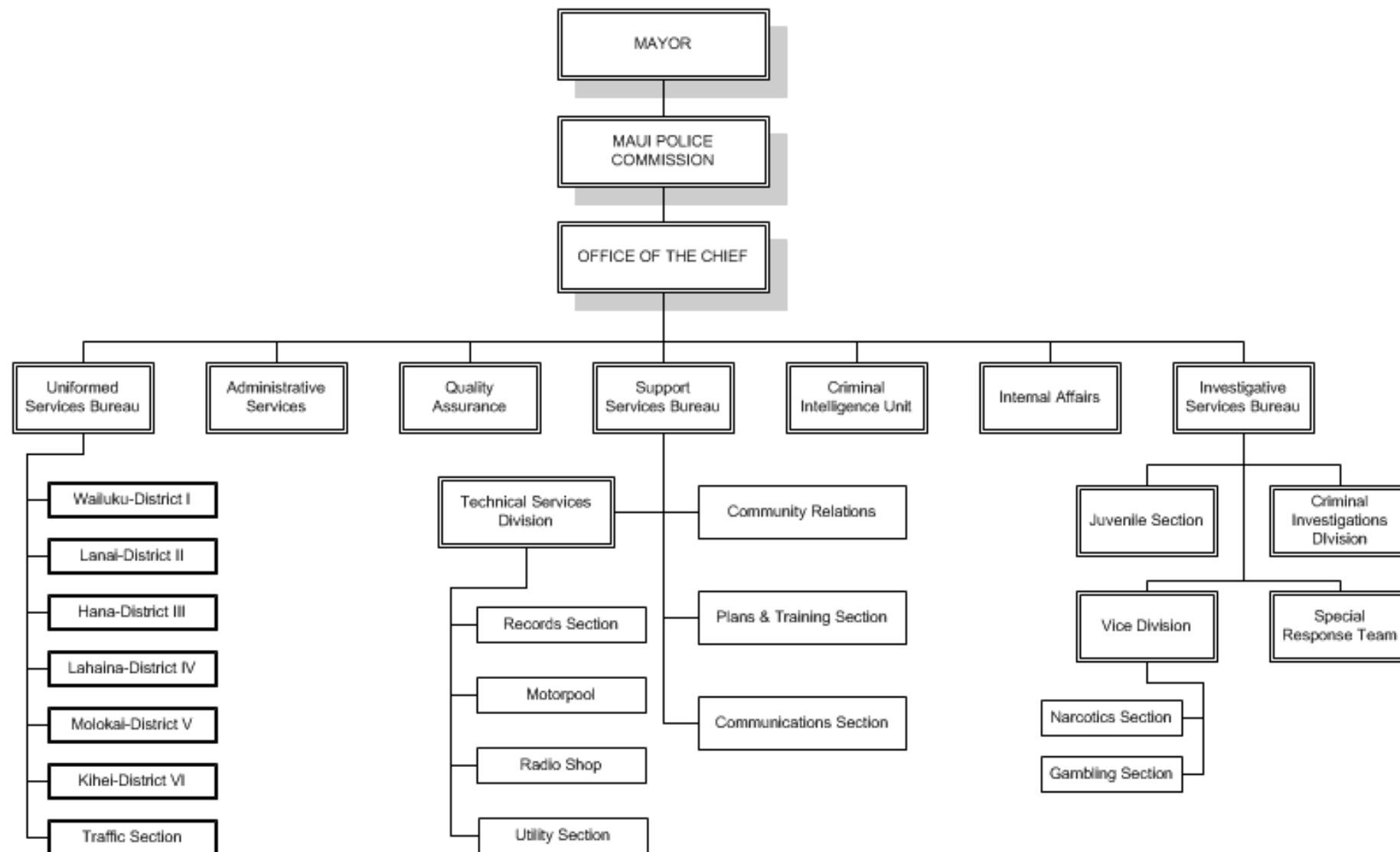
Mission

The purpose of the Maui Police Department is to ensure a safe community through the:

- preservation of public and domestic peace
- prevention of crime
- detection and arrest of offenders of the law
- protection of personal and property rights
- enforcement of all federal and state laws and county ordinances



Organizational Structure



CHAIR
Randol Leach
Term expires 3/31/22

VICE CHAIR
Nora Kawasaki
Term expires 3/31/19

COMMISSIONER
Roger Dixon
Term expires 3/31/23

COMMISSIONER
Lawrence Feinberg
Term expires 3/31/20

COMMISSIONER
Gwen Ohashi Hiraga
Term expires 3/31/20

COMMISSIONER
Mark Redeker
Term expires 3/31/23

COMMISSIONER
Eugene Santlago
Term expires 3/31/21

COMMISSIONER
Sharen Sylva
Term expires 3/31/21

COMMISSIONER
Roberta Patnode
Term expires 3/31/22

MPD Programs

- Administration
- Investigative Services Bureau
- Uniformed Services Bureau
- Support Services Bureau



Administration

Provides effective overall administration of the Department in the management and direction of its employees and establishes priorities and directs operations toward our mission. Components include:

- Administrative Services Section
- Criminal Intelligence Unit
- Internal Affairs
- Quality Assurance Section



Investigative Services Bureau

ISB consists of five investigative components:

- Juvenile Crime Prevention Division, which investigates crimes involving juveniles and offers youth crime prevention and diversion programs through educational curriculum and counseling opportunities



Investigative Services Bureau

- Criminal Investigation Division or CID, which investigates all major crimes, usually felonies; and the Domestic Violence Unit, which investigates Abuse of Family Household Member offenses and offers professional counseling for children of domestic violence



Investigative Services Bureau

- Vice Division, which investigates narcotic, gambling and morals offenses
- Special Response Team/Career Criminal Unit, whose purpose is to regularly train for critical incidents requiring a tactical response



Uniformed Services Bureau

Plans, directs, and coordinates the operation of all field uniformed patrol units in the prevention of crime, enforcement of federal, state, and county laws, and the apprehension and custody of violators.

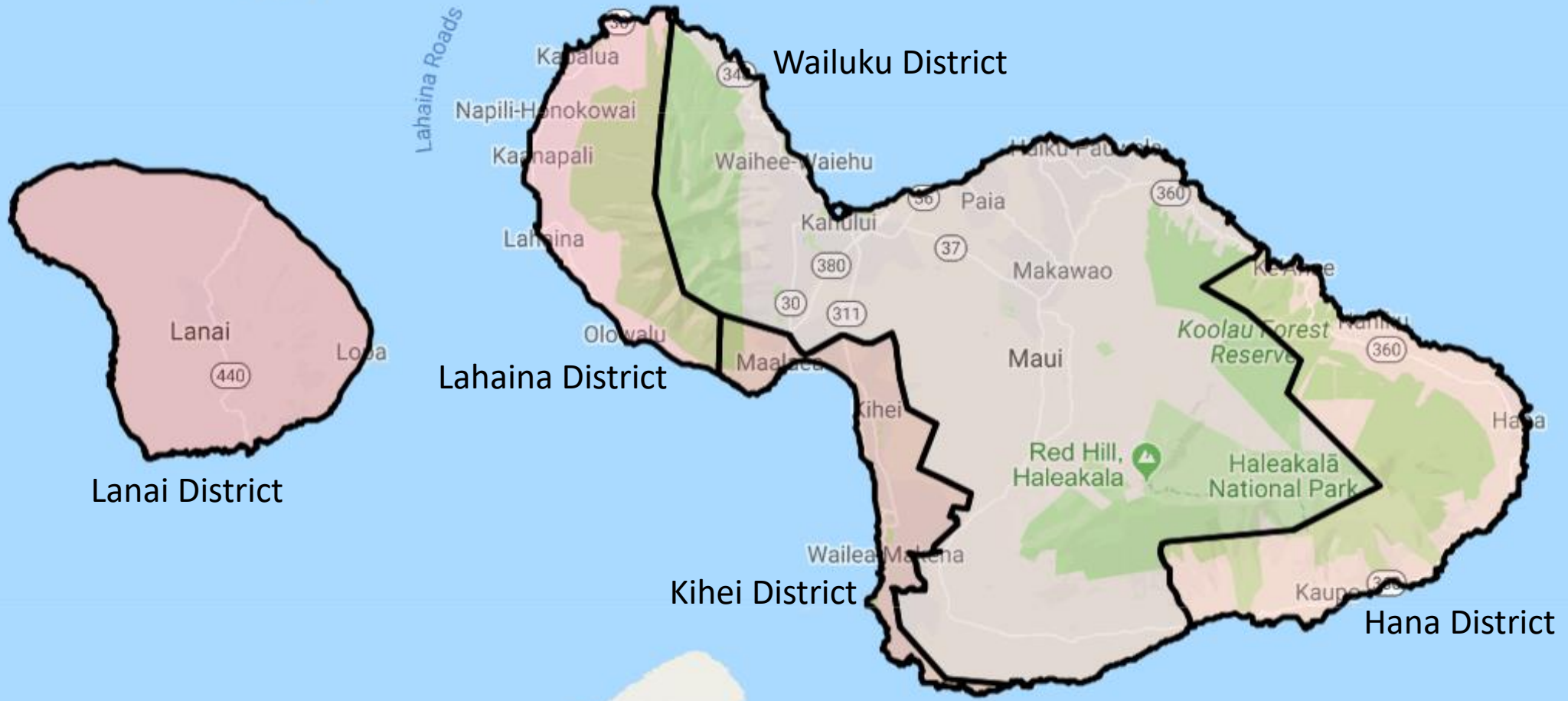
Components include:

- Wailuku District
- Lanai District
- Hana District
- Lahaina District
- Molokai District
- Kihei District
- Traffic Section
- Crime Reduction Unit





Molokai District



Wailuku District

Lahaina District

Kihei District

Hana District

Lanai District



Kaho'olawe

Technical & Support Services Bureau

Plans, directs, and coordinates the clerical, technical and logistical support for the Department

Components include:

- Communications Section
- Plans, Training, Research and Development Section
- Community Relations Section
- Technical Services Section
 - Records
 - Motorpool
 - Radio Shop
 - Building Maintenance



Vacancies for Sworn Personnel

Sworn vacancies & costs associated (based on base annual salary):

(3) Captains

(5) Lieutenants

(12) Sergeants

(35) POII

(5) POI



Vacancies for Civilian Personnel

Dispatchers:

(19) ESDI

(2) SESD

Other Civilian:

(10) vacant positions (various)



Priority CIP Projects for FY18

Lahaina Locker Room

- Betsill Brothers Construction won the bid and construction started on February 4, 2019
- They were given 120 days to complete the project



Priority CIP Projects for FY19

Forensic Facility AC Improvements

- GYA Architects are the consultants for this project
- GYA is working on the design, mechanical engineering, architectural specifications and scope of work
- Once specifications are complete the project will go out to bid



Priority CIP Projects for FY19

Fuel Tank – Wailuku Station

- Currently working on the specifications and scope of work
- Once specifications are complete the project will go out to bid

Ballistic Window for Receiving Desk

- Gathering quotes from Contractors to determine the cost
- If the cost exceeds \$25,000, it will go out to bid

