

**Kahului Lani I
Field Report
May 16, 2019**

Kahului Lani Senior Affordable Rental Phase I

Site Work:

- Grading of parking lot near Kane Street has started.
- Underground storage chambers installation completed.
- Work on underground utilities continues.



1st Floor:

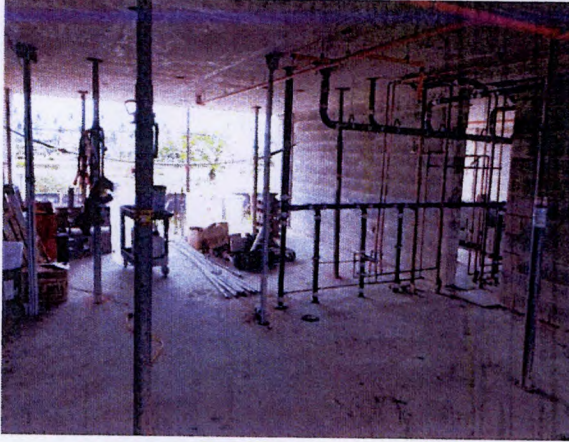
- Exterior CMU walls completed.
- Construction of interior CMU bay and corridor walls continues.
- Installation of utility uprisers continues.
- Stockpiling and CMU fabrication.



RECEIVED AT AH MEETING ON 6/5/19
Catholic Charities Hawaii

2nd & 3rd Floors

- Construction of exterior CMU walls has started.
- Installation of utility uprisers continues.



4th Floor

- Flying deck being moved to 5th floor.



5th Floor

- Construction of the interior CMU bay walls has started.
- Stockpiling and CMU fabrication.



6th Floor (building is 6 floors)

- Form and rebar installation has started on the School Avenue side of the building.



From Vevau Street facing School Avenue.



From Vevau Street facing Kane Street. Queen Kaahumanu Center to the right.



View of Kahului Lani I from W. Kamehameha Ave.

