

PSLU Committee

From: WeTransfer <noreply@wetransfer.com>
Sent: Tuesday, October 01, 2019 8:27 AM
To: PSLU Committee
Subject: jennifer.maydan@mauicounty.gov sent you files via WeTransfer



jennifer.maydan@mauicounty.gov
sent you some files

1 item, 24.3 MB in total • Will be deleted on 8 October, 2019

Aloha Chair Paltin,
Here is the Planning Department's presentation for PSLU-1(4).
Mahalo,
Jen Maydan

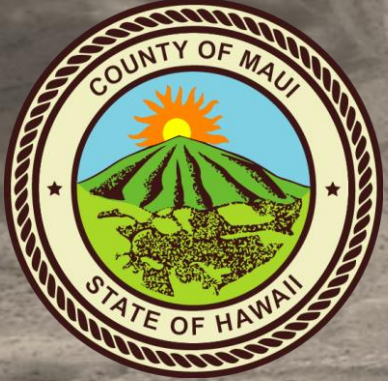
Get your files

Download link

<https://wetransfer.com/downloads/350c42a380eb83f7a74920246a2b361020191001182526/625339de6b999780488a55a20e5b0ad920191001182526/955ec3>

1 item

CC Presentation-090219.pptx
24.3 MB



we are

WEST MAUI | COUNTY OF MAUI
PLANNING FOR THE FUTURE | DEPARTMENT OF PLANNING

West Maui Community Plan

SEPTEMBER 2, 2019 | PLANNING & SUSTAINABLE LAND USE COMMITTEE

Overview

- Community Plan Update Process
- Draft West Maui Community Plan
- Community Plan Advisory Committee (CPAC)
- Next Steps

Maui County General Plan

COUNTYWIDE POLICY PLAN

MAUI ISLAND PLAN

COMMUNITY PLANS

we are

West Maui

South Maui

Central Maui

Upcountry

North Shore

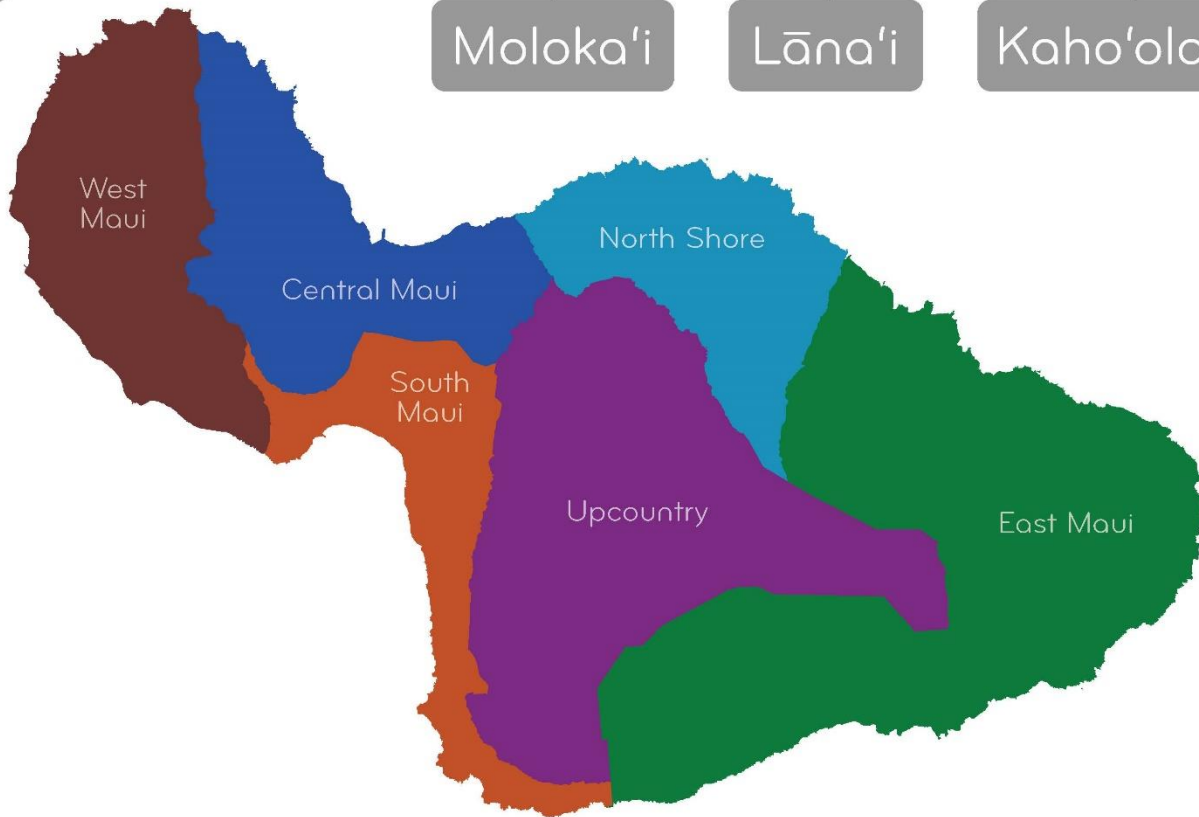
East Maui

COMMUNITY/ISLAND PLANS

Moloka'i

Lāna'i

Kaho'olawe



What do Community Plans do?

Community Plans

- *Land Use*
- *Development Character*
- *Implementation*



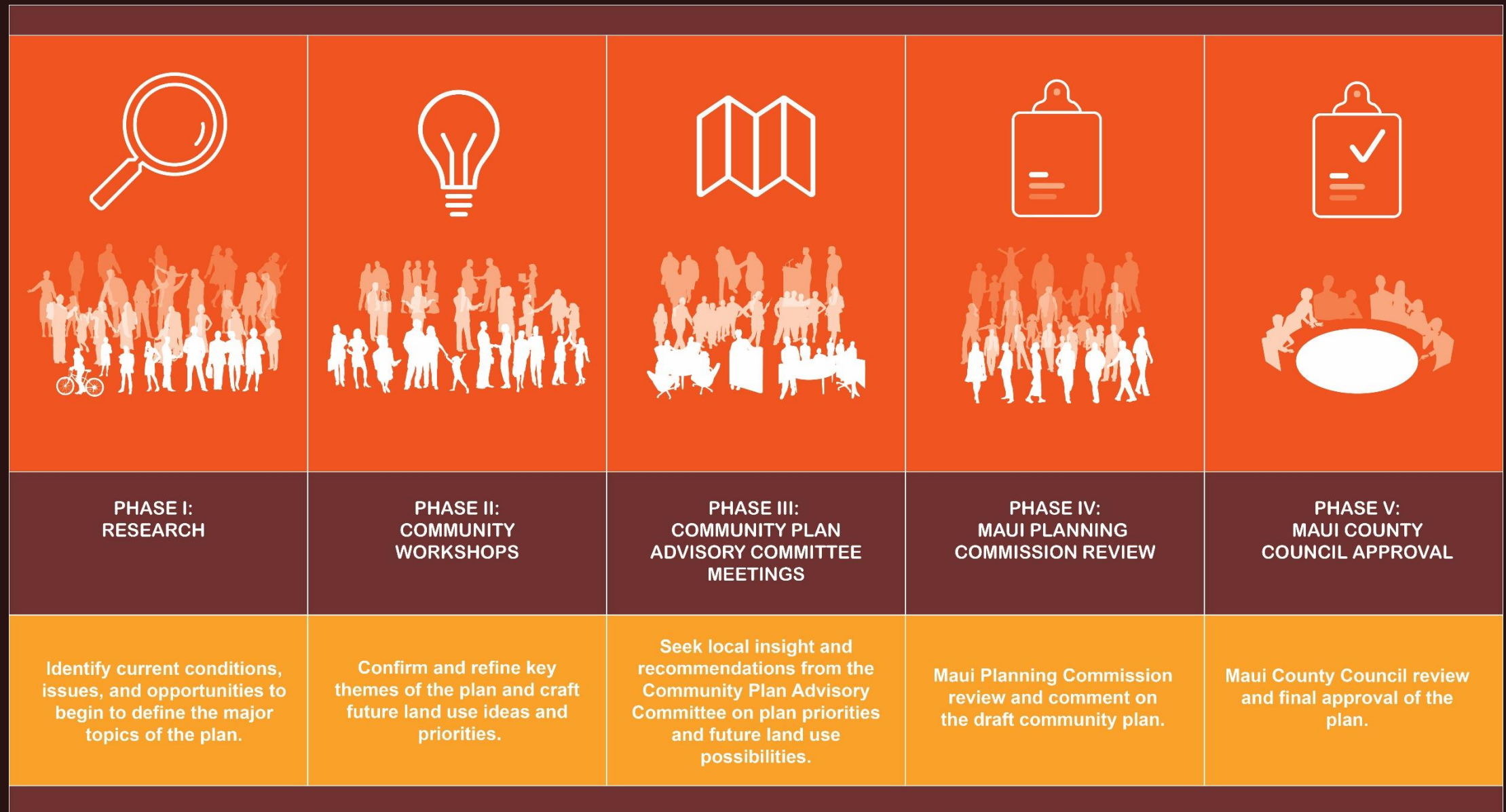
WEST MAUI COMMUNITY PLAN UPDATE

Maui County Planning Department Draft | July 2019

Prepared for: West Maui Community Plan Advisory Committee



Community Plan Update Process



Technical Resource Papers



Community
Profile



Climate
Change and
Sea Level Rise



Wastewater



Water



Historic
Preservation



Recreation
Network



Land Use



Economic
Prosperity



Housing



Drainage and
Stormwater

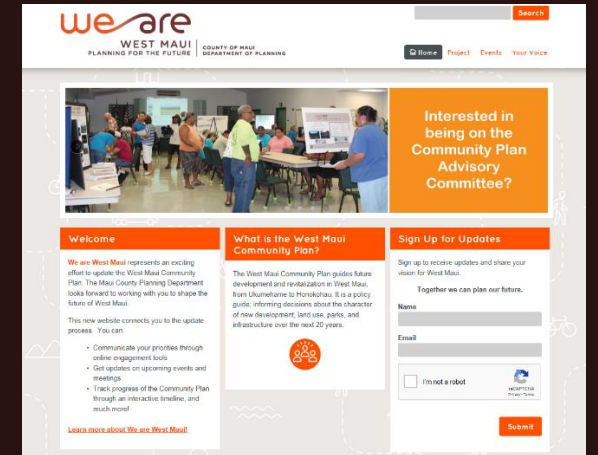


Mobility

Community Engagement Goals

- Engage the community early and often.
- Provide many diverse options to participate and bring the process to the community.
- Provide transparency and better understanding of the community plan update process.

“Slow is smooth and smooth is fast.”



COMMUNITY ENGAGEMENT AT A GLANCE



57 public and stakeholder
meetings, workshops,
open houses & online activities

1535 participants

146,974 page
views

15,851
sessions

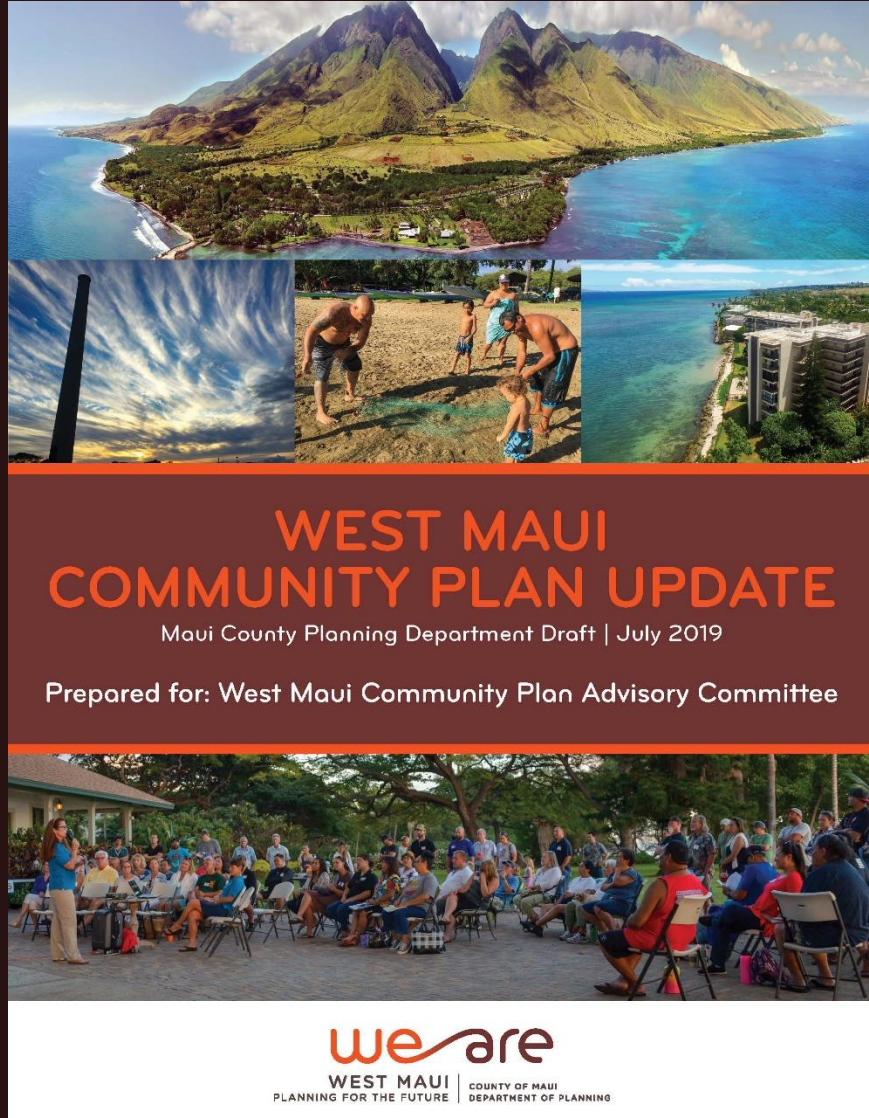


9,548
users



1752 responses to
online questionnaires
and other activities

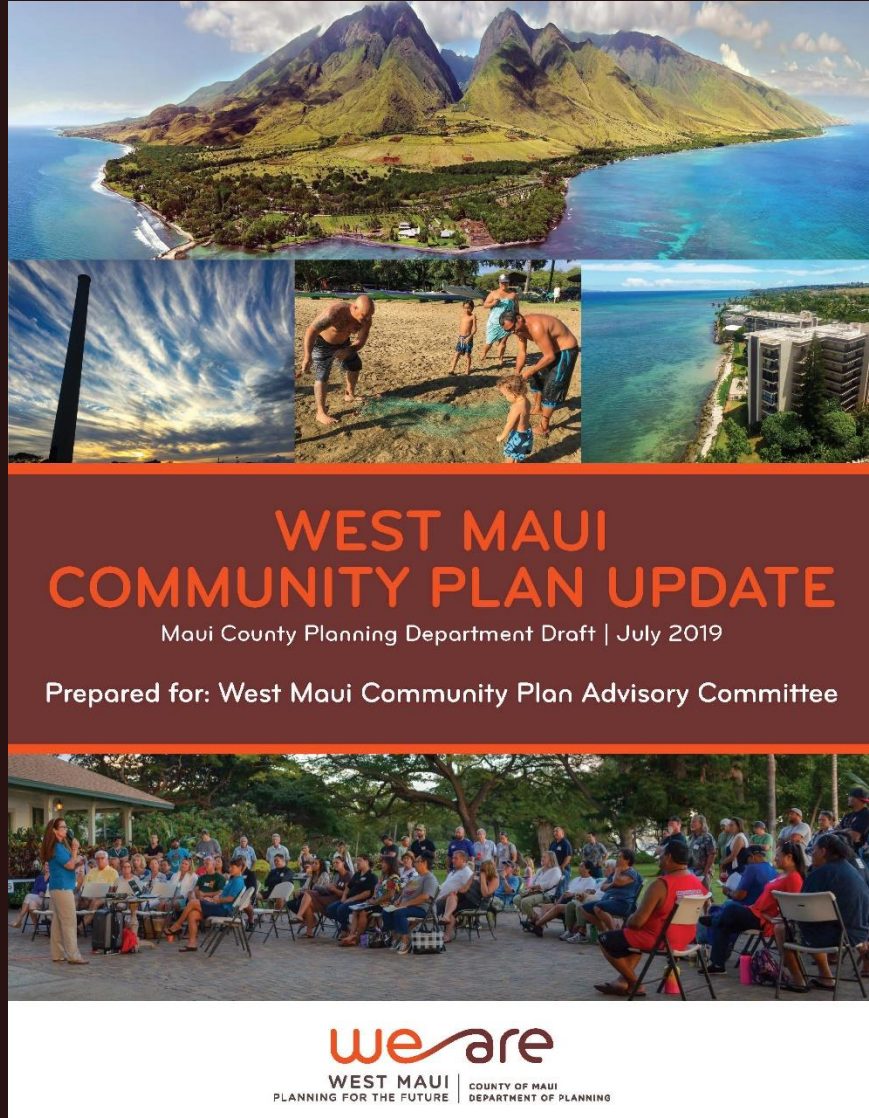
Draft West Maui Community Plan



Update

- 1996 West Maui Community Plan
- Section 2.80B Maui County Code
- Maui Island Plan
- State legislation on sustainability and climate change adaptation
- Community input
- New data and research

Draft West Maui Community Plan



Format and Content

- Section 1: Plan Framework
- Section 2: Policy Framework
- Section 3: Growth Framework
- Section 4: Implementation and Monitoring

Draft West Maui Community Plan



WEST MAUI COMMUNITY PLAN UPDATE

Maui County Planning Department Draft | July 2019

Prepared for: West Maui Community Plan Advisory Committee



weare
WEST MAUI | COUNTY OF MAUI
PLANNING FOR THE FUTURE | DEPARTMENT OF PLANNING

Format and Content

Section 1: Plan Framework

- 1.1 About the West Maui Community Plan
- 1.2 How to Use this Plan
- 1.3 How to Change this Plan
- 1.4 West Maui Yesterday, Today and Tomorrow
 - History*
 - Population Growth*
 - Key Challenges*
 - Vision and Goals*

“West Maui has everything its residents need to thrive, including a range of affordable housing options, community services, a diversified economy with family-wage jobs, and ample access to open spaces and parks, mauka to makai. Conscious of the region’s rich cultural heritage, care is taken to protect and restore historic sites and to incorporate traditional Hawaiian practices that made the island sustainable for generations. Visitors are welcomed with Aloha, and everyone enjoys an active lifestyle with safe walking, biking and public transit routes within and between West Maui’s communities, and a healthy environment with resilient shorelines.”

Draft West Maui Vision Statement

Draft West Maui Community Plan



WEST MAUI COMMUNITY PLAN UPDATE

Maui County Planning Department Draft | July 2019

Prepared for: West Maui Community Plan Advisory Committee

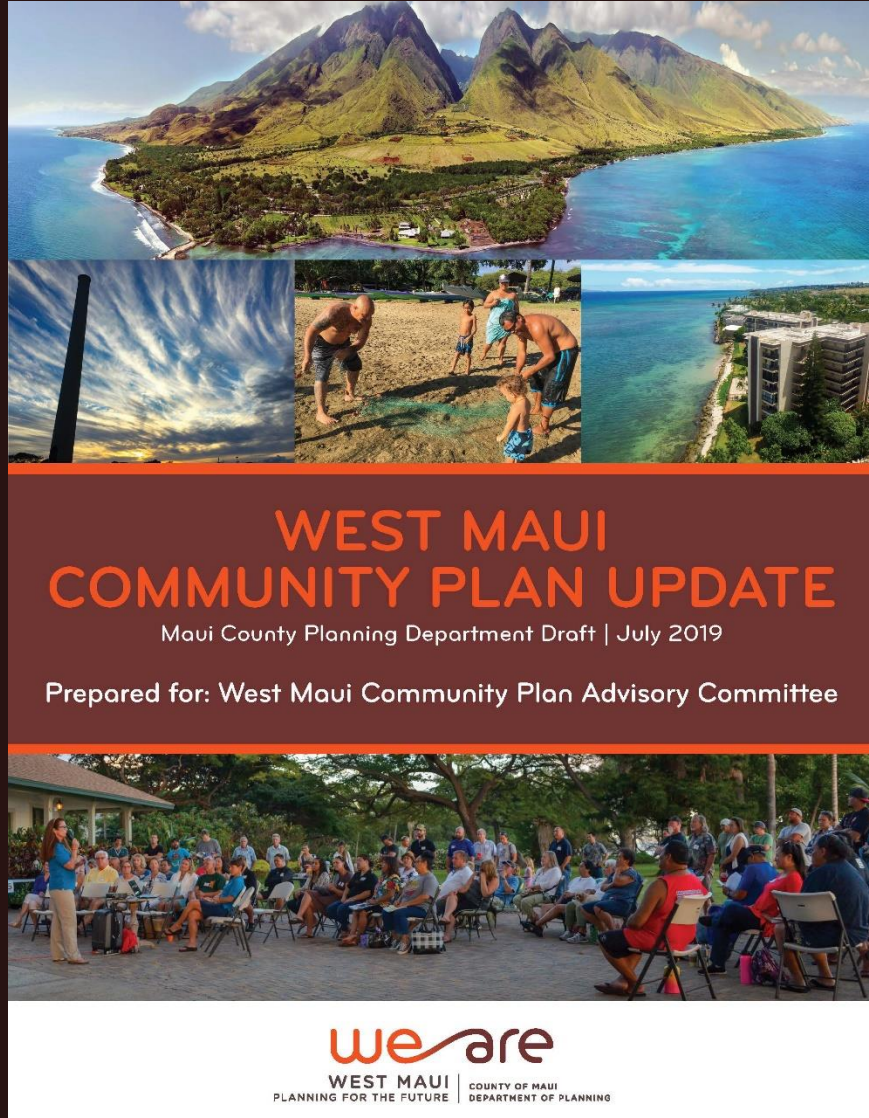


Format and Content

Section 2: Policy Framework

- 2.1 Goal | Ready and resilient systems.
- 2.2 Goal | A complete, balanced, and connected transportation network.
- 2.3 Goal | Responsible stewardship of resources, culture and character.
- 2.4 Goal | Economic opportunity through innovation and collaboration.
- 2.5 Goal | Safe, healthy, livable communities for all.

Draft West Maui Community Plan



Format and Content

Section 3: Growth Framework

3.1 Background

3.2 Growth Plan

3.3 Community Plan Designations

3.4 Community Plan Map

3.5 Subarea Descriptions

3.6 Areas of Change

Comparison of Existing & Updated Designations

State Land Use Districts

Conservation (C)
Agricultural (AG)
Rural (R)
Urban (U)

MIP Growth Boundaries

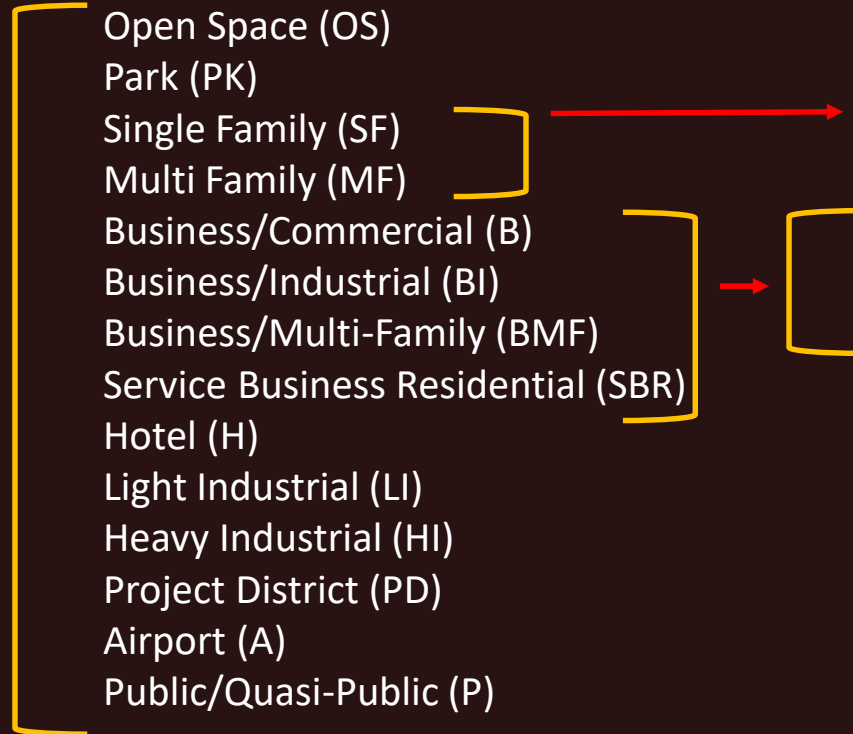
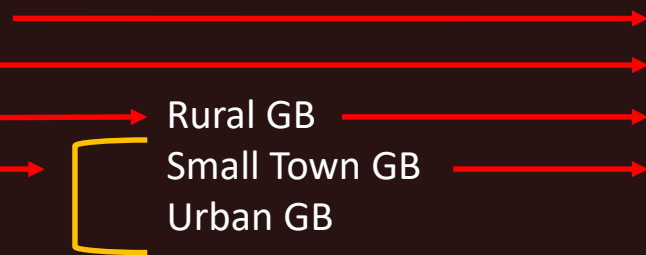
Rural GB
Small Town GB
Urban GB

Existing Land Use Designations

Conservation (C)
Agriculture (AG)
Rural (R)
Open Space (OS)
Park (PK)
Single Family (SF)
Multi Family (MF)
Business/Commercial (B)
Business/Industrial (BI)
Business/Multi-Family (BMF)
Service Business Residential (SBR)
Hotel (H)
Light Industrial (LI)
Heavy Industrial (HI)
Project District (PD)
Airport (A)
Public/Quasi-Public (P)

Updated Land Use Designations

State Conservation (SC)
Agriculture (AG)
Rural (RU)
Park/Open Space (PK/OS)
Residential (RES)
Neighborhood Center (NC)
Small Town Center (STC)
Urban Center/Corridor (UCC)
Resort/Hotel (RH)
Employment Center (EC)
Industrial (IN)
Special Purpose District (SPD)
Public/Quasi-Public (PQP)



Draft West Maui Community Plan



WEST MAUI COMMUNITY PLAN UPDATE

Maui County Planning Department Draft | July 2019

Prepared for: West Maui Community Plan Advisory Committee



Format and Content

Section 4: Implementation and Monitoring

Actions

Implementation Schedule

Monitoring Program

Draft West Maui Community Plan



WEST MAUI COMMUNITY PLAN UPDATE

Maui County Planning Department Draft | July 2019

Prepared for: West Maui Community Plan Advisory Committee



Sections to be Developed with CPAC

Section 2: Policy Framework

★ Policies

Section 3: Growth Framework

★ Community Plan Map

★ Growth Plan Objectives

★ Areas of Change

Section 4: Implementation and Monitoring

★ Actions

Community Plan Advisory Committee (CPAC)



Chair: Kai Nishiki; **Vice Chair:** Jeri Dean; **Members:** Joseph Aquino, Ravi Bugga, Yvette Celiz, Karen Comcowich, Don Gerbig, Dawn Hegger-Nordblum, Aina Kohler, Hans Michel, Dylan Payne, Joe Pluta, and Leilani Pulmano

After CPAC



WEST MAUI COMMUNITY PLAN UPDATE

Maui County Planning Department Draft | July 2019

Prepared for: West Maui Community Plan Advisory Committee

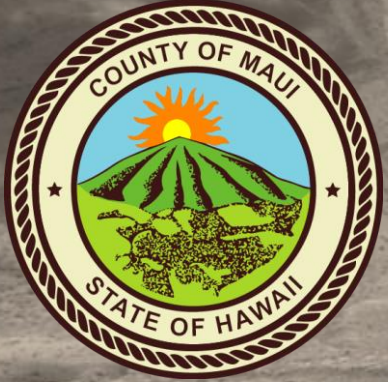


weare
WEST MAUI | COUNTY OF MAUI
PLANNING FOR THE FUTURE | DEPARTMENT OF PLANNING

Planning Commission | Spring 2020

County Council | Fall 2020

Adoption | Fall 2021



we are

WEST MAUI | COUNTY OF MAUI
PLANNING FOR THE FUTURE | DEPARTMENT OF PLANNING

Mahalo!

WEAREWESTMAUI@MAUICOUNTY.GOV

WWW.WEAREMAUI.ORG