

Maui County Department of Housing and Human Concerns

*"To support and enhance the social well-being
of the citizens of Maui County"*

DHHC PROGRAMS

- Administration Program
- **Housing Program**
- Human Concerns Programs
 - Early Childhood Resource Center
 - Grants Management Division
 - **Homeless Program Division**
 - Immigrant Services Division
 - Maui County Office on Aging / Aging and Disability Resource Center (MCOA / ADRC)
 - Senior Services Division - Kaunoa
 - Volunteer Center
- Animal Management Program – Maui Humane Society

RECEIVED AT AH MEETING ON 3/11/20

Today's FY2020 Budget Overview

Housing Division

30 total Equivalent Personnel

5 E/P unfunded

Total FY2020 budget = \$40M

Homeless Division

2 total Equivalent Personnel

Total FY2020 budget = \$2.3M

Housing Division

Housing Program Overview

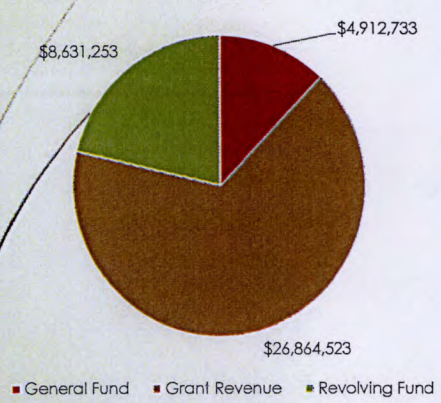
- HOUSING ADMINISTRATION – provides oversight
 - Workforce Housing
 - Fair Housing
 - Affordable Housing Fund (revolving fund)
 - County Grant Funding (general fund)
 - Federal Funding
 - HOME Investment Partnerships Program
 - Housing Trust Fund (HTF)
 - Housing Choice Voucher Program (Section 8)

Housing Budget 2020

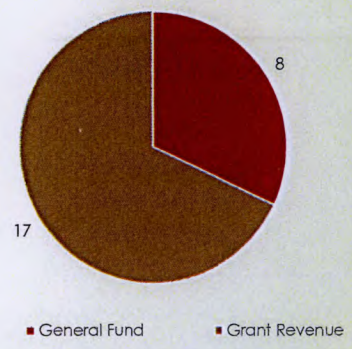
Funding Source	Salaries	Operations	Transfers	Equipmt	Total
County General Fund	\$490,880	\$4,419,443	\$0	\$2,410	\$4,912,733
Grant Funds (Federal/County)	\$901,227	\$24,785,452	\$1,170,800	\$7,044	\$26,864,523
County Revolving Funds	\$0	\$8,631,253	\$0	\$0	\$8,631,253
Program Total	\$1,392,107	\$37,836,148	\$1,170,800	\$9,454	\$40,408,509
Equivalent Personnel (EP) (30 total/5 unfunded)	25 funded				

Housing Division: FY2020 Budget and Personnel

Budget by Funding Source - \$40M Total



Personnel by Funding Source - 25 E/P
(30 total/5 unfunded)



Housing Administration

Housing Administration Budget 2020 (not including HCV Program)

Funding Source	Salaries	Operations	Equipmt	Total
General Fund	\$490,880	\$4,419,443	\$2,410	\$4,912,733
Grant Funds (County)	\$0	\$736,000	\$0	\$736,000
County Revolving Funds	\$0	\$8,631,253	\$0	\$8,631,253
Program Total	\$490,880	\$13,786,696	\$2,410	\$14,279,986
Equivalent Personnel (EP)	8			

Housing Administration Operations - General Fund FY2020

Expense	Total
Materials/Supplies (office supplies, etc)	\$4,400
Other Costs (dues, publications, training)	\$3,619,150
Services (janitorial, svc contracts, studies)	\$768,090
Travel	\$9,700
Utilities	\$18,103
TOTAL OPERATIONS	\$4,419,443

Housing Administration Operations - General Fund

	2019 Adopted	2020 Adopted	Status	Projection
OTHER COSTS				
Affordable Rental Housing Programs	\$1,000,000	\$1,400,000	98%	On-track
Hale Mahaolu Homeowners Counseling	\$80,000	\$150,000	47%	On-track
First Time Home Buyer's Fund	N/A	\$2,000,000	34%	On-track
SERVICES				
Feasibility Study Papalaua St.	\$0	\$50,000	0%	Unused
A.I./Tree & Lot Maint (\$110K)/Parcel Studies (\$150K)	\$60,000	\$260,000	31%	EOY 50%
Funding for additional parcel studies	\$0	\$450,000	0%	Unused
Experimental Housing Program	\$0	\$1,000,000	0%	RFP Issued

Housing Administration Revolving Fund-Affordable Housing Fund

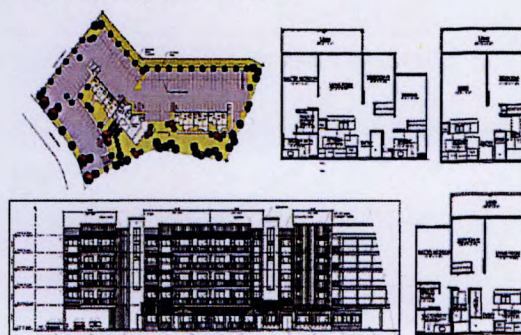
	AMOUNT	STATUS
2019 AFFORDABLE HOUSING PROJECTS		
Hale Mahaolu Ewalu Ph II (22 units)	\$850,000	100% Expended
Hana AH - Habitat for Humanity (25 units)	\$5,000,000	Pending grant agreement
Ka Hale A Ke Ola Renewal Project	\$199,213	25% Complete
Ka Hale A Ke Ola Westside Staircase	\$442,040	In Permitting
Kaiaulu O Kupuohi (89 units)	\$6,382,000	Construction Start – Nov/Dec
FY2019 TOTAL	\$12,873,253	
FY2020	\$14,321,450	2020 Recommendations Submitted

Revolving Fund Projects - Affordable Housing Fund



Hale Mahaolu Ewalu, Pukalani

Kaialau O Kupuohi - 89 units



Housing Administration Operations - Grant Revenue Fund

Character Description	2019 Adopted	2020 Adopted	Change Amount	Change Percent
Wages & Salaries	\$866,624	\$901,227	\$34,603	4.0%
Operations	\$24,056,435	\$24,785,452	\$729,017	3.0%
Transfers Out	\$450,000	\$1,170,800	\$720,800	160.2
Equipment	\$48,240	\$7,044	-\$41,196	-85.4%
Program Total	\$25,421,299	\$26,864,523	\$1,443,224	5.7%
Equivalent Personnel (5 unfunded)	22	22	0	0.0%

Housing Administration / HCV Program Grant Revenue Fund - Grant Sources

Grantee (Housing Program)	FY2019	FY2020
HOME Investment Partnership Program	0	0
National Housing Trust Fund	0	0
Komohana Hale Apartment Program	\$232,425	\$215,000
Kulamalu Hale Apartment Program	\$508,227	\$521,000
Section 8 Housing Program	\$24,680,647	\$25,813,932
TOTAL GRANTS	\$25,421,299	\$26,549,932

Grant Revenue Projects – (in process) HOME and Housing Trust Fund (HTF)



Kaiwahine Village, Kihei

Kahoma Residential, Lahaina



County Projects - UHMC Dorms

- \$5M DURF Grant through HHFDC
 - Renovation of existing structures
 - 12 two-bedroom units
 - 1 community building
 - Planning for increased density
- \$864K Ohana Zone Funding through DHS
 - Operations and Support Services after move-in




UHMC Dorms - Status

Phase I:


- Pending final budget amendment (3/13)
 - Contracts for architect/contractors being drafted
- Construction start expected July 1
- Construction completion expected Dec 31, 2020:

Phase II:

- RFP for EA/SMA has been published – bids due Mar 15th



Housing Choice Voucher Program (HCV/Section 8)



Housing Choice Voucher Program (Section 8)

- Funded by federal funds from the US Department of Housing and Urban Development (HUD)
- Program is administered locally by the Housing Division
- Rated High Performer by HUD

Housing Choice Voucher Program (Section 8)

- County of Maui Administers:
 - 1464 Housing Choice Vouchers
 - 35 VASH Vouchers (10 new vouchers awarded Feb 1)
- Family Self-Sufficiency Program (28 participants)
- Home Ownership Program (10 participants)

HCV Program Budget / Personnel

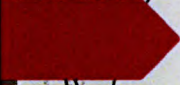
- FY2020 Budget
 - \$25,813,932 (grants)
 - \$302,272 (general funds)
- 22 total Equivalent Personnel (EP)
 - 17 funded / 5 unfunded
 - 1 vacancy which was filled March 9

HCV Program Operations - Grant Revenue Fund


Character Description	2019 Adopted	2020 Adopted	Change Amount	Change Percent
Wages & Salaries	\$866,624	\$901,227	\$34,603	4.0%
Operations	\$23,315,783	\$23,755,661	\$439,878	1.9%
Transfers Out	\$450,000	\$1,150,000	\$700,000	155.5%
Equipment	\$48,240	\$7,044	-\$41,196	-85.4%
Program Total	\$24,680,647	\$25,813,932	\$1,133,285	4.6%
County Wide Costs (Fringe-Dept. Finance)	\$302,272	\$302,272	0	0.0%
Equivalent Personnel (5 unfunded)	22	22	0	0.0%

HCV Program – Key Updates

- Recently opened the wait list in January 2020
 - 3,410 new applicants
- Actively calling up applicants from the wait list
 - Remaining 2018 applicants are being called up now
 - Will start calling from the 2020 list as vouchers are available



Homeless Division



Homeless Division Budget / Personnel

- 2 total Equivalent Personnel (EP)
- FY2020 Budget Homeless Programs
 - \$146,494 - Operations
 - 2,184,417 - Grants
 - administered by the Grants Management Division

Expenditures - General Fund

Character Description	2019 Adopted	2020 Adopted	Change Amount	Change Percent
Wages & Salaries	\$136,680	\$134,544	-\$2,136	-1.6%
Operations	\$11,950	\$11,950	0	0%
Equipment	\$0	\$0	0	0%
Program Total	\$148,630	\$146,494	-\$2,136	-1.4%
Equivalent Personnel	2	2	0	0%

Homeless Program - Placements

Coordinated Entry System Placements
(Family Life Ctr, KHAKO)

- 163 single individuals
- 380 individual family household members

Sub-Categories

- 38 were chronically homeless
- 21 veterans
- 17 youth

Homeless Program – Clean Up

Clean-up of Illegal Encampments (on-going process)

- Environmental Threat
- Health and Safety Risk
- Compassionate Action Plan (multi-step program)

Homeless Program – Clean Up

Largest Clean-ups:

- Kanaha Beach Park
- Luakini Parking Lot and Chang's Beach Makena
- Pakele Place/Waiehu River Mouth
- Bridge near Maui Disposal
- Kaulawahine Street, Kahului

Homeless Program – Illegal Encampments



Homeless Program – After



Homeless Program – Illegal Encampments



Homeless Program – Grants

Grants targeting Homeless Programs

- Administered by the Grants Management Division
- Total Approved Budget \$2,184,417

Grants - General Fund

Agency	Description	Amount	Status	Projection
Family Life Center	Case management	\$180,000	58%	On target (incr \$40K)
Family Life Center	Outreach	\$147,000	71%	On target (incr \$7K)
KHAKO Resource Ctr	Ops for 2 shelters/Step-up Program	\$652,000	75%	On target
Legal Aid Society	Legal Svcs (for most vulnerable)	\$75,000	24%	Expect 100% expenditure
Roman Catholic Church HI	St. Theresa – Hale Kau Kau	\$25,000	50%	On target
KHAKO Resource Ctr	Puuhonua: Homeless Respite Ctr	\$200,376	65%	Ops (+ up to \$50k ADA unit)
Lokahi Pacific	Pilot project	\$24,900	0%	New pilot March – est 50%
Maui Arch. Group	UHMC Dorms Assessment	\$89,115	100%	Completed
Chamber of Comm.	Housing Forum	\$1,000	100%	1-time event completed

Grants - General Fund (Line Items)

Description	Amount	Status
Homeless Program - Molokai	\$50,000	Re-soliciting - RFP March 11
Mobile Hygiene Unit Central Maui	\$200,000	Re-soliciting - RFP March 11
Homeless Programs - General	\$250,000	Using these funds for emerging needs programs

