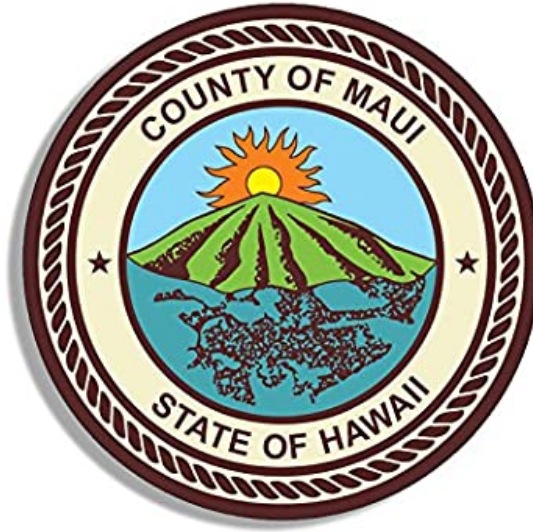


CAR.Committee

From: Juan Rivera <Juan.Rivera@co.maui.hi.us>
Sent: Friday, May 29, 2020 3:08 PM
To: CAR.Committee
Subject: CAR-15 Presentation -- Revised
Attachments: C7010 Kam 1.pdf; C7010 Kam 1.pptx

See attached. Minor corrections made. Additional acknowledgments.

Juan A. Rivera, P.E.
Design and Construction Section
County of Maui, Dept of Environmental Mgt Wastewater Reclamation Division
2200 Main Street, Suite 610
Wailuku, Maui, HI 96793
Office: (808) 270-7268
Mobile/FaceTime: (808) 757-4281



Kam I Beach Park Dune Restoration (Kihei 7 WWPS Erosion Mitigation)

Department of Environmental Management

Planning Department

Department of Management

University of Hawaii Sea Grant Program

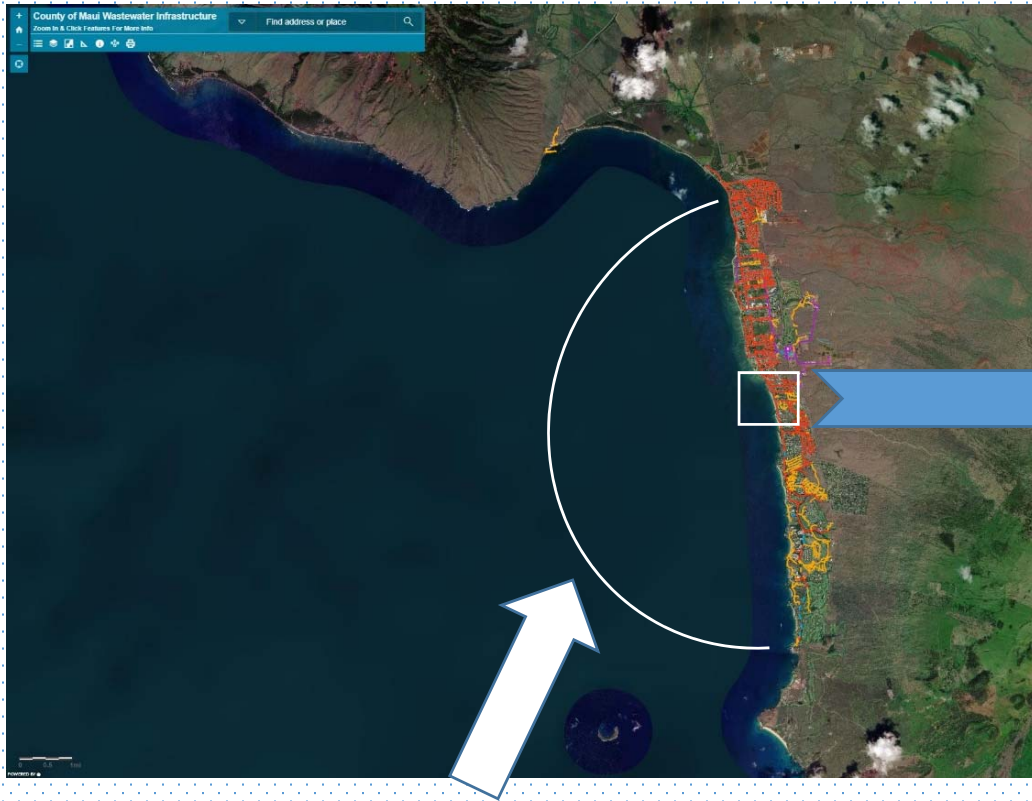
Department of Parks and Recreation

2020

A Cooperative Effort Between Various County Agencies

Agency	Personnel	Task
DEM/Wastewater Reclamation Division	Juan Rivera	Preparation of bid documents and contractor selection
Planning Dept.	Keanu Lau Hee	Permitting and approvals
UH Sea Grant Program	Tara Owens	Technical expert on coastal Processes, liaison/coordinator with County, State and S. Maui Volunteers
Department of Management	Don Couch	Procurement of required permits and construction coordination
Department of Parks and Recreation	Mary Kielty	S. Maui volunteers coordination on dune restoration projects

Background



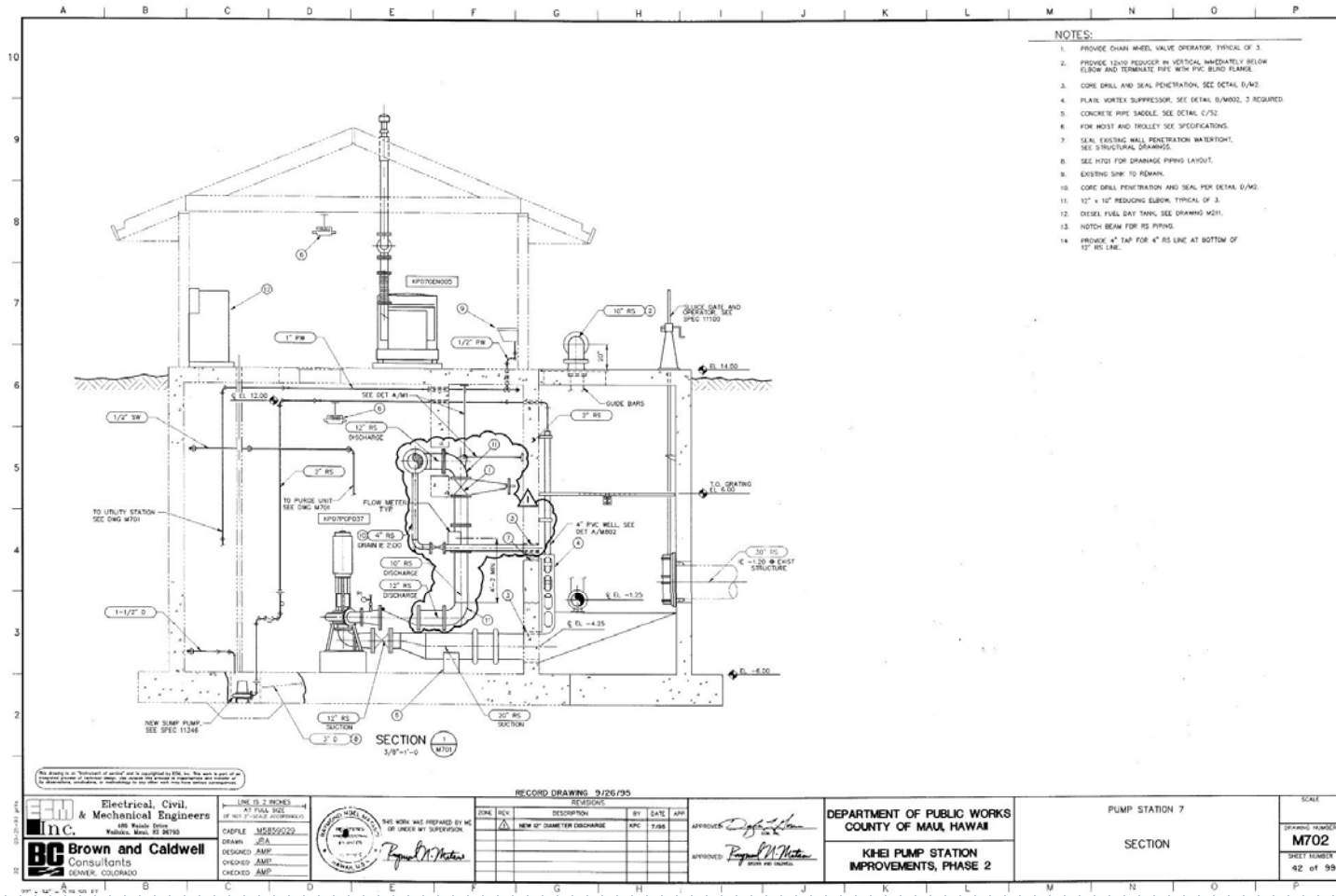
Kihei Wastewater Collection System



Kamaole I Beach Park and
Kihei Wastewater Pump Station No. 7

Kam I Beach Park Dune Restoration
(Kihei 7 WWPS Erosion Mitigation)

BACKGROUND:



- Originally Built in the 1970s
- Major Rehabilitation in 1995
- Collects all sewage from Makena to Alanui Ke Ali'i and pumps to the main pump station (Kihei 6) from which it is pumped to the Kihei WWRF

Kam I Beach Park Dune Restoration
(Kihei 7 WWPS Erosion Mitigation)

Background



Security Fence Damaged



Exposed Foundation

Ongoing shoreline erosion threatens the station.

Six-Year CIP Planning, Wastewater Division

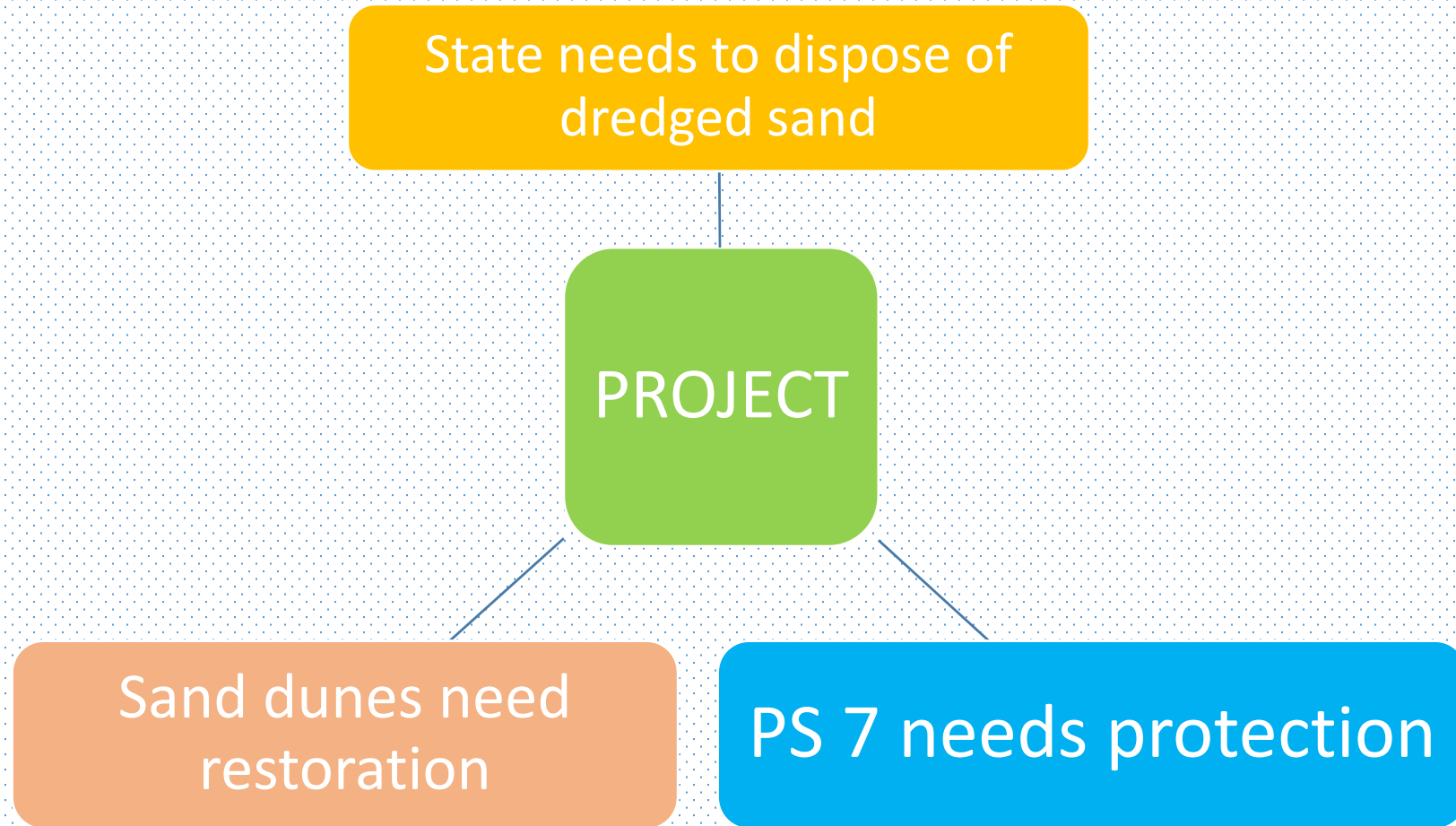
- FY22 – Design of Station Renovations or Relocation
- FY24 – Construction of Renovations or Relocated PS

Temporary Remedial Action

- Sand Nourishment, Dune Restoration

Opportunity

- State DLNR dredges small boat harbor in Kihei
- Convergence of needs



Wastewater Reclamation:

- Plans and specifications
- Pre-bid meeting
- Construction contracting
- Funding \$94K

Preparation of Bid Documents
2019

Permits and Environmental Coordination
2020

Construction
2020

Contactor:
Goodfellow Bros, Inc.
Feb-March 2020

Planning Dept. and Dept. of Management

- Procurement of permits
- Coordinate with State to obtain verification of sand quality before relocation
- Coordinate with volunteers to do sand dune restoration (plants, fencing, etc.)

Construction



Kam I Beach Park Dune Restoration
(Kihei 7 WWPS Erosion Mitigation)

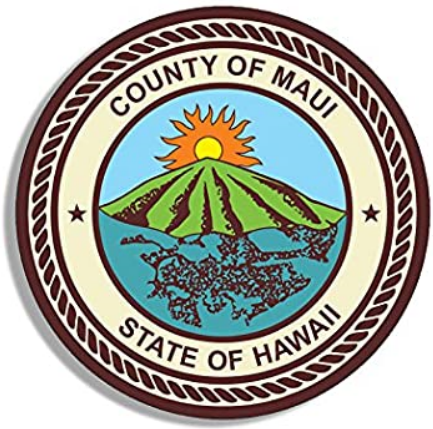
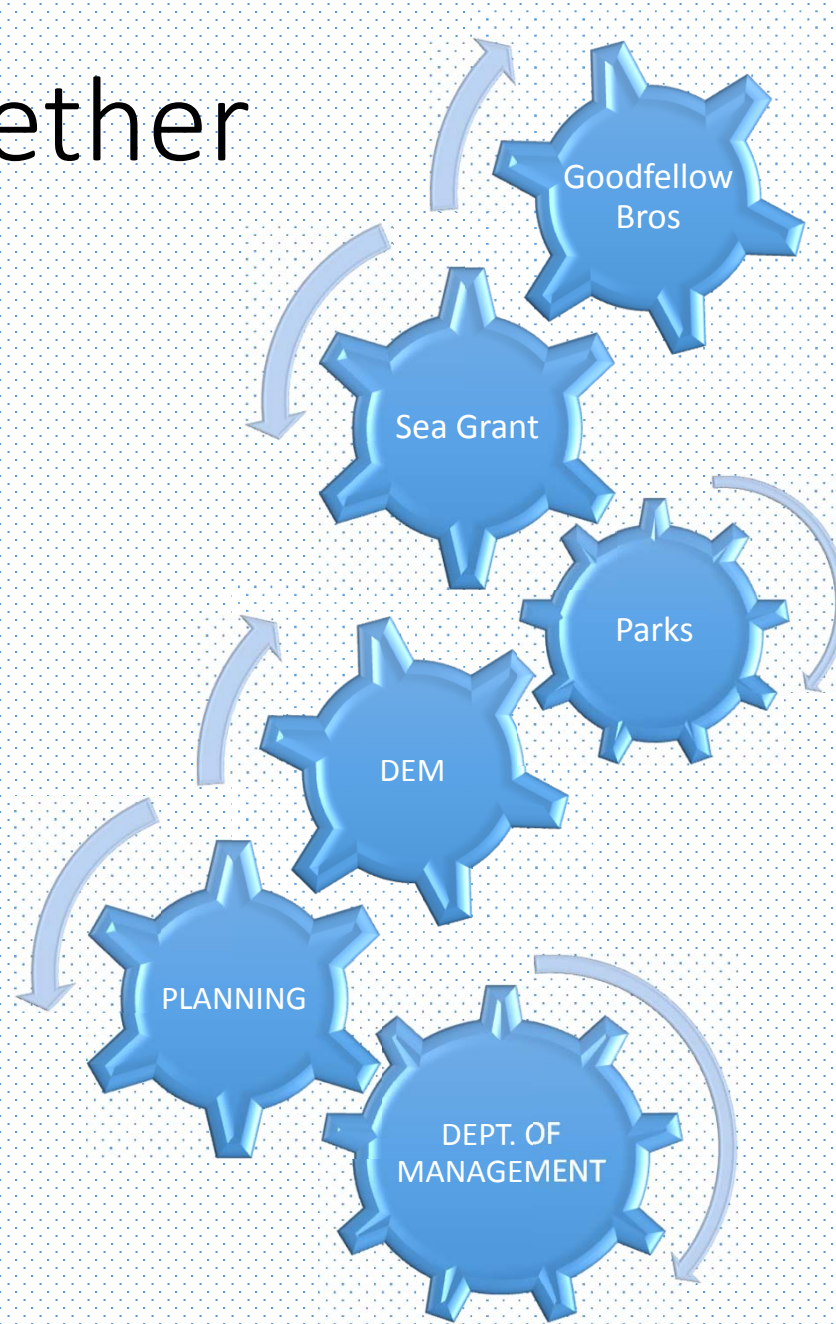
Results

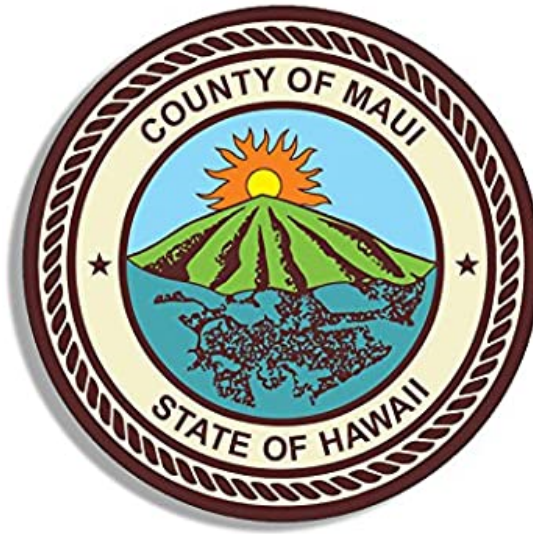
Restored beach. Pump
station protected



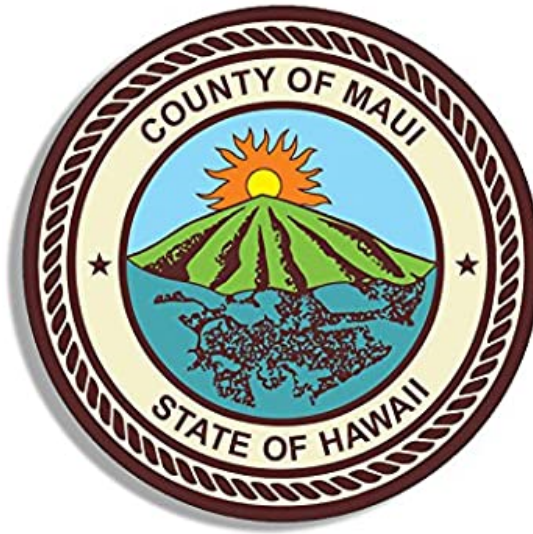
Dunes Restored

Working Together





Questions?



Mahalo!