



knowINK
Innovative Election Solutions

Powering the Nation's Leading

ELECTRONIC POLL BOOK



HFC -31

RECEIVED AT HFC MEETING ON 1/23/20
County Clerk

OUR CUSTOMERS SAY IT BEST...

"the new equipment led to **fewer errors** at the polls and a **quicker process** when auditing results after the election."

- The Advertiser-Tribune

"it reduced wait times between 60 to 75 percent...in one county, they **processed more than 650 voters in one hour,**"

- John Merrill, Alabama Secretary of State

"It made the experience of checking in voters **much easier.**"

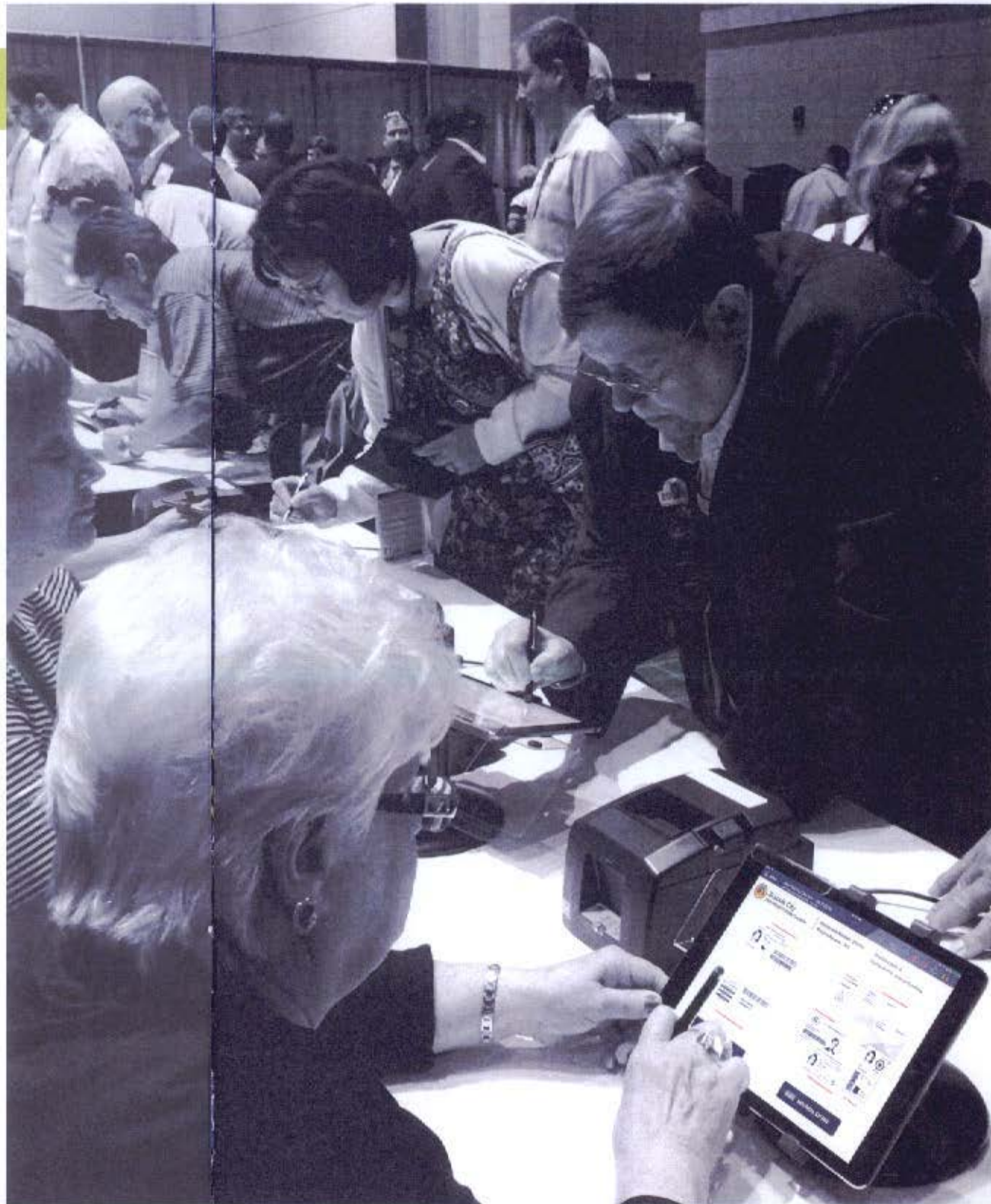
- Poll Worker

"This is a **well written program** that prevents multiple voting by a person."

- Hennepin County, Minnesota

"Poll workers and voters especially appreciated how easy the Poll Pads are to use...it's really a **wow factor.**"

- Nellie Gorbea, Rhode Island Secretary of State



Get to **KNOW**

Us



KNOWiNK provides
a unique approach
and a proven
solution.

KNOWiNK Founder

Scott Leiendecker

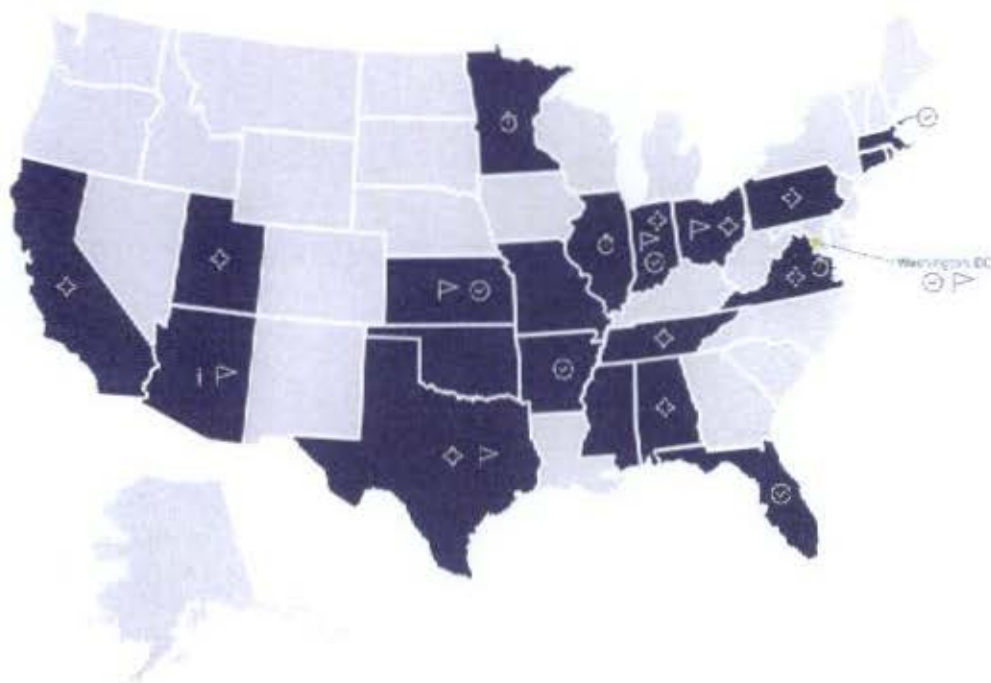
Scott Leiendecker, former St. Louis election director, is one of the nation's leading entrepreneurs in election technology and innovation. Scott founded KNOWiNK in 2011 with the creation of the Poll Pad – transforming the election experience for voters. The Poll Pad provides seamless voter check-in and verification, dramatically reduces wait times for voters, and saves taxpayer money by bringing efficiencies to state and local governments. Scott has grown KNOWiNK into a thriving technology company. KNOWiNK technology is now used in one-third of U.S. states and Washington, D.C.

Founded and operated by former election officials, we know that every election authority is unique.

KNOWiNK provides a proven solution rooted in knowledge gained from our extensive experience as former election officials and from working with and listening to election authorities across the country. Our approach and innovative solution delivers an incomparable and seamless voter check-in and verification process for your election authority.

We are committed to growing with your jurisdiction to meet evolving needs and help achieve your vision to modernize elections with best-in-class technology. Therefore, KNOWiNK is in a perpetual state of development to enhance the overall election experience for voters and everyone involved with running elections. Our top priority is to continue advancing the election process to make voting easier for workers and voters alike.

MILLIONS OF VOTES CAST



20 States
and Washington, D.C.

500+ Election Authorities

27,000+ Units Deployed

State Certified Vote Centers Early Voting Same-Day Registration iBallot NOW



THE NUMBERS

2016 | TOTAL ELECTIONS

January through November: 503



Jan - May
171 Elections



June - Aug
101 Elections



Sept - Nov
231 Elections

Processed on Poll Pad in 2016

8,022,654 voters

Processed on November 8th

5,298,175 voters



ANY LINE, **ANY TIME**, SOLUTION

- Voter Lookup
- Early and Absentee Voting
- Vote Centers
- Same Day Registration
- Provisional Voting
- On-Demand Ballot Printing (iBallot NOW)
- And So Much More!

upgrades to fit your needs

iSync • Encoder • Magstripe Reader • Battery Base • Printer • Wi-Fi Hotspot • Cisco Meraki Router



Comprehensive
Smart Security



Peer-to-Peer
Communication



Built-in
Peripherals



All-In-One
Application



Environmentally
Friendly



Total
Synchronicity

stay
CONNECTED
with the power of
epulse

- Update Voter's Information and Voting Locations
- Send Messages and Alerts
- Live Video Communication
- Monitor Poll Pad Connections, Battery Statuses and More
- Voting Location Opening and Closing Status
- View Turnout and Voter Wait Times



Highly Secure
Hosting



All-In-One
Solution



Real-Time
Insight



Customizable
Reports



Backend
Development



Easily
Operated



iTrack

track all the things you
need to **KNOW**



- Issue Ticketing and Tracking
- Help Desk Administration and Call Logging
- Manage Rover Locations and Ticket Assignments
- View Support Staff Current Location
- Manage Inventory and Supplies
- Monitor and Update Ballot Quantities
- End-to-End Asset Management





Constitutional Amendment
72 of 72 Precincts Reporting



34,644
Voted Yes

8,097
Voted No

[View Full Report >](#)

US Senator
73 of 73 Precincts Reporting



25,129
Mike Steven Kirk (Rep)

18,971
Tammy Duckworth (Dem)

[View Full Report >](#)

Comptroller
73 of 73 Precincts Reporting



25,129
Leslie Mungen (Rep)

15,971
Suzanne Mendez (Dem)

[View Full Report >](#)

President / Vice President

71/73
Precincts Reporting



Precinct	ROCKVILLE
Donald J. Trump (REP)	327
Hillary Clinton (DEM)	95
Gary Johnson (Lib)	27
Jill Stein (Dem)	7
Write-In	7
TOTAL	463

[Download Full Report](#) [Close](#)

47,785
Ballots Cast

64,828
Registered Voters



TALLY LIVE

ELECTION NIGHT REPORTING

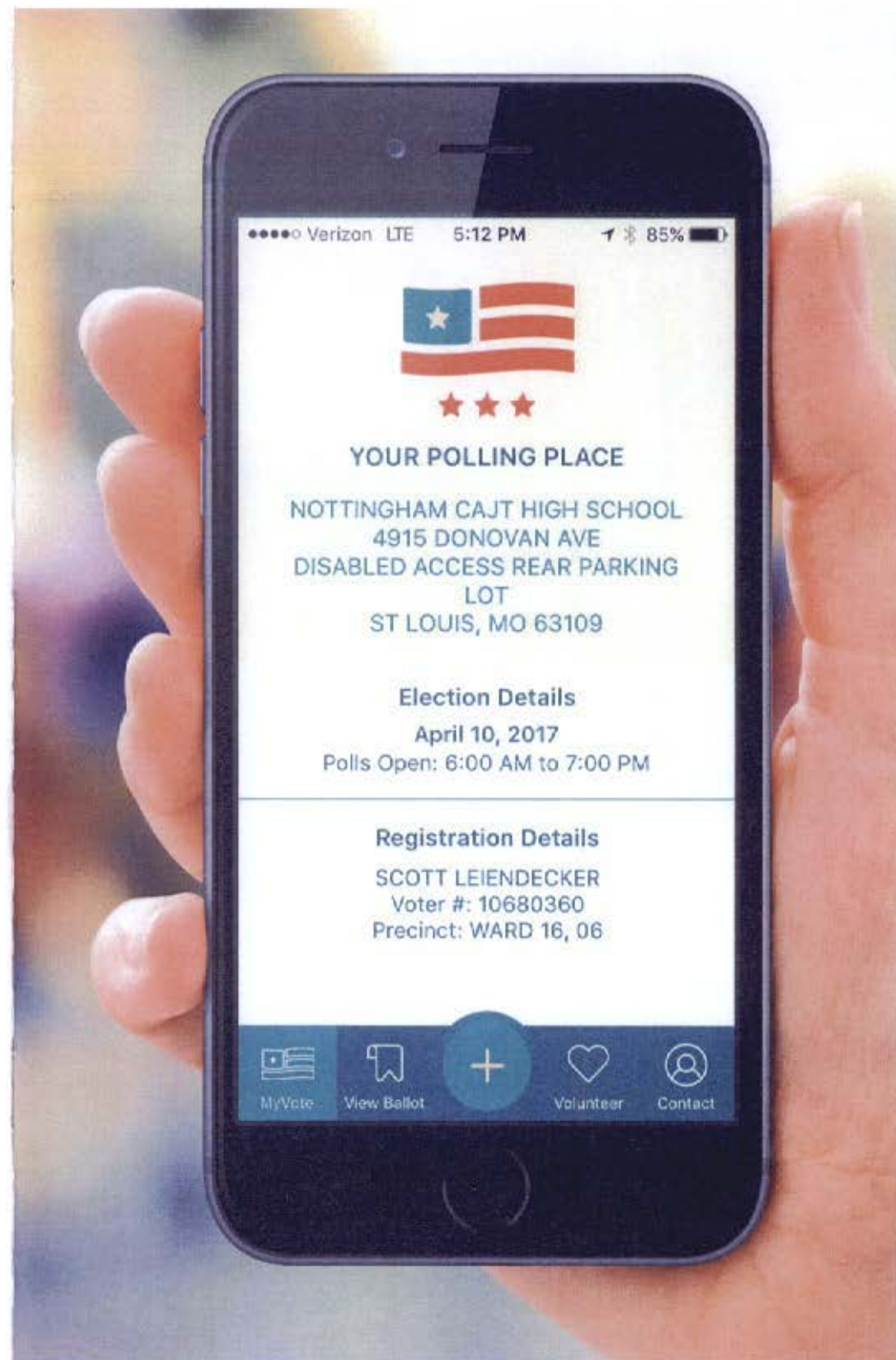
- Real-Time Web Updates
- Access From Any Computer, Tablet or Smartphone Device
- Interactive Graphics and Maps
- Built Within the Security of ePulse
- View Results That Matter to You
- Fully Customizable to Meet the Needs of All Jurisdictions



MY VOTE

**important election information
right in the voter's hand**

- See Election Details
 - Find Voting Location
 - Contact Local Election Office
 - Register to Vote
 - Change Address
 - Request an Absentee Ballot
 - View Ballot
 - See Elected Officials
 - Volunteer to Be A Poll Worker
-



PASSCODE EXPIRATION

mandatory code signing

STRONG PASSCODES

encrypted backups

common crypto APIs

WPA2 ENTERPRISE WITH 802.1X

SSL VPN

VPN On Demand

ANTI-PHISHING

policy refresh intervals

data protection

progressive device protection

CERTIFICATE REVOCATION

HARDWARE ENCRYPTION

instantaneous remote wipe

MAXIMUM FAILED ATTEMPTS

RSA SecurID

CRYPTOCARD

S/MIME

TLS

Cisco IPsec, L2TP, PPTP

restrictions

ENCRYPTED CONFIGURATION PROFILES

application
sandboxing

application runtime protection

certificate-based authentication

LAYERED SECURITY

OVER-THE-AIR PASSCODE ENFORCEMENT



sales@knowink.com | 855.765.5723 | www.knowink.com
2111 Olive Street, St. Louis, MO 63103



V10101701



**LEARN ABOUT VOTING BY MAIL AND CHECK
YOUR VOTER REGISTRATION AT**

www.elections.hawaii.gov

All properly registered voters will automatically receive their ballot approximately 18 days prior to the election. If your voter registration is up to date, no further action is required.

Ammuen ti Panagbotos Babsen ti Koreo ken Kitaen no umno met laang ti rehistrasionmo aW kas botante iti www.elections.hawaii.gov. Amin nga umno ti pannakairehistroda a botante ket automatiko a makaawatdanto iti balota agarup 18 nga aldaw sakbay ti eleksion. No ti rehistrasionmo a kas botante ket awan biddutna, awanen ti nasken nga aramidem.

請到 www.elections.hawaii.gov 瞭解更多以郵件投票的資訊。如果區內的選民登記記錄，所有準備進行登記的選民將在選前 18 天前自動收到選票。如果區的選民登記記錄是最新的，則無法採取進一步措施。



VOTING COMES TO YOU

Starting with the 2020 Elections, no polling places will be established. Visit www.elections.hawaii.gov to learn more.

JUL 09 VOTER REGISTRATION

Last day to register to vote to receive your mail ballot packet for the Primary Election.

JUL 21 MAIL BALLOT PACKET

Look for your Primary Election mail ballot packet to be delivered.

JUL 27 VOTER SERVICE CENTER

Voter Service Centers are open through Election Day. Services include in-person voting and same day registration.

AUG 08 PRIMARY ELECTION

Ballots must be received by 7:00 pm.

OCT 05 VOTER REGISTRATION

Last day to register to vote to receive your mail ballot packet for the General Election.

OCT 16 MAIL BALLOT PACKET

Look for your General Election mail ballot packet to be delivered.

OCT 20 VOTER SERVICE CENTER

Voter Service Centers are open through Election Day. Services include in-person voting and same day registration.

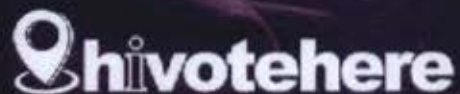
NOV 03 GENERAL ELECTION

Ballots must be received by 7:00 pm.

LANGUAGE ASSISTANCE

No kasapulam ti tulong iti lengguahe, awagan ti Opisina Dagiti Eleksion (Office of Elections) iti 808-453-VOTE (8683).

若您需要語言協助，請致電選舉辦公室 (Office of Elections)。電話：808-453-VOTE(8683)。



808.453.8683



elections@hawaii.gov



County of Maui
Office of the County Clerk
Elections Division
200 S High St
Wailuku HI 96793-2135

IMPORTANT

If the person named on this card is no longer at this address, please write "**NOT AT THIS ADDRESS**" and place card in the mail. This will allow us to clean-up the voter registration rolls.

Napateg. No li tao a nainaganān ihi daytoy a kard ket awanen ihi daytoy nga adres, isurat ti "NOT AT THIS ADDRESS" (awan ihi daytoy nga adres) ket ipatulod daytoy a kard babaen ti koreo. Ihi kasta, maikkankami ihi gundaway a mangdalus ihi listaan dagiti rehistrado a botante.

重要。如果此卡上的人不再居於此地址，請寫上「NOT AT THIS ADDRESS」「不在此地址」，並將此卡放置在郵箱內。這將讓我們清除該選民登記記錄。

NONPROFIT
U.S. POSTAGE
PAID
HONOLULU, HI
PERMIT NO. 205

RETURN SERVICE REQUESTED

IMPORTANT DATES

09 VOTER REGISTRATION

JUL

Final day voter registration is accepted online or by mail for the Primary Election.

21 MAIL BALLOT PACKET

JUL

Look for your Primary Election mail ballot packet to be delivered.

27 VOTER SERVICE CENTER

JUL

Voter Service Centers are open through Election Day. Services include in-person voting.

08 PRIMARY ELECTION

AUG

Ballots must be received by 7:00 pm.

05 VOTER REGISTRATION

OCT

Final day voter registration is accepted online or by mail for the General Election.

16 MAIL BALLOT PACKET

OCT

Look for your General Election mail ballot packet to be delivered.

20 VOTER SERVICE CENTER

OCT

Voter Service Centers are open through Election Day. Services include in-person voting.

03 GENERAL ELECTION

NOV

Ballots must be received by 7:00 pm.

LANGUAGE ASSISTANCE

Para kadagit naipatarus a materiales a mainaig iti eleksion wenno tulong iti lengguahe tapno makompletoyo daytoy nga aplikasion, awagan ti Opisina Dagiti Eleksion (Office of Elections).

若想獲得電子檔的翻譯材料，或者需要協助填表事宜，請聯繫選舉辦公室 (Office of Elections).

CONTACT US

For voter registration information, contact your Clerk's Office.

County of Hawaii (808) 961-8277
County of Maui (808) 270-7749
County of Kauai (808) 241-4800
City & County of Honolulu (808) 768-3800

For additional voting information, contact the Office of Elections.

(808) 453-VOTE (8683)
Toll Free: 1-800-442-VOTE (8683)

TTY: (808) 453-6150
Toll Free TTY: 1-800-345-5915

Email: elections@hawaii.gov
Website: elections.hawaii.gov

VOTE HERE



All registered Hawaii voters will automatically receive a mail ballot packet approximately 18 days prior to the election.

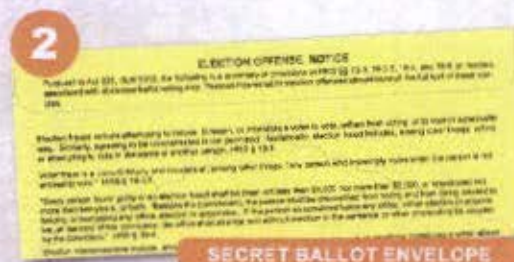
YOUR MAIL BALLOT PACKET INCLUDES:



BALLOT

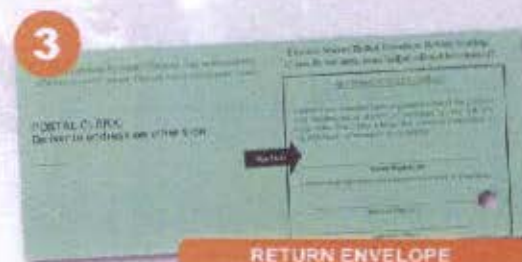
Before voting your ballot, review the instructions and the contests and candidates on both sides of the ballot. To vote, completely darken in the box to the left of the candidate using a black or blue pen.

If you change your mind or make an error, contact the Clerk's Office for a replacement ballot. Do not use whiteout.



SECRET BALLOT ENVELOPE

After voting your ballot, re-fold it and seal it in the secret ballot envelope. The secret ballot envelope ensures your right to secrecy as the ballots are opened and prepared for counting. Once sealed, place the secret ballot envelope in the return envelope.



RETURN ENVELOPE

Read the affirmation statement and sign the return envelope before returning it to the Clerk's Office. Upon receipt of your return envelope, the Clerk's Office validates the signature on the envelope. After your signature is validated your ballot will be counted.

You must sign the return envelope for your ballot to be counted.

RETURNING YOUR VOTED BALLOT

BY MAIL

The return envelope is postage paid via the U.S. Postal Service and addressed to your Clerk's Office. Your ballot should be mailed 2-3 days prior to Election Day to ensure it is received by the deadline.

AT A BALLOT DROP SITE

You can return your voted ballot at a designated ballot drop site established by the Clerk's Office. This includes any voter service center in your County or directly to your Clerk's Office. Locations and hours are available at elections.hawaii.gov.

**VOTED BALLOTS MUST BE
RECEIVED BY THE CLERK'S OFFICE
BY 7:00 PM ON ELECTION DAY.**

ARE YOU PROPERLY REGISTERED?

You must be properly registered to ensure you receive your mail ballot packet. That means, if you have moved to a new residence, changed your name or mailing address, you must update your registration record.

PREFER TO VOTE IN-PERSON?

You can still vote in-person at a voter service center in your County. Voter service centers are open 10-days before and on Election Day. Additional services include same day voter registration in case you missed the voter registration deadline and still want to vote.

AWAY DURING THE ELECTION?

If you will be away from home during the elections you can request your ballot be temporarily sent to an alternate mailing address for the Primary Election, General Election, or both. Complete an [Absentee Application](#) and submit it to your Clerk's Office no later than 7-days prior to the Election.

NEED MORE INFORMATION?

For additional information about voting by mail or to check your voter registration visit elections.hawaii.gov. Information will be updated regularly as the 2020 Elections approach to find a voter service center and ballot drop sites in your County.

HEADS UP, MAUI COUNTY!




STARTING IN 2020: HAWAII VOTES BY MAIL

Learn more at www.elections.hawaii.gov



OFFICE OF THE
COUNTY CLERK

Act 136 (2019) requires all elections statewide to be conducted by mail and establishes a limited number of voter service centers to receive personal delivery of mail-in ballots, accommodate voters with special needs, offer same-day registration and voting.

 (808) 270-7749



REGISTER to VOTE

I don't know if
I'm registered.

I changed
my address.

I've never
registered.

I changed
my name.

I turned
sixteen.

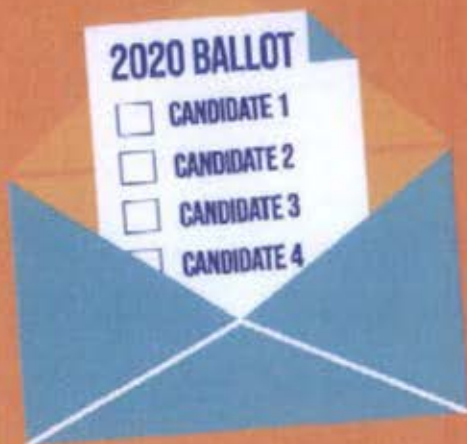


**To register to vote,
update your registration,
or for more information, visit:**

www.elections.hawaii.gov



**Office of the County Clerk
Elections Division
(808) 270-7749**



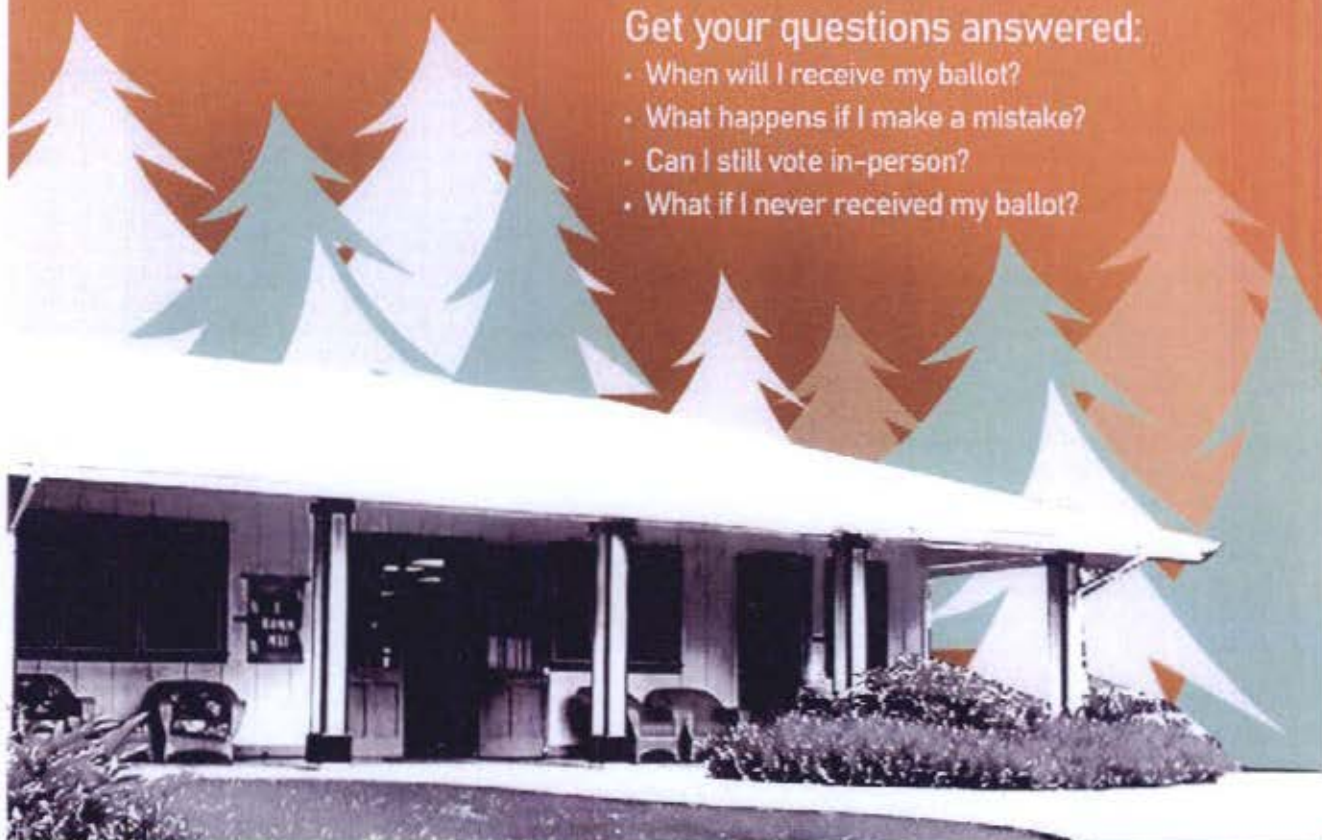
2020 ELECTIONS UPDATE: LANAI VOTES BY MAIL

**ATTEND
INFORMATIONAL
MEETING**

LANAI SENIOR CENTER

Get your questions answered:

- When will I receive my ballot?
- What happens if I make a mistake?
- Can I still vote in-person?
- What if I never received my ballot?



OFFICE OF THE
COUNTY CLERK

Act 136 (2019) was signed into law by Governor Ige on June 25, 2019. Act 136 (2019) requires all elections statewide to be conducted by mail and establishes a limited number of voter service centers to receive personal delivery of mail-in ballots, accommodate voters with special needs, offer same day registration and voting.



808.270.7749

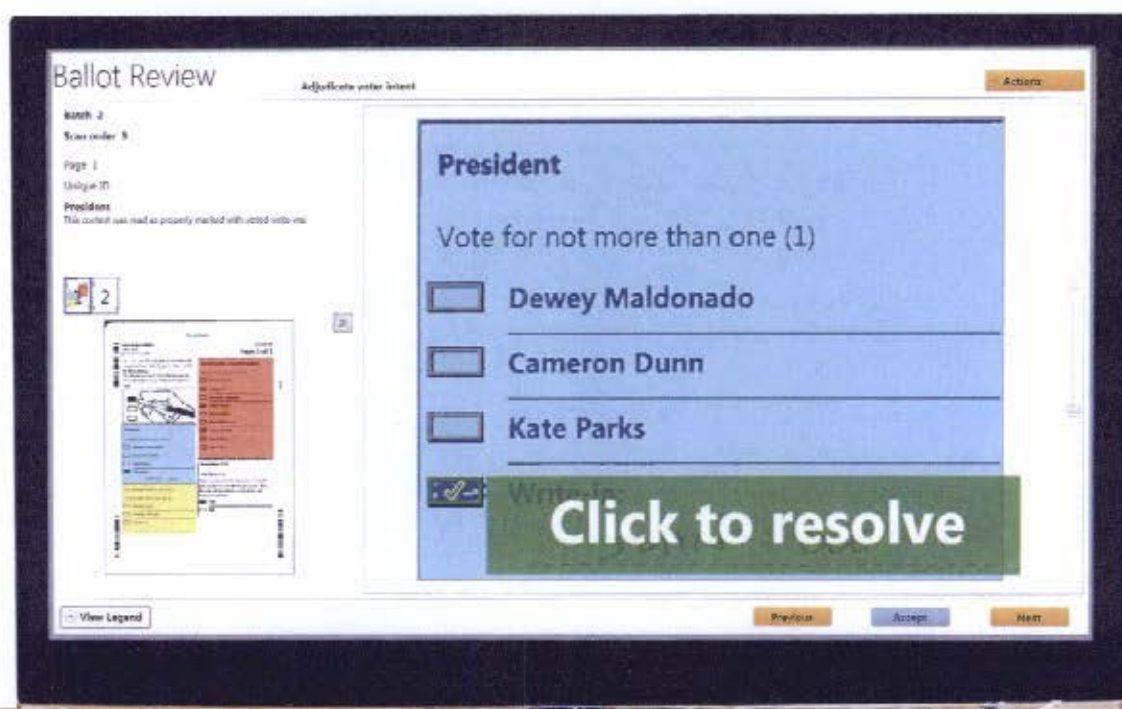


county.clerk@mauicounty.us



Verity Central

High-Speed Central Scanning



digital scanning with a difference

Designed for: Absentee/By-Mail & Other High-Volume Ballot Processing



Easy.

Versatile.

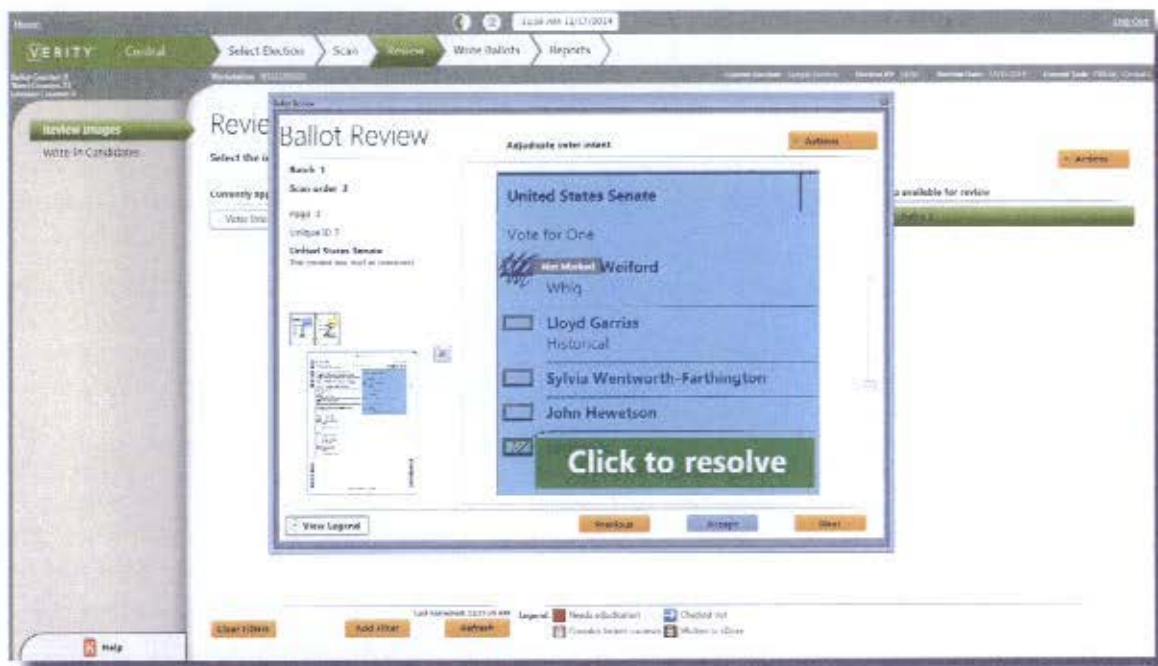
Trustworthy.

When you're faced with a huge stack of ballots to scan, you want the smarter, next-generation digital solution – Verity Central

Hart brought digital technology to elections more than a decade ago. Only Verity Central offers next-generation smarts with the most efficient workflow, the easiest onscreen adjudication and auditing features like you've never seen.

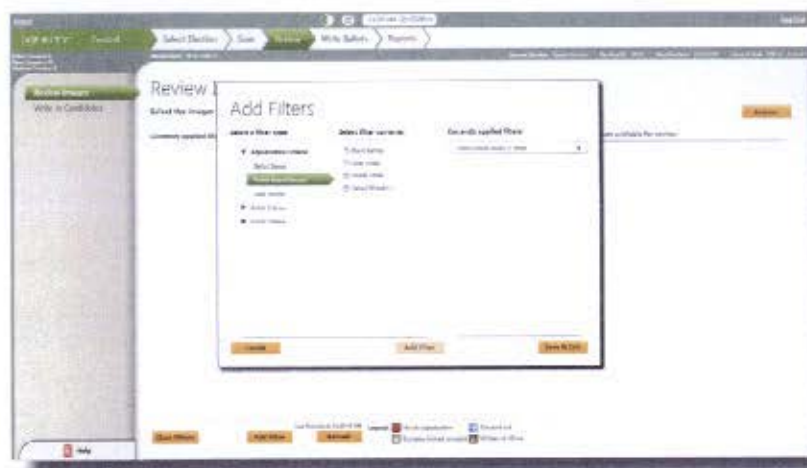
True onscreen adjudication

Verity Central provides unique contest-by-contest resolution for all voter intent issues with clear, color-coded flags and Verity's consistently easy-to-understand, plain-language instructions.



Transparency and easy auditability

With an unmatched variety of image filters, you easily locate exactly the ballot images you want. Plain-language processing notes clearly show exactly how voter selections are recorded.



Election administration simplified



No presorting

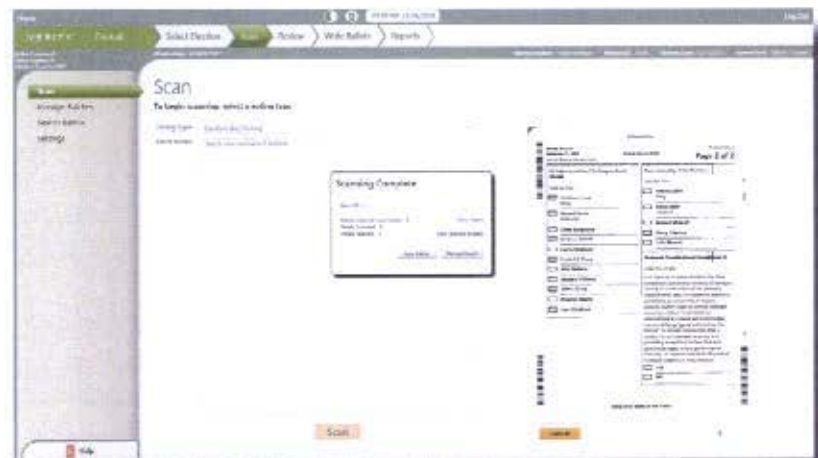
Scan multiple precinct styles and/or multiple languages in the same batch, in any orientation.

No outstacking and rescanning

With Verity Central, there's no extra work – just an easy, efficient workflow. Preserve your ballots in their original form, with minimal handling.

No-wait scanning

Verity Central scans without tabulating, so you can start scanning weeks before polls close on Election Day. No more late nights at the scanner.



Cost-effective scalability

Choose the right Hart-integrated COTS scanner for your jurisdiction's size, budget and need for speed. You get industry-best scanning technology with the assurance of Hart support – and EAC certification.

Next-generation digital scanning

Built on 10+ years of digital experience, Verity Central gets more out of the technology than any other high-speed scanning solution – more efficiency, more auditability, more speed.



The Future of Elections

Hart InterCivic is a full service election solutions innovator, partnering with state and local governments to deliver the most secure, accurate and reliable elections.

©2016 Hart InterCivic, Inc. Hart InterCivic and Verity are registered trademarks of Hart InterCivic. All rights reserved.



Cost-effective scalability

Choose the right Hart-integrated COTS scanner for your jurisdiction's size and budget. With options for multiple, networked scanning stations connected to a central server, you can cost-effectively add capacity as needed.

Reduced training time

User-friendly interface has the same look-and-feel as other Verity Voting system components, for shorter training time and lower training costs.

Versatile for long-term value

Verity Central is part of the holistic, scalable Verity Voting solution that can adapt as your needs change.

This brochure contains marketing information that describes the benefits and capabilities of Verity products and is not intended to represent specific implementations for your jurisdiction. State or local jurisdiction specific requirements may affect how the products are implemented and used.



Verity

election software like no other

VERITY®

DATA



Data

election data
management

BUILD



Build

election
definition

CENTRAL



Central

absentee /
by-mail scanning

COUNT



Count

tabulation and
reporting

integrated end-to-end election management



Easy.

Versatile.

Trustworthy.

Because software matters

Intuitive, plain language interfaces make it simple for elections staff to quickly get up to speed and efficiently run every aspect of every election.

The screenshot displays the Verity election software interface. At the top, there's a navigation bar with tabs: "Data", "Select Election", "Edit Data", "Preview Ballots", and "Link Election Data". The "Preview Ballots" tab is active. Below the navigation bar, there's a sidebar on the left with options: "Select Template", "Data Validation", "Preview", and "Reports". The "Preview" option is selected. The main area shows a "Preview Ballot" screen for "Sample County, USA" on "July 4, 2004". The ballot is titled "Page 1 of 1". It includes sections for "GENERAL ELECTIONS", "LOCAL ELECTIONS", and "Propositions". The "GENERAL ELECTIONS" section lists candidates for "City of Sampleton" with checkboxes for each. The "LOCAL ELECTIONS" section lists candidates for "City of Sampleton" with checkboxes for each. The "Propositions" section lists "Proposition 1" and "Proposition 2" with checkboxes for each. The interface is clean and intuitive, with clear instructions and a logical flow.

The easiest election software you'll ever use

With a common look and feel across the whole system, Verity software suite is holistic and integrated.

Long-lasting ROI

Verity software is designed for today's election needs – and tomorrow's. It accommodates flexible ballot layout, Vote centers, precinct voting, convenience voting, ranked choice voting and more. So today's investment pays off for years to come.

Choose only the components you need

Versatile, "one-path" election management

With Verity, you create the election just once for all devices and all methods of voting – whether you're preparing for Election Day, early voting, central scanning, vote centers, or another scenario. No workarounds, no duplicated effort.



election data management



election definition



absentee / by-mail scanning



tabulation and reporting



Built-in transparency for trusted results

With Verity's comprehensive audit logging and robust report filters, plain-language information about all user actions is at your fingertips. And Verity safeguards your election with the latest security protocols.

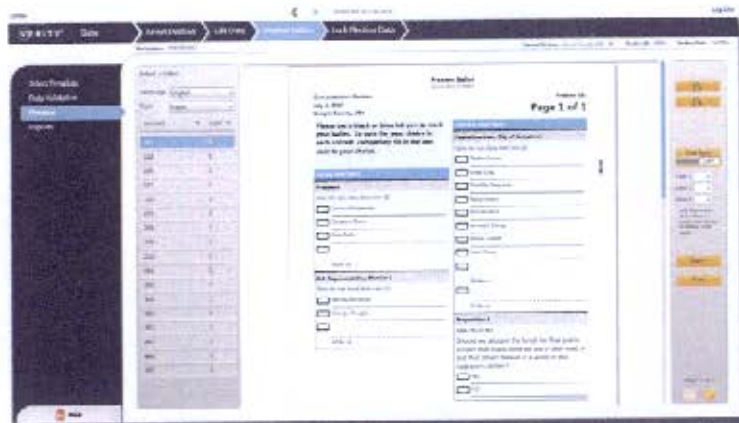


Verity Data

Election Data Management



Verity Data makes it easy to manage all the data that goes into every election. And Verity Data speaks to you in plain English – not in “code.”



Easy, quick ballot layout

With customizable ballot templates and a modern graphical interface, ballot layout is easy and quick.



Efficient data management

You save time because you can re-use polling location names and other repeated data from previous elections, and you can import data from outside sources.



Flexible audio production

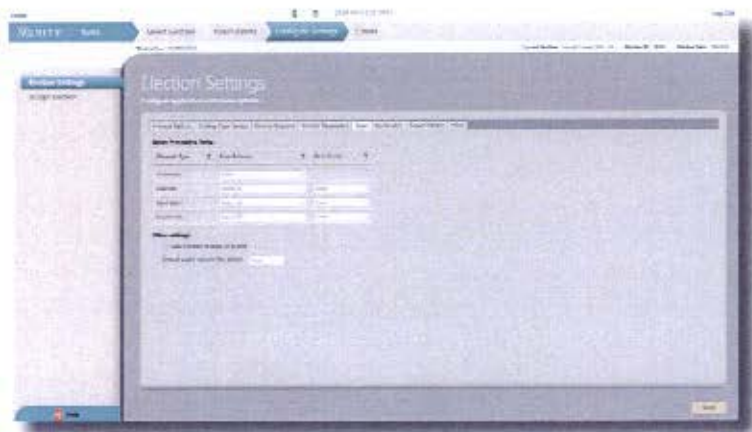
Verity Data includes live voice recording for audio creation.

Verity Build

Election Definition and Deployment



Build your election once for all components – for any voting type. Program, proof and print your own ballots; no vendor help is needed.



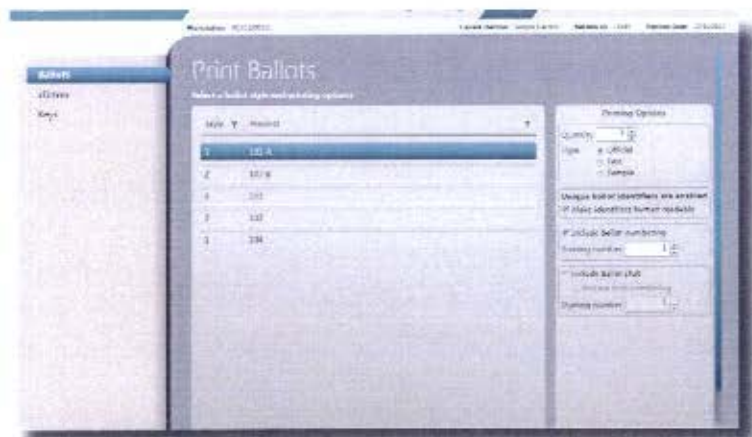
Get up to speed fast

With Verity Build's user-friendly interface, you don't have to be a programmer to define and deploy an election.



Flexible efficiency

Deploy your election with the election type, ballot sizes, device settings and many other options you choose.



Quick, accurate ballot and data proofing

Clear onscreen renderings let you preview ballots by precinct style and make corrections in real time.

Automated test deck

With Verity Build's import of test deck marking patterns, staff no longer spends hours or days hand-marking ballots for logic and accuracy testing.

Verity Central

High-speed Central Scanning



Only Verity Central offers next-generation digital technology with the most efficient workflow, the easiest onscreen adjudication and auditing features like you've never seen.



True onscreen adjudication

Verity Central provides unique contest-by-contest resolution for all voter intent issues with clear, color-coded flags and Verity's consistently easy-to-understand, plain-language instructions.

No presorting

Scan multiple precinct styles and/or multiple languages in the same batch, in any orientation.

No outstacking and rescanning

With Verity Central, there's no extra work – just an easy, efficient workflow. Preserve your ballots in their original form, with minimal handling.

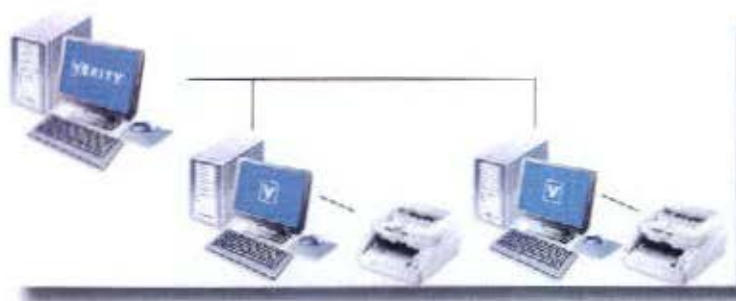


No-wait scanning

Verity Central scans without tabulating, so you can start scanning weeks before polls close on Election Day. No more late nights at the scanner.

Transparency and easy auditability

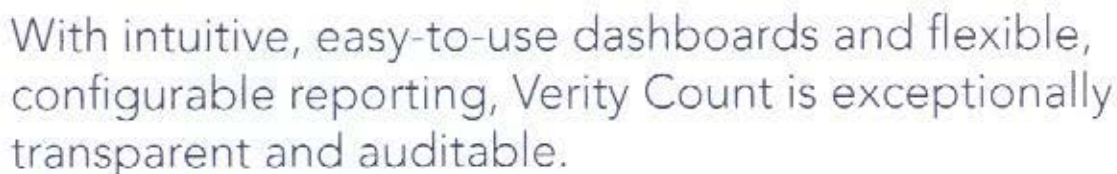
With an unmatched variety of image filters, you easily locate exactly the ballot images you want. Plain-language processing notes clearly show exactly how voter selections are recorded.



Cost-effective scalability

Choose the right Hart-integrated COTS scanner for your jurisdiction's size, budget and need for speed. You get industry-best scanning technology with the assurance of Hart support – and EAC certification.

Tabulation and Reporting



Scalable for faster tabulation

Flexible, customizable reporting

Efficient, adjudication of write-ins

Robust post-election auditing

Access exactly the cast vote record you need with Verity Count's unique Auditing Dashboard and an unmatched variety of highly customizable filters.



The Future of Elections

Exceptionally easy to use, Verity's software suite streamlines election management. It's flexible for how you vote – today and tomorrow. And transparency and security are built in.

www.hartintercivic.com | info@hartic.com | 800.223.4278

©2015 Hart InterCivic, Inc. Hart InterCivic and Verity are registered trademarks of Hart InterCivic. All rights reserved.

This brochure contains marketing information that describes the functional capabilities of Verity products, and is not intended to represent specific implementations for your locale. State- and/or jurisdiction-specific requirements may affect how the products are permitted to be implemented and used.



Verity Touch Writer

Ballot Marking Device



ballot marking for everyone

Designed for: Early Voting | Election Day | Vote Centers | Central Election Offices



Voters

Simple

Touchscreen interface with plain-language instructions inspired by EAC/AIGA Design for democracy standards make voting simple. No ballots to load, no waiting.

Provides true equality of access

Verity Touch Writer, paired with a Hart-integrated COTS printer, produces identical full-sized paper ballots for all voters – no segregated ballots. Includes adjustable audio and contrast settings and compatibility with “sip-and-puff” and other adaptive controls.

The voting booth offers easy wheelchair access, and the tethered controller can be placed wherever it is easiest for the voter to use.

Easy second-chance voting

Voters can review the ballot summary at any time, and it's easy to change selections before printing the ballot.



Election Managers

Adaptable

Accommodates limitless ballot styles and is suitable for all voters in a variety of settings. Can print blank ballots as needed.

Reduces training time

User friendly interface has the same look-and-feel as other Verity voting components, for shorter staff training time and lower training costs.

Nearly maintenance free

Verity Touch Writer is exceptionally simple to maintain; election staff easily completes most tasks independently.



Poll Workers

Easy to transport, set up, and use

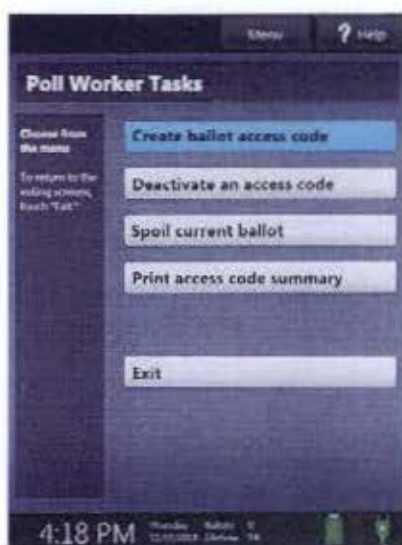
Compact and lightweight, Verity Touch Writer is easy to transport in ordinary vehicles and easy to set up at the polling place.

Easy to start up and shut down in minutes

Simple, plain-language, step-by-step onscreen instructions.

Easy ballot activation

Voters can activate their own correct ballot style using a simple access code – no pre-loading of ballots or proprietary cards required.



Only Verity uses AIGA Design for Democracy templates; its plain language interface is the easiest to use.

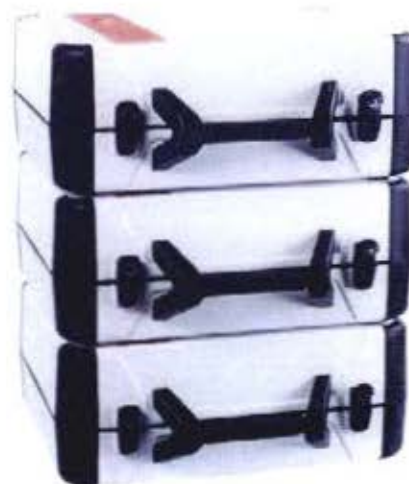
Warehouse Staff

Saves on storage space

Verity Touch Writer is compact and stackable, so you use less storage space.

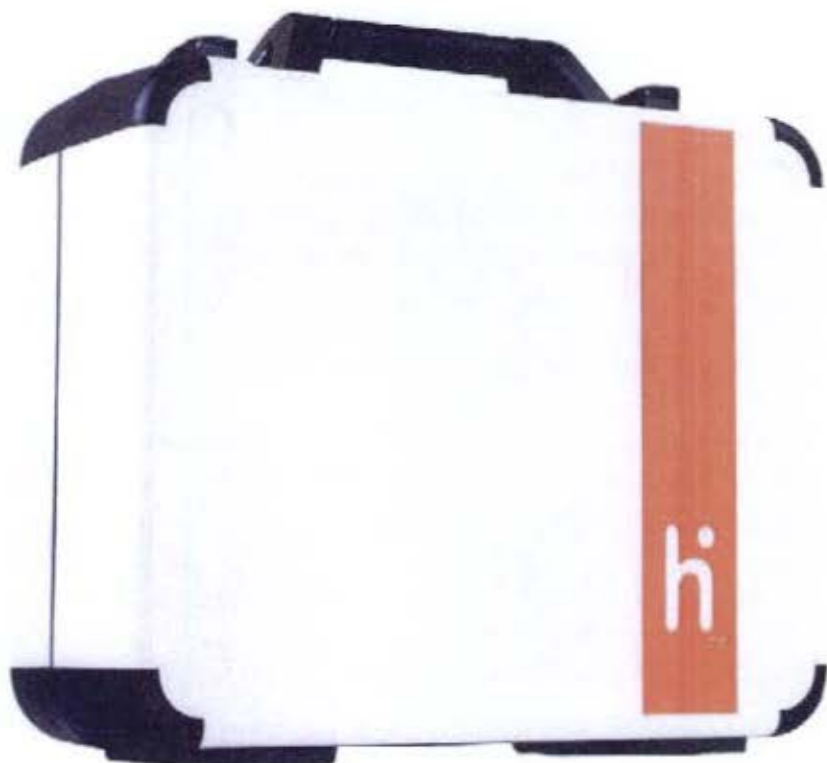
Easy delivery

A small footprint means Verity Touch Writer requires minimal manpower and muscle to deliver.



Easy, accessible ballot marking

With its user-friendly interface and comprehensive accessibility features, Verity Touch Writer makes ballot marking easy for everyone.



The Future of Elections

Hart InterCivic is a full service election solutions innovator, partnering with state and local governments to deliver the most secure, accurate and reliable elections.

©2016 Hart InterCivic, Inc. Hart InterCivic and Verity are registered trademarks of Hart InterCivic. All rights reserved.



Lower total cost of ownership

Compact size saves storage space and reduces transportation costs. Setup at the polling place is easy for anyone – reducing staffing costs. And Verity Touch Writer requires very little maintenance.

Versatile for long-term value

Accommodates almost limitless ballot styles, and is part of the holistic, scalable Verity Voting solution that can adapt as your needs change.

Lifecycle longevity

Verity Touch Writer promises many, many years of cost-effective service.

This brochure provides marketing information that describes the functional capabilities of Verity products, and is not intended to represent specific implementations for your locale. State and/or jurisdiction-specific requirements may affect how the products are implemented for production use and used.



Verity Scan

Digital Ballot Scanning



exceptionally easy and accurate scanned vote capture

Designed for: Early Voting | Election Day | Vote Centers



Voters

Quick ballot scanning

Patented, animated arrows show the voter exactly when and where to insert the ballot. There's no wrong way to insert the ballot lengthwise, and Verity Scan reads both sides of the ballot in seconds.

Easy second-chance voting

Easy-to-understand, plain language notices alert voters to possible errors, giving them a second chance to make any corrections.



Election Managers

Ensures reliable audits of voter intent and enables fast recounts

You can configure Verity Scan to digitally capture full images of scanned ballots.

Securely stores voting data

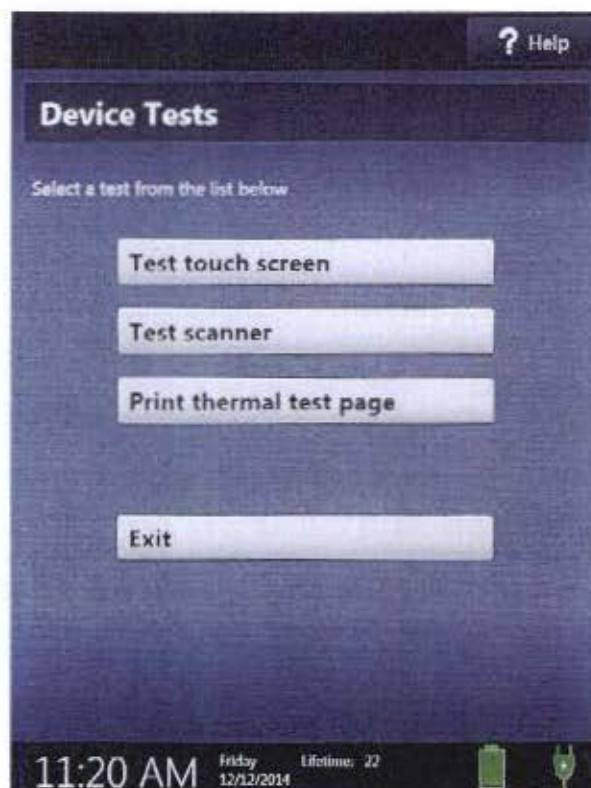
Secure, redundant, physically separate storage locations for ballot images, case vote records and audit logs assure officials that voting data is safe.

Provides polling place reports

Built-in thermal printer can print ballot count totals or results at the polling place after polls close.

Enables immediate resolution of write-ins at the polling place

Can print write-in images for on-the-spot write-in resolution.



Poll Workers

Easy to transport, set up and use

Verity Scan is easy to transport in ordinary vehicles and easy to set up at the polling place. And the collapsible ballot box folds to just 6 inches thin.

Easy to start up and shut down in minutes

Simple, plain-language, step-by-step onscreen instructions.

Fewer voter questions

Plain-language instructions, animated guide lights, and jam-free ballot feeding means easy scanning for voters — and less work for poll workers.



Only Verity uses AIGA Design for Democracy templates; its plain language interface is the easiest to use.



Ballot box folds to 6" thin

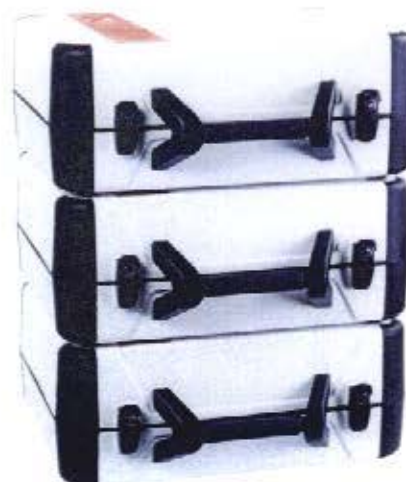
Warehouse Staff

Saves on storage space

Verity Scan is compact and stackable, so you use less storage space.

Easy delivery

A small footprint means Verity Scan requires minimal manpower and muscle to deliver.



Exceptionally easy to use

With its plain-language, Design for Democracy-based interface and easy-scanning features, Verity Scan is a breeze for voters and poll workers to use.



The Future of Elections

Hart InterCivic is a full service election solutions innovator, partnering with state and local governments to deliver the most secure, accurate and reliable elections.

©2016 Hart InterCivic, Inc. Hart InterCivic and Verity are registered trademarks of Hart InterCivic. All rights reserved.



Versatile for long-term value

Verity Scan easily manages hundreds of ballot styles, so you can use it in a large variety of voting scenarios, even if your needs change.

Cost-effective storage, transport and setup

Compact size saves storage space and reduces transportation costs. Easy setup at the polling place can lower staffing costs.

Cost-saving features

With on-board testing and calibration, Verity Scan requires very little maintenance.

Lifecycle longevity

Early in its lifecycle and with a robust new supply chain, Verity Scan promises many, many years of cost-effective service.

The brochure contains marketing information that describes the benefits of our products. It does not constitute an offer or a solicitation of securities. For more information, please contact your local securities broker or the issuer of the securities. The products are not intended to be used for any other purpose.