

CAR.Committee

From: Strife, Susie <sstrife@bouldercounty.org>
Sent: Friday, August 14, 2020 10:54 AM
To: CAR.Committee
Cc: Nicole A. Siegel
Subject: CAR-1(2) presentation
Attachments: Maui County_Strife Presentation_.pdf

Greetings,

Please see my presentation attached for Monday's meeting.

Thank you for including me in this important discussion.

Warmly,
Susie

Susie Strife, PhD
Director of Sustainability, Climate Action & Resilience



BOULDER COUNTY
SUSTAINABILITY

www.BoulderCountySustainability.org



Boulder County: Climate Initiatives

Susie Strife, Director of Sustainability, Climate Action & Resilience
8/17/2020 Maui County





Climate Change Impacts in Boulder County



HOTTER SUMMERS



INCREASED FLOODING



MORE WILDFIRES



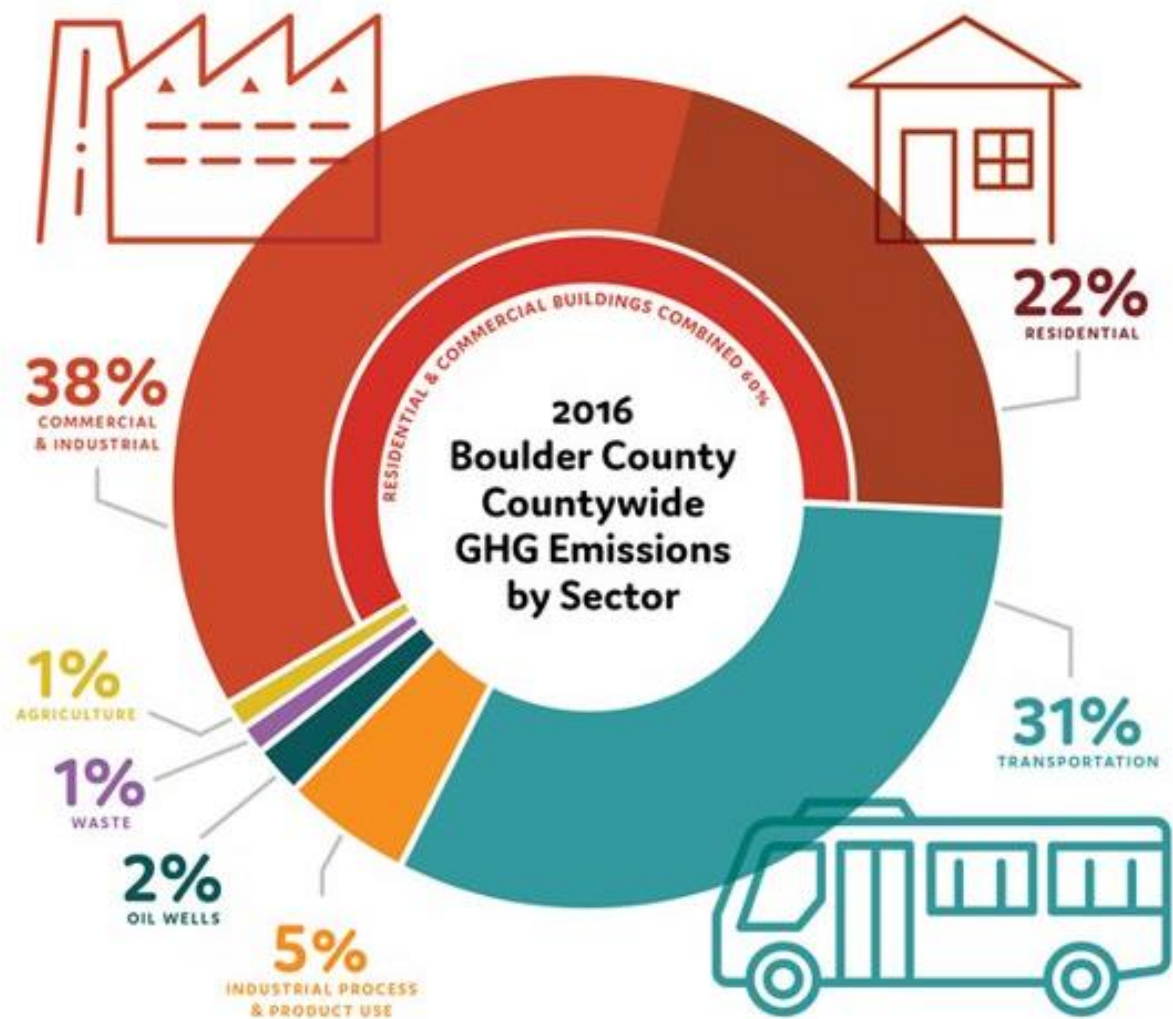
WATER SHORTAGE



HEALTH PROBLEMS



ECONOMIC IMPACT



A wide-angle photograph of a flat roof covered with rows of dark blue solar panels. The panels are mounted on silver metal racks. In the background, there are trees with yellow and orange autumn foliage, and further back, a range of mountains under a clear blue sky. A large, semi-transparent white circle is overlaid on the left side of the image, containing the text.

DECARBONIZING BUILDINGS



Energy Efficiency & Renewable Energy

- Regulation / Building Codes
- Voluntary Incentive Based Programs
 - EnergySmart
 - Partners for a Clean Environment



STATEWIDE POLICY

2005

2030

45%

2050

90%



Communities for Climate Action (CC4CA)

- Communities for Climate Action is a coalition of 34 local governments across Colorado advocating for stronger state and federal climate policy.
- CC4CA is governed by a Board of Directors of representing all of the member communities.



Communities for Climate Action (CC4CA.org)

- Voice of local governments
- Legislative process
- Rulemaking process



CARBON REMOVAL



Carbon Sequestration Efforts

- Carbon sequestration pilots
- Supporting regenerative ag. practices
- Localized compost facility

A photograph of a forest with white-barked trees, likely aspens, standing amidst a dense carpet of autumn foliage in shades of green, yellow, and red. A semi-transparent circular overlay is positioned on the left side of the image.

Questions?



Thank you

Susie Strife, PhD
sstrife@bouldercounty.org

