

## **CAR.Committee**

---

**From:** Hilary Papendick <hpapendick@smcgov.org>  
**Sent:** Saturday, August 15, 2020 7:00 PM  
**To:** CAR.Committee  
**Subject:** CAR-1(2) presentation  
**Attachments:** San Mateo County Presentation CCARv4.pptx

Please see attached for my presentation for CAR meeting on August 17th.

Thank you,

Hilary Papendick  
County of San Mateo



# BUILDING A CLIMATE READY COMMUNITY



SMC Adaptation Program Overview / 2020





# PRESENTATION OVERVIEW

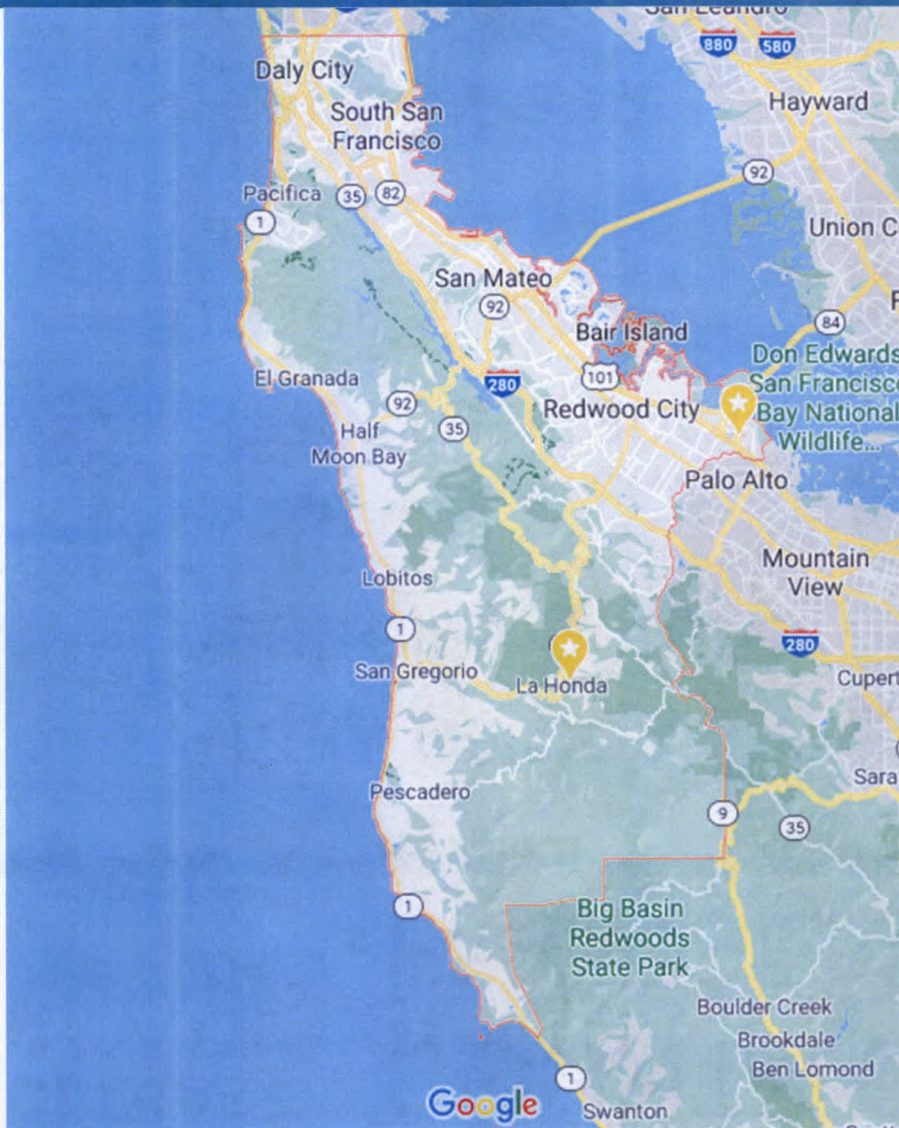
---

- San Mateo County Actions
  - County Context
  - County operations policy
  - Climate Hazards Assessment
  - Land Use Planning
  - Climate Collaborative
- State policy context
- Flood and Sea Level Rise Resiliency District





# SAN MATEO COUNTY



- Bay and Coast
- 750,000 people
- 20 cities
- Facebook, Visa, Genentech headquarters
- Over 100,000 people at risk from 3 feet of sea level rise





# COUNTY CLIMATE EMERGENCY DECLARATION

- Attain carbon neutrality before 2045
- Enact resiliency policies and plans
- Include health, social-economic and racial equity considerations





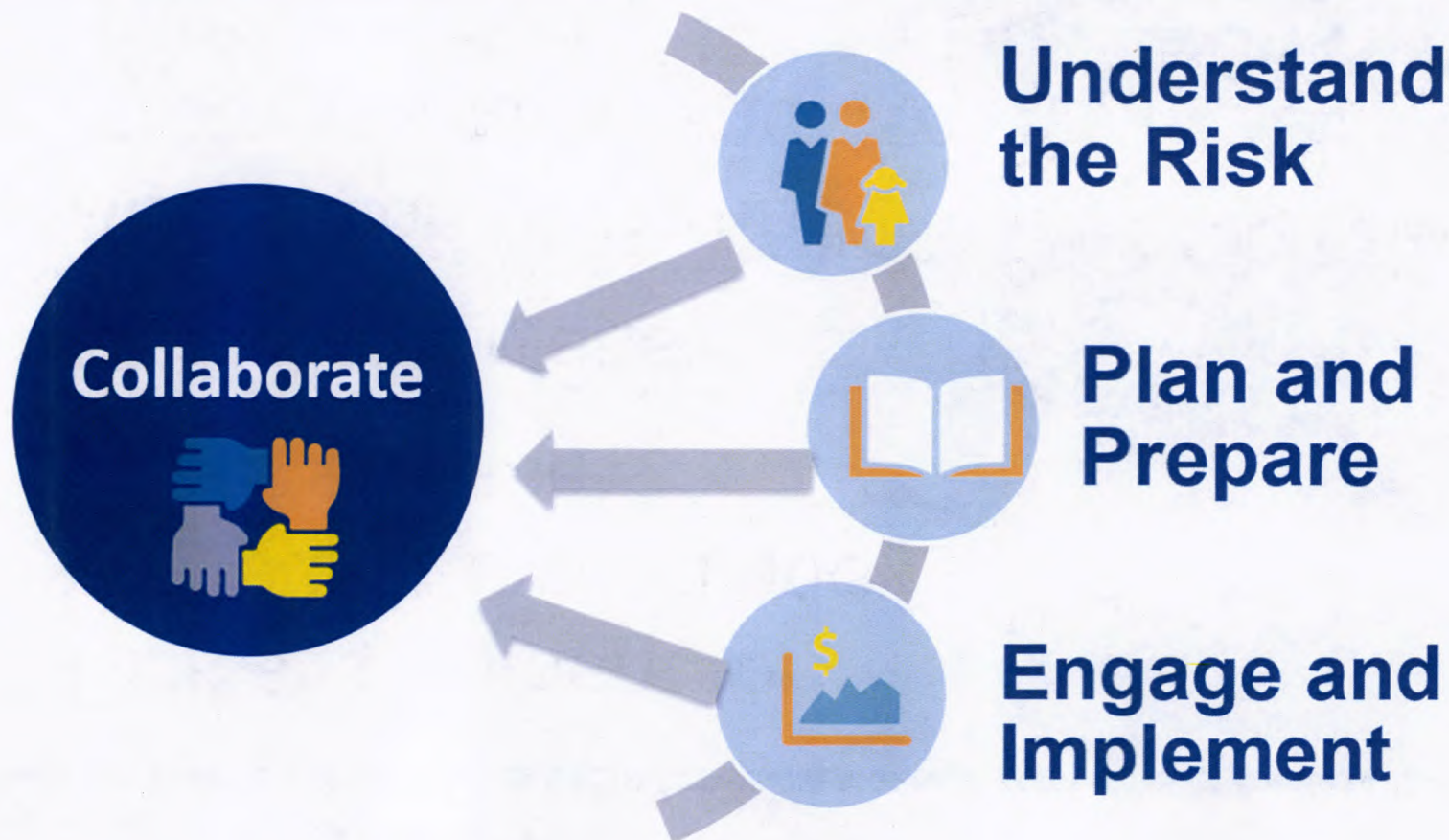
# COUNTY SEA LEVEL RISE POLICY

- Risk assessment for all County-owned and operated assets
- Monitoring plans
- Adaptation plans and strategies when and where needed





# RESILIENCE APPROACH



# UNDERSTAND THE RISKS





# SEA LEVEL RISE VULNERABILITY ASSESSMENT



**ASSESS VULNERABILITY**



**PROVIDE ACTIONABLE  
RESULTS**



**BUILD AWARENESS**

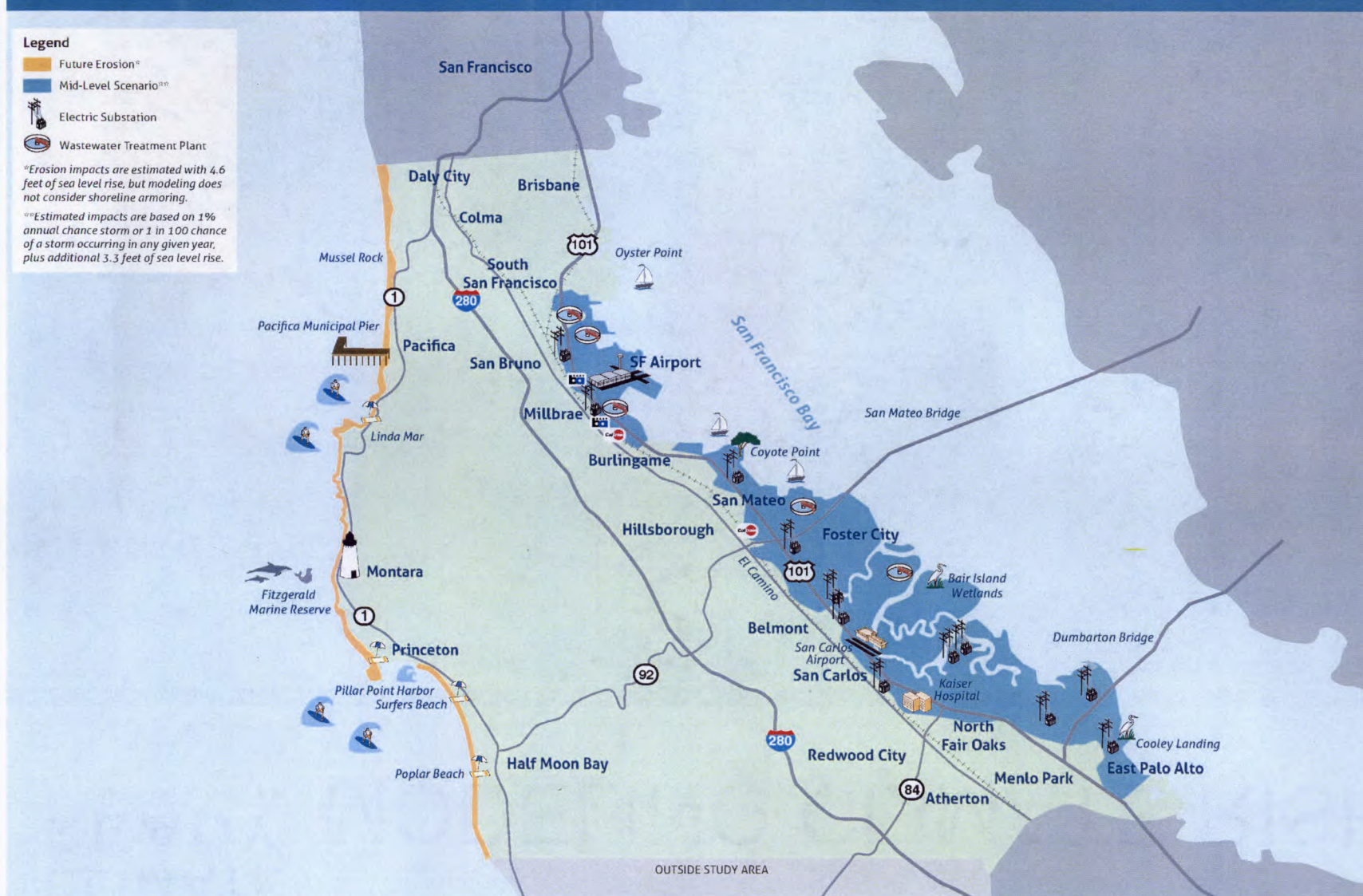


**FACILITATE  
COLLABORATION**



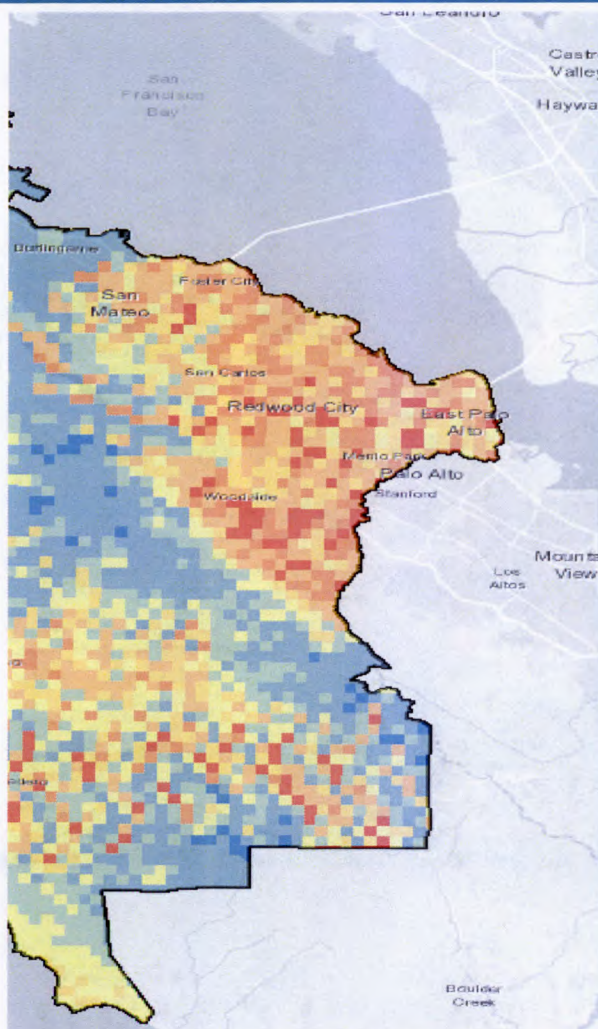


# VULNERABILITY AND IMPACTS

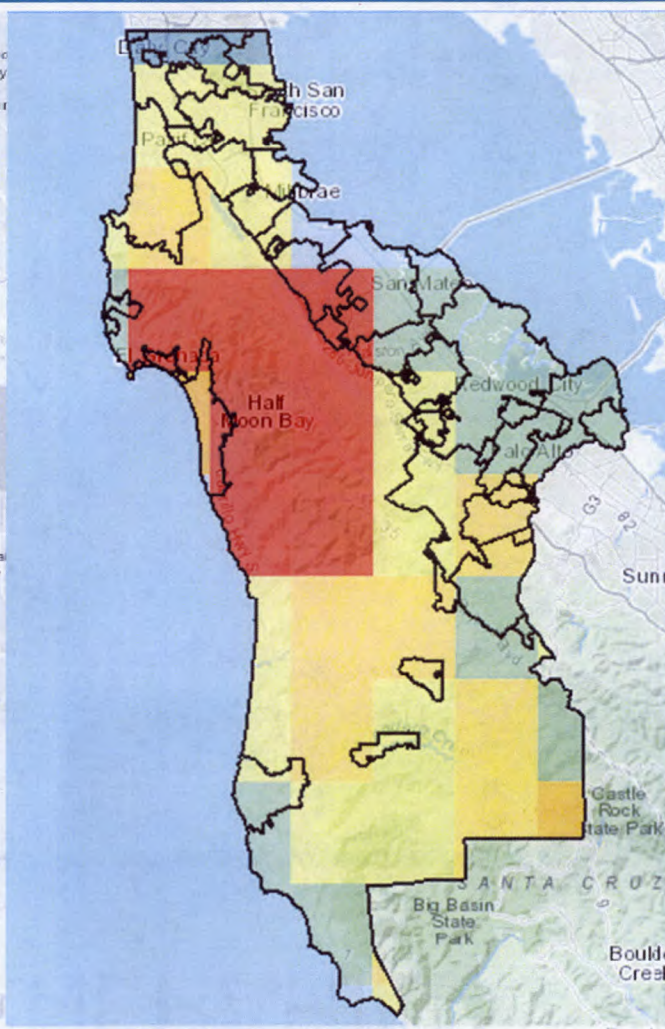




# MODELING CLIMATE RISKS



**Maximum Temperatures**



**Wildfire Areas**



**Inland Flooding**



# FRONTLINE COMMUNITIES INDICATORS MATRIX

- 21 Total Indicators
- Sources
  - US Census
  - Cal EPA
  - San Mateo County
  - Association of Bay Area Governments
- Phases of Disaster
- Climate Hazards





# PLAN AND PREPARE





# PLANNING AND ASSISTANCE

---

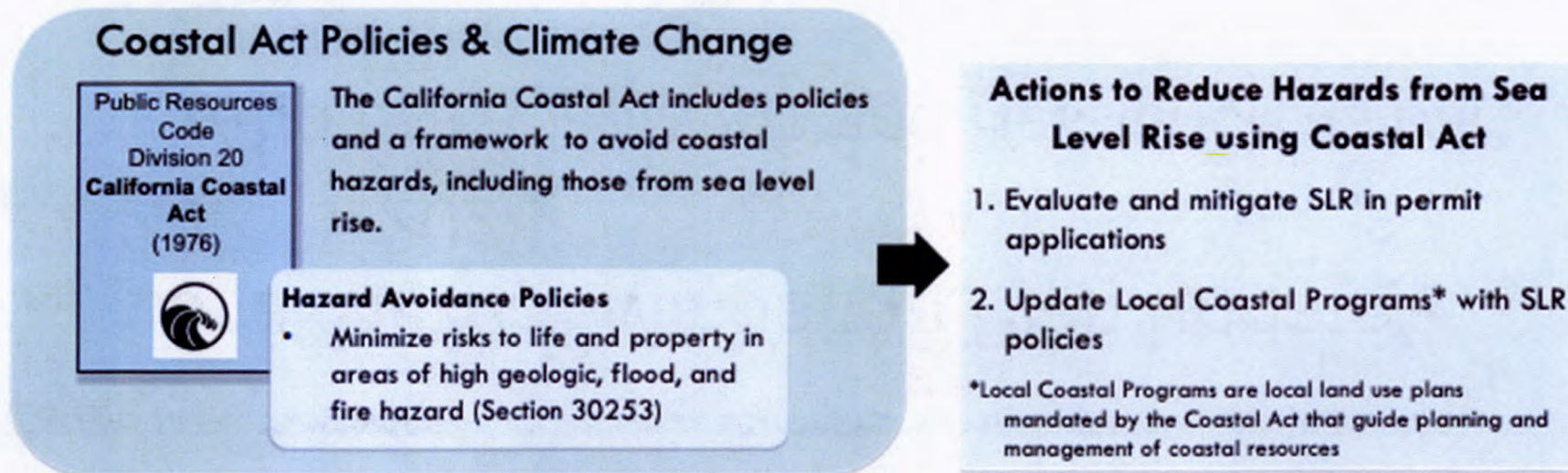
- Local Hazard Mitigation Plan update –  
2021 – 2024
  - Address Adaptation and Resilience as part  
of the plan
- Safety Element Update
  - Land Use policies to address adaptation
- Resilience Grants





# CALIFORNIA COASTAL COMMISSION

- Statewide agency established 1976
- Regulates Land Use in Coastal Zone
- Sea Level Rise Guidance Documents







## Key Requirements

(McAteer-Petris Act and San Francisco Bay Plan)



### In the Bay:

- Larger shoreline projects require a Risk Assessment
- If risk to public safety = Resilient to mid-century of sea level rise projections.
- If project life beyond mid-century = Adaptation Plan.

### In the 100-foot Shoreline Band:

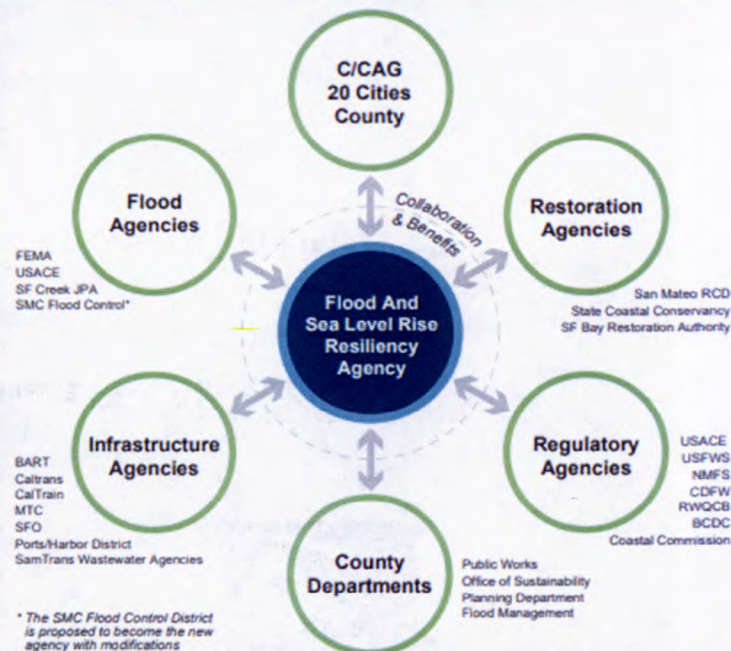
- BCDC authority generally limited to ensuring maximum feasible public access.
- Public access must be viable.





# RESILIENCY DISTRICT

## Flood and Sea Level Rise Resiliency Agency Proposal 21st Century Solutions for One Resilient Shoreline



**A unified voice for a  
one shoreline solution**

*A Resilient San Mateo County by 2100*

More info at: <https://resilientsanmateo.org/>





# ENGAGE AND IMPLEMENT

- SMC Climate Ready Collaborative
  - Learning Sessions
  - Task Forces
  - Community capacity building projects
- High School Education Programs
- Community Engagement





**CLIMATE  
READY**  
SAN MATEO COUNTY

# THANK YOU!



Contact: Hilary Papendick, [hpapendick@smcgov.org](mailto:hpapendick@smcgov.org)  
[smcsustainability.org/climate-change/](https://smcsustainability.org/climate-change/)

