

CAR.Committee

From: Allala, Lylianna <Lylianna.Allala@seattle.gov>
Sent: Monday, August 17, 2020 5:26 AM
To: CAR.Committee
Subject: CAR-1(2) presentation
Attachments: 8.17.2020 OSE_Maui County Presentation.zip

See attached



Lylianna Allala (she/her/ella)
Climate Justice Director
City of Seattle, [Office of Sustainability & Environment](#)
206.386-4668 | Lylianna.allala@seattle.gov
[Facebook](#) | [Twitter](#) | [Blog](#)



[FAQS](#) | [BLOG](#)

PRESENTER:

Lylianna Allala, Climate Justice Director



**Seattle Office of
Sustainability &
Environment**

Toward a sustainable, equitable,
and carbon neutral future





ABOUT OSE

- Established in 2000 to develop and coordinate environmental policies.
- Staff of ~30 bring innovation, passion, and creativity to respond to and lead on Seattle's biggest environmental challenges.
- Partners across departments, agencies, and sectors.
- Advances racial, social, and environmental justice throughout Seattle's environmental work and implements Seattle's Race and Social Justice Initiative (RSJI).





FOCUS AREAS



CHAMPIONING EQUITY

Works to ensure that those most affected by the combined impact of hazardous pollutant exposure, climate change, and racial-socio economic conditions lead on designing solutions and benefit from our investments.



MEETING THE CLIMATE CHALLENGE

Develops and implements policies and programs that reduce climate pollution from transportation and buildings sectors.

Positions our community to thrive in the face of the climate impacts we are likely to experience.

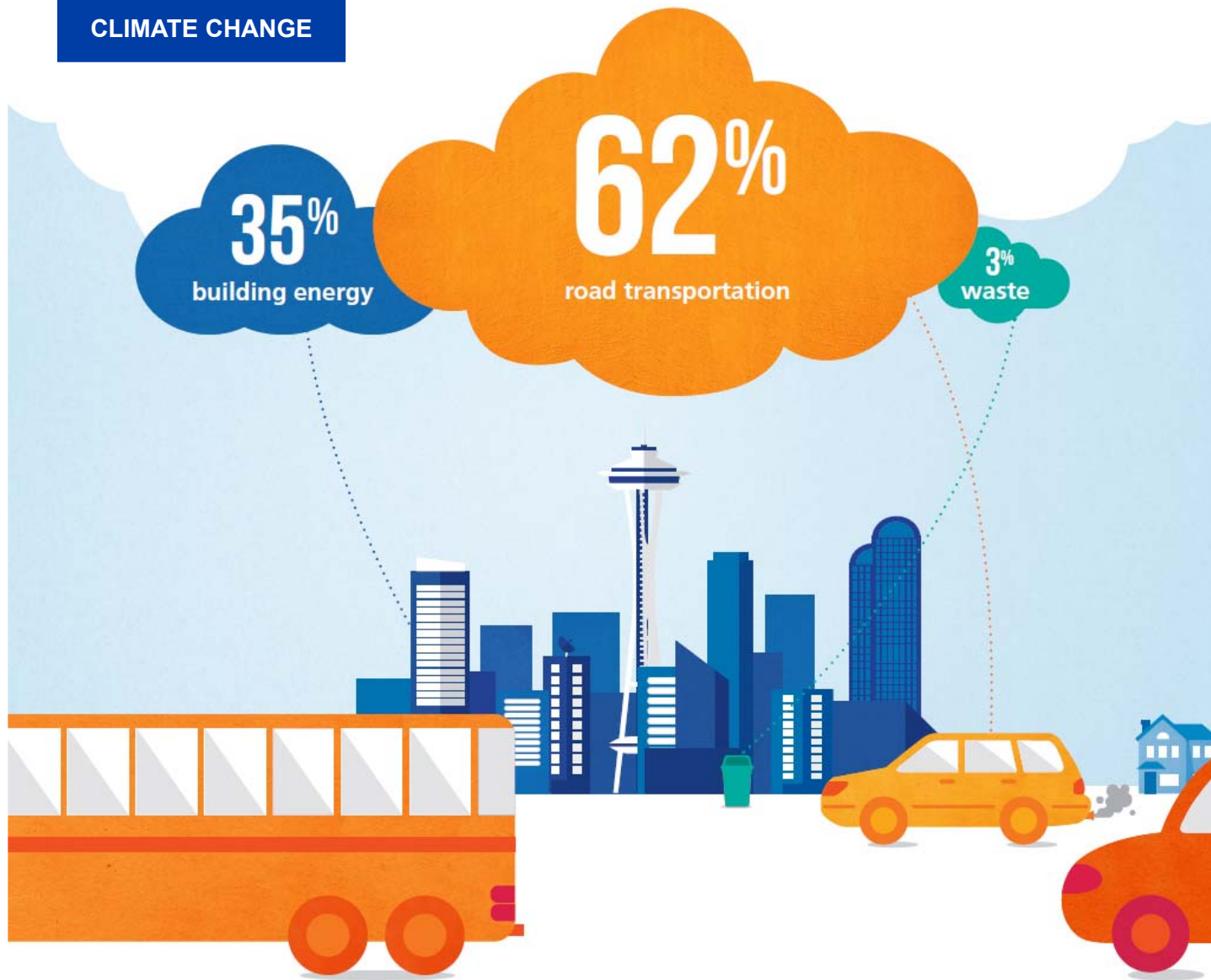


GROWING SUSTAINABLE COMMUNITIES

Partners to enhance the natural environment; protect and grow open space and the urban forest; strengthen regional food system; expand access to healthy fresh food; and contribute to overall livability and community health.



CLIMATE CHANGE



2005 - Seattle's first Climate Action Plan

2005 - Seattle City Light Becomes Carbon Neutral

2011 - Adopted Carbon Neutral Goal

2013 - Climate Action Plan

2018 - Mayor Durkan's Climate Strategy





BUILDINGS & ENERGY

Reduce energy use in homes (20%) and commercial buildings (10%) by 2030. Lead in City facilities with a 40% reduction by 2025.

ENERGY BENCHMARKING

Requires owners of non-residential and multifamily buildings (20,000 sf or larger) to track energy performance and annually report to the City of Seattle by April 1st of each year.

BUILDING TUNE-UPS

Ordinance adopted in 2016 to optimize energy and water performance through low- or no-cost actions related to building operations and maintenance, that generate an average of 10-15% in energy savings.

CITY FACILITIES

Reducing environmental impact of City facilities through new construction, major renovations, and operations. Seattle owns and manages some 650 buildings (10 million sf) and 110,000 acres of public land.

BUILDING PERFORMANCE STANDARDS

Currently conducting analysis, preliminary policy development, evaluation, and stakeholder engagement towards the creation of a Performance Standard for Existing Buildings. We are exploring emissions limit requirements by building type to achieve net-zero carbon by 2050 in the buildings sector.

- ✓ Since 2008, we've reduced energy use nearly 9% in homes and 3% in commercial buildings.
- ✓ From 2014-2017, buildings that benchmarked reduced energy use (5%) and GHG emissions (6%).
- ✓ More than 150 Tune-Ups underway in buildings 50,000 sf or more.
- ✓ Decreased energy use in City buildings by 15% between 2008-2017.

Convert 18,000 Oil-Heated Homes to Electric Heat Pumps by 2030

Potential to reduce GHG emissions 16-18% from residential sector.

Partnership with Seattle City Light, Office of Housing, and manufacturers - rebates & assistance.

Prevent future leaks and environmental damage; reduce pollution and costs.

- ✓ Converted over **400 homes** from oil heat to energy-efficient heat pumps since July 2017
- ✓ Saved more than **200,000** gallons of oil
- ✓ Reduced carbon emissions → **2,000+** MTCO₂e
- ✓ Launched **pilot to support low income households.**



OIL HEAT vs CLEAN HEAT

Oil furnaces burn heating oil that is similar to diesel fuel to heat the home.

Burning heating oil **pollutes our air.**

Heating oil costs are **expensive**, and all costs are usually **billed entirely at once** when the tank is filled.



Leaking oil tanks **pollute our soil and ground water**, and can cause expensive clean-up costs.

500 gallons

Heat pumps transfer heat from the air into or out of the house.

An electric heat pump is more than twice as efficient as an oil furnace and saves about **\$850 every year.**

Heat pumps also include **air-conditioning** and **air-filtration** providing year-round comfort.



Heat pumps run on **carbon neutral electricity** from Seattle City Light.



TRANSPORTATION ELECTRIFICATION

Citywide strategy to

Reduce the miles we need to drive for daily needs. Electrify cars, buses, trucks, ferries, and equipment to be zero-carbon.

LEAD BY EXAMPLE

Installed **300+ charging stations in City garages** to support **one of largest EV fleets in the country** (300+ plug-in; 500+ hybrid).

Eliminate 10% of City's car fleet.

Phase out use of fossil fuels in fleet vehicles.

ELECTRIC VEHICLE READINESS

Required new buildings to be EV-Ready, with wiring and outlets in parking stalls.

Install public charging and remove barriers for others to install charging infrastructure.

EVs comprised more than 10% of new vehicle registrations last year in Seattle!

HIGH MILEAGE FLEETS

Metro to add 120 all-electric buses by 2020, with a goal to transition to a zero-emission fleet.

Recology deployed Seattle's first electric garbage truck!

Electrify ride-share and ride-hail vehicles.

ADVANCING EQUITY & JUSTICE

Prioritize electric transit in environmental justice communities.

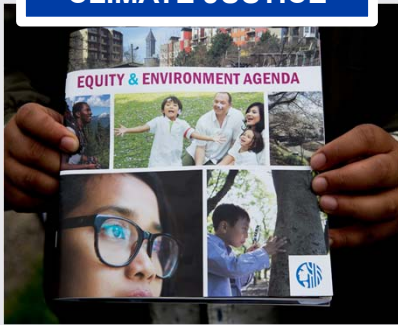
Increase EV access through financial and other tools.

Connect communities to workforce opportunities in the EV space.





ENVIRONMENTAL & CLIMATE JUSTICE



Partnership of the City, community, and private foundations to deepen Seattle's commitment to race and social justice in environmental work.

ENVIRONMENTAL JUSTICE COMMITTEE

Representative of Black, Indigenous, communities of color, immigrants, refugees, and people with low incomes.

Advise and design environmental justice solutions.

Implement in collaboration with communities of color and through community-based solutions.



STAFF CAPACITY

Leverage offerings of Seattle's Race & Social Justice Initiative.

Host environmental justice trainings for City staff and partners.

Utilize practices to evaluate/mitigate harm and foster co-benefits.

COMMUNITY LEADERSHIP

Awarded ~\$750,000 to communities most impacted by environmental issues to advance environmental justice & conservation.

Launched award-winning **Environmental Justice in Action** series.



Advancing environmental justice and equitable development in partnership with community.

PROBLEM

- 13-year life expectancy disparity
- Lower access to opportunity & higher displacement risk

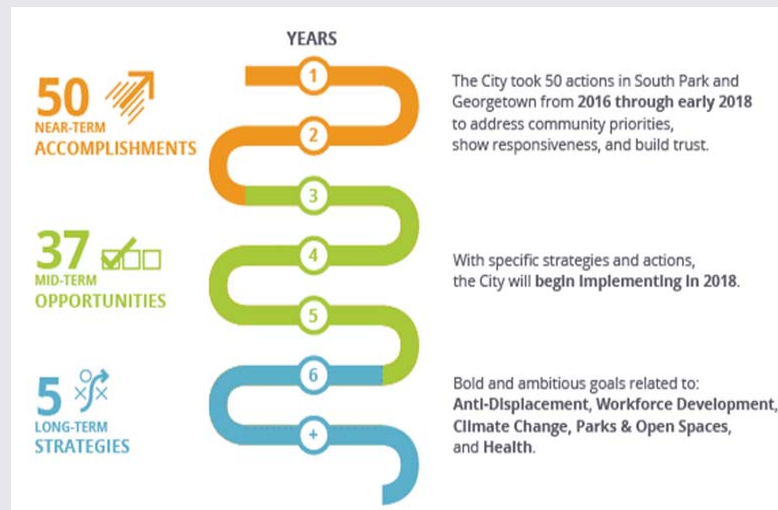
OPPORTUNITY

- Years of community planning
- City investments
- Equity & Environment, Equitable Development Initiatives

APPROACH

- Multidepartment and interdisciplinary work
- Racial equity outcomes

DUWAMISH VALLEY ACTION PLAN



Racial Equity Outcomes



Healthy Environment ♦ Parks & Open Space ♦ Mobility & Transportation ♦ Community Capacity ♦ Economic Opportunity ♦ Affordable Housing ♦ Public Safety

**FOOD POLICIES & PROGRAMS**

Fostering a healthy, local, equitable, and sustainable food system

FOOD ACTION PLAN

Citywide strategies and partnerships to increase **access to healthy food**, opportunities to **grow food in the city**, **strengthen the regional food economy**, and **prevent food-related waste**.

- **Prevent food waste** and connect surplus food to those in need.
- Connect meal programs and food purchasing to local farmers.
- Protect farmland through **King County's Transfer Development Rights** program.
- Support and expand **urban farming** and **community gardens**.

HEALTHY FOOD FOR ALL

Promote an equitable local food systems where everyone can access healthy food.

- Staff **Sweetened Beverage Tax Community Advisory Board** to advise Mayor and City Council on investments of the tax revenue.
- Work with **Seattle Public Schools** to expand fresh fruit and vegetable offerings from 9 to 19 elementary schools and reach high school students.
- Expand **Fresh Bucks** to increase access to healthy and affordable fresh food.





FRESH BUCKS

Fresh Bucks helps families and individuals stretch their tight food budget, incentivizes healthy food, and supports local businesses & farms.

Some 83,000 Seattle residents rely on SNAP (food stamps) to afford food. Many of our residents don't qualify for SNAP yet still struggle to afford healthy food.



FRESH BUCKS MATCH

Match on a purchase of fruits and vegetables with SNAP benefits at Fresh Bucks retailers.

FRESH BUCKS VOUCHERS

Eligible participants receive monthly Fresh Bucks vouchers, used like cash, to buy fruits and vegetables at Fresh Bucks retailers.

FRESH BUCKS PARTNERS

Community-based organizations, healthcare clinics, **41** farmers markets & farm stands, **6** neighborhood grocers, and **17** Safeway stores, and many other affiliated partners.



- ✓ Served ~30,000 Seattle & King County residents (2012-2018)
- ✓ \$1.9M spent on fruits & veggies
- ✓ \$2.0M economic impact from Fresh Bucks Match
- ✓ 61% Fresh Bucks customers get at least half of their produce with Fresh Bucks



URBAN FORESTRY

Trees for Seattle is the umbrella for all of Seattle's urban forestry efforts including community tree planting, tree maintenance, tree walks and education, tree ambassadors, and tree protections.

URBAN FORESTRY COMMISSION

Staff and support community leaders to advise the Mayor and City Council on policy and regulations governing the protection, management, and conservation of trees and vegetation in Seattle.

GREEN SEATTLE PARTNERSHIP

Community partnership to restore 2,500 acres of forested parkland by 2025, through volunteer work to remove invasive plants, plant new native trees and understory plants, and perform long term maintenance.

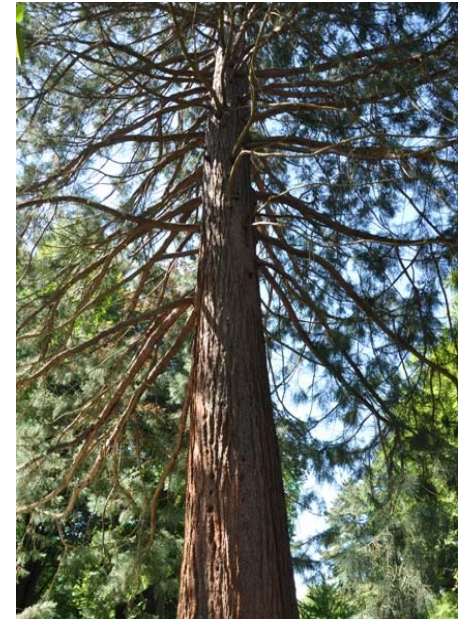
Close to 1,700 acres are in restoration—thanks to the help of 1M volunteer hours!



URBAN FOREST STEWARDSHIP/ MANAGEMENT PLAN

Citywide goals, strategies, and actions to align and leverage actions that foster a healthy & thriving urban forest.

- ✓ **Prioritize equity and engaging underrepresenting communities.**
- ✓ **Integrate new data (canopy cover, tree inventories, forthcoming heat island study).**
- ✓ **Promote human health connections.**
- ✓ **Connect to current challenges such as climate change, growth, and homelessness.**
- ✓ **Integrate stronger accountability and metrics.**



FEWER TREES in **EEI AREAS**





THANK YOU!

LYLIANNA ALLALA

Lylianna.allala@seattle.gov