

MICHAEL P. VICTORINO
Mayor.
MICHELE CHOUTEAU MCLEAN, AICP
Director
JORDAN E. HART
Deputy Director



DEPARTMENT OF PLANNING

COUNTY OF MAUI
ONE MAIN PLAZA
2200 MAIN STREET, SUITE 315
WAILUKU, MAUI, HAWAII 96793

August 11, 2020

RECEIVED

2020 AUG 13 PM 2:55

OFFICE OF THE MAYOR

Honorable Michael P. Victorino
Mayor, County of Maui
200 South High Street
Wailuku, Hawaii 96793

APPROVED FOR TRANSMITTAL

Michael P. Viti 8/14/20
Mayor Date

For Transmittal to:

Honorable Tamara Paltin, Chair, Planning and Sustainable Land Use Committee
Maui County Council
200 South High Street
Wailuku, Hawaii 96793

2020 AUG 17 AM 11:09
OFFICE OF THE
COUNTY COUNCIL

RECEIVED

Dear Chair Paltin:

**SUBJECT: CONDITIONAL PERMIT TO ESTABLISH AND OPERATE
THE HALEAKALA UPCOUNTRY MARKET AND FOOD
TRUCK IN THE R-0.5 RURAL ZONING DISTRICT
(PSLU-60) (CP 2018/0003)**

The Department of Planning (Department) is transmitting the subject PowerPoint presentation to the Planning and Sustainable Land Use Committee for your August 12, 2020 meeting. Accordingly, attached a flash drive containing the Department's PowerPoint Presentation to the Maui Planning Commission, dated December 10, 2019.

Thank you for your attention to this matter. Should you have any questions, please feel free to transmit them to the Department via transmittal through the Office of the Mayor.

Sincerely,

MICHELE MCLEAN, AICP
Planning Director

Attachment

xc: Clayton I. Yoshida, AICP, Planning Program Administrator
Livit U. Callentine, AICP, Staff Planner
Ana Lillis, Council Services
Project File

MCM:LUC:lk

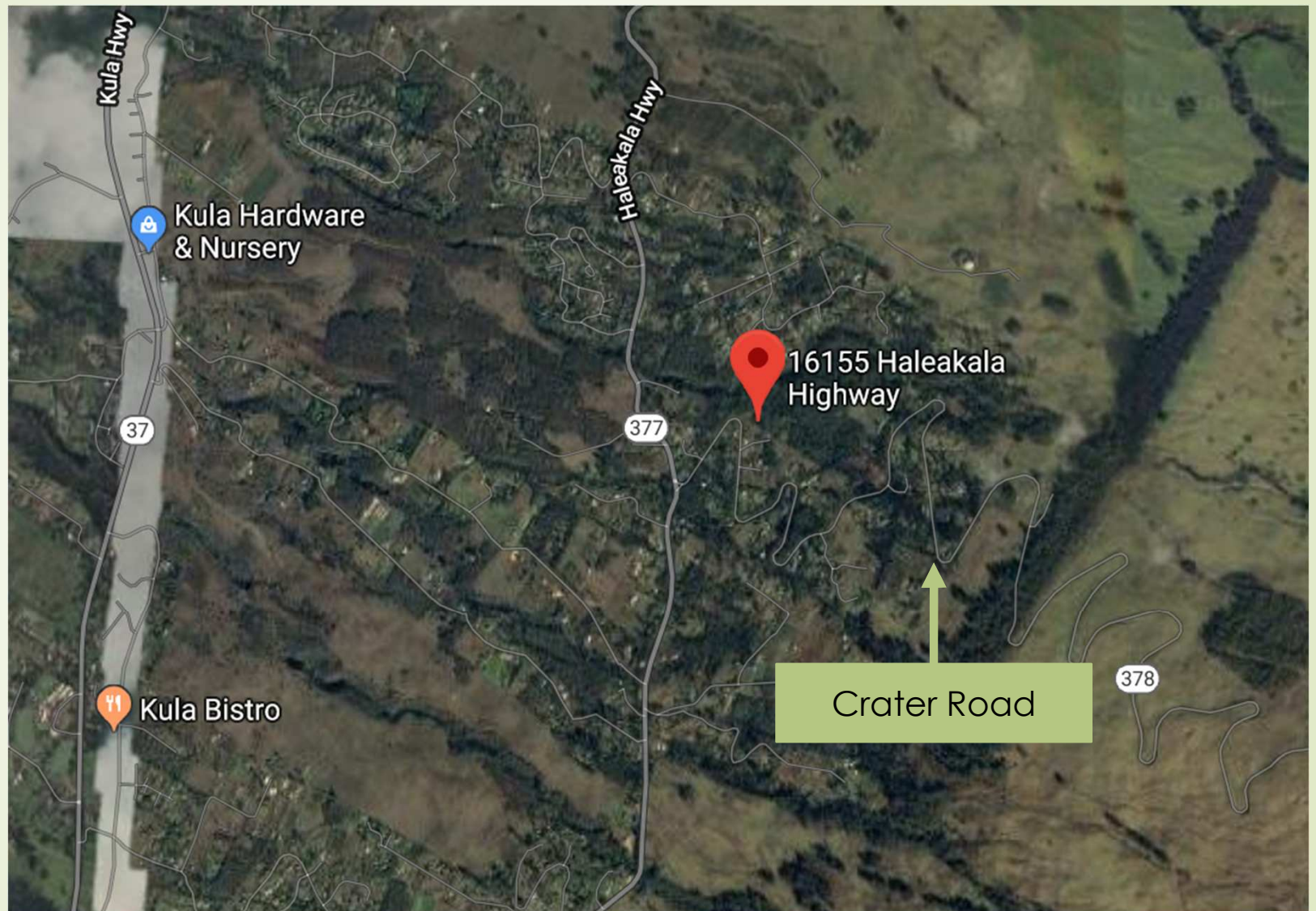
K:\WP_DOCS\Planning\CP\2018\0003_HaleakalaUpcountryMarket\County Council\TransmitToPSLU_10-Aug-2020.docx

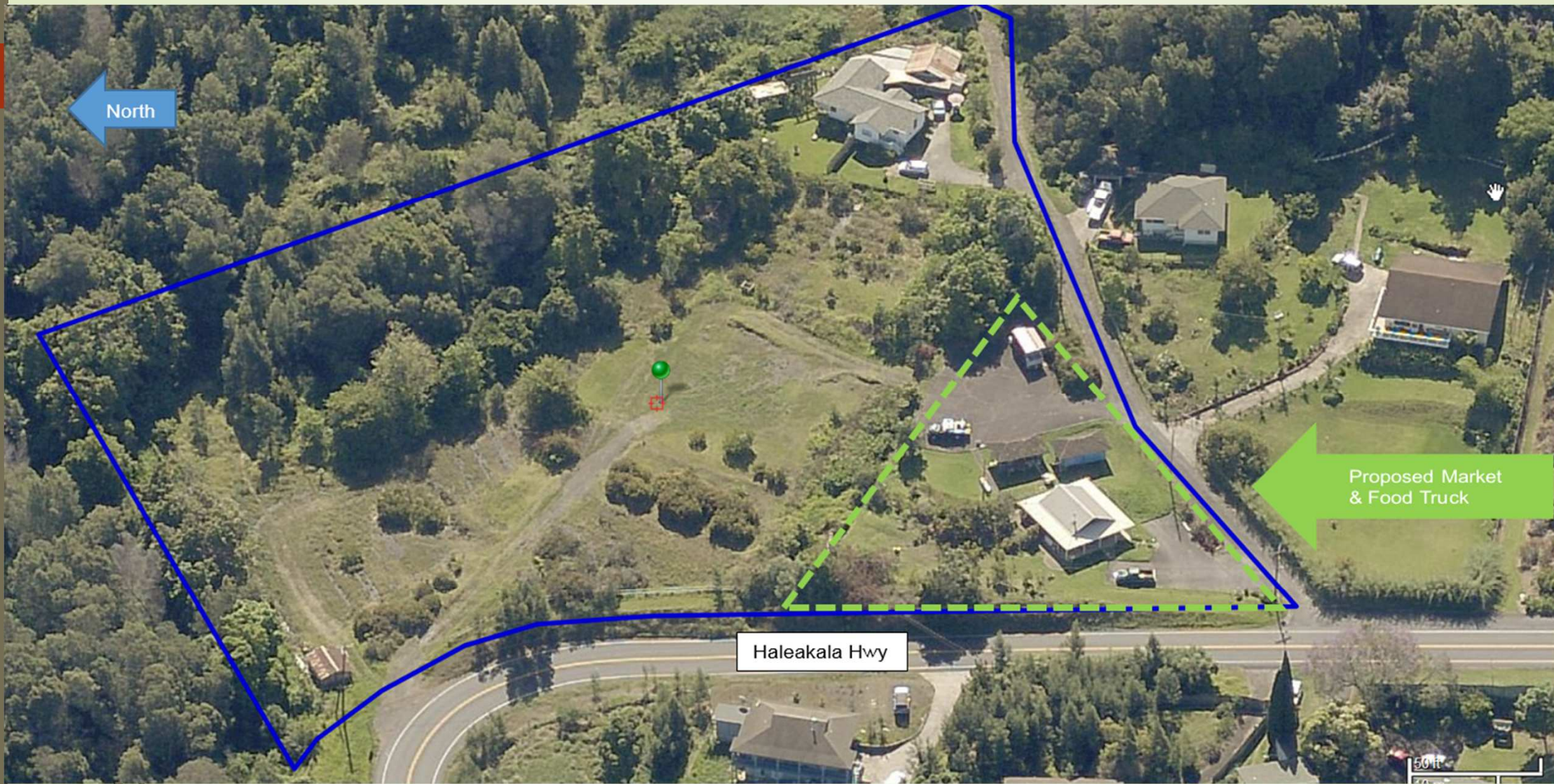
Haleakala Upcountry Market

Maui Planning Commission
December 10, 2019

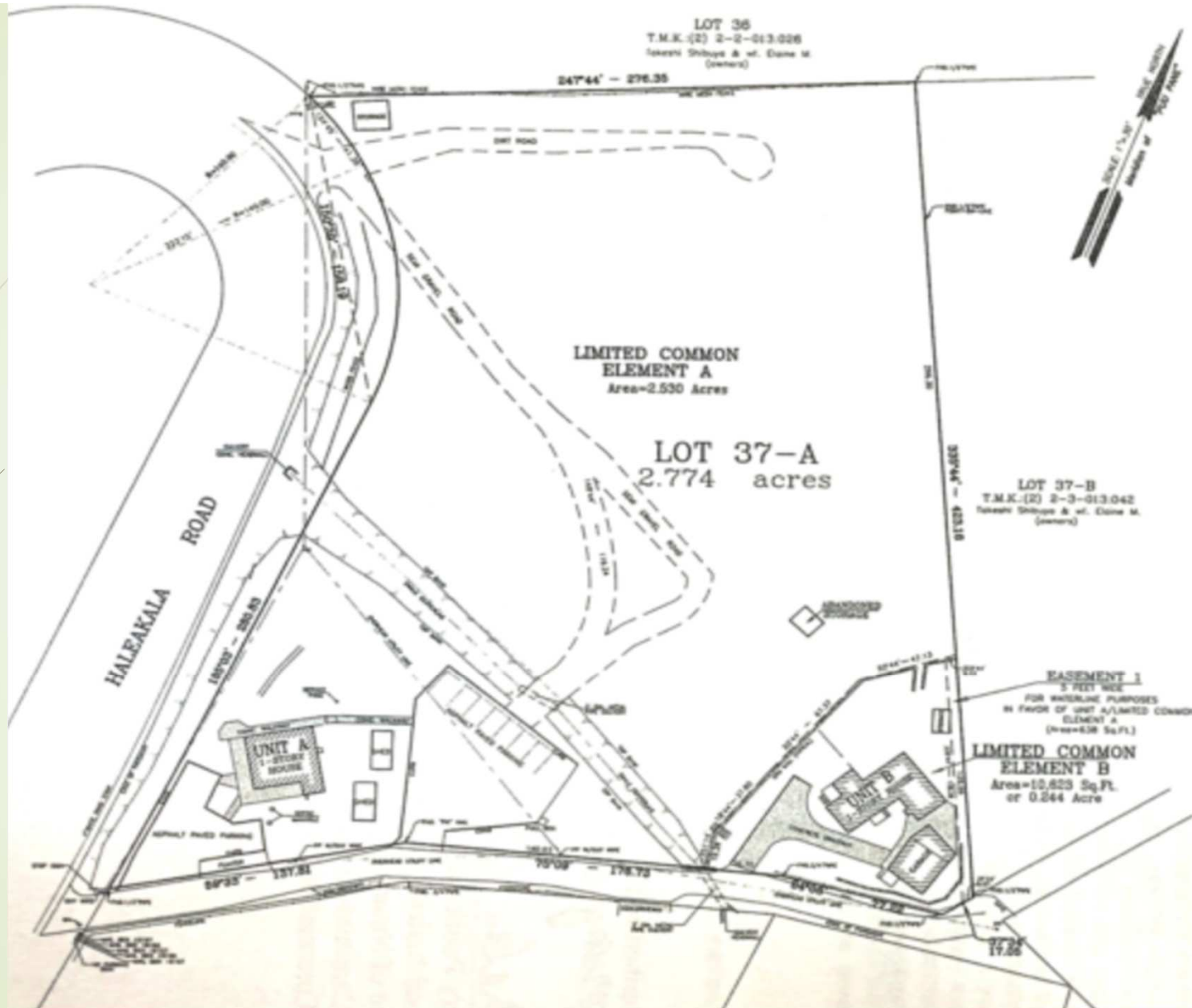
Department of Planning Presentation

Location Map





CPR Map



Photographs of Route to the Property







Parking Plan

