

PSLU Committee

From: Taogoshi, Heidi T.A. <Heidi.Taogoshi@doh.hawaii.gov>
Sent: Tuesday, September 22, 2020 6:16 PM
To: Ana L. Lillis; PS LU Committee
Cc: Nakaaki, Takako; Clarita Balala; Pang, Lorrin W.; Holokai, Priscilla Kalani
Subject: Re: Presentation email instructions - PS LU Committee 9/23/20
Attachments: County Council Mtg. .pptx

Chair Paltin,

Please see attached for current information on COVID Contact Investigations/Tracing by Maui District Health Office.

We look forward to learning from you and sharing what we are doing.

Thank you,

Heidi Taogoshi, RN, BSN

Public Health Nursing
Maui County Section Supervisor
54 High Street #301
Wailuku, HI 96793
808-984-8260
Fax: 808-243-5118

"Public Health Nurses listen and respond to community needs based on our professional knowledge and relationships with individuals, families, and communities."

Confidentiality Notice: This information and attachments are intended only for the use of the individual or entity to which it is addressed, and may contain information that is privileged and/or confidential. If the reader of this message is not the intended recipient, any dissemination, distribution, or copying of this communication is strictly prohibited and may be punishable under state and federal laws. If you have received this communication and/or attachments in error, please notify the sender via email immediately and destroy all electronic and paper copies.

From: Ana L. Lillis <Ana.Lillis@mauicounty.us>
Sent: Tuesday, September 22, 2020 11:46 AM
To: Taogoshi, Heidi T.A. <Heidi.Taogoshi@doh.hawaii.gov>
Cc: Nakaaki, Takako <takako.nakaaki@doh.hawaii.gov>; Clarita Balala <Clarita.Balala@mauicounty.us>
Subject: [EXTERNAL] Presentation email instructions - PS LU Committee 9/23/20

Aloha Heidi,

Please email your presentation addressed to Chair Paltin to the Committee email: pslu.committee@mauicounty.us

Please let me know if you'd like to practice screen sharing in BlueJeans before tomorrow's meeting, it is very similar to Teams and Zoom.

Thank you,

Ana Lillis
Legislative Analyst
Office of Council Services
Tel: (808) 270-7660
E: ana.lillis@mauicounty.us

Maui District Health Office (MDHO) Contact Investigations/Contact Tracing With Apps

Takako Nakaaki, Disease Investigator, Epi Specialist

Heidi Taogoshi, Public Health Nurse

9/24/20



Stopping COVID-19 in its tracks

Terms to Know



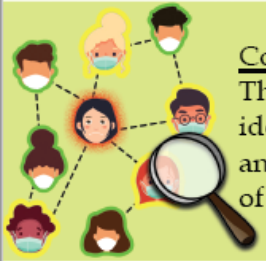
Case

A person who has tested positive for the COVID-19 virus



Close Contact

A person who was within 6 feet of a case for at least 15 minutes



Contact Tracing

The process of identifying, locating, and monitoring contacts of the Case



Isolation

Separates sick people with a contagious disease from people who are not sick



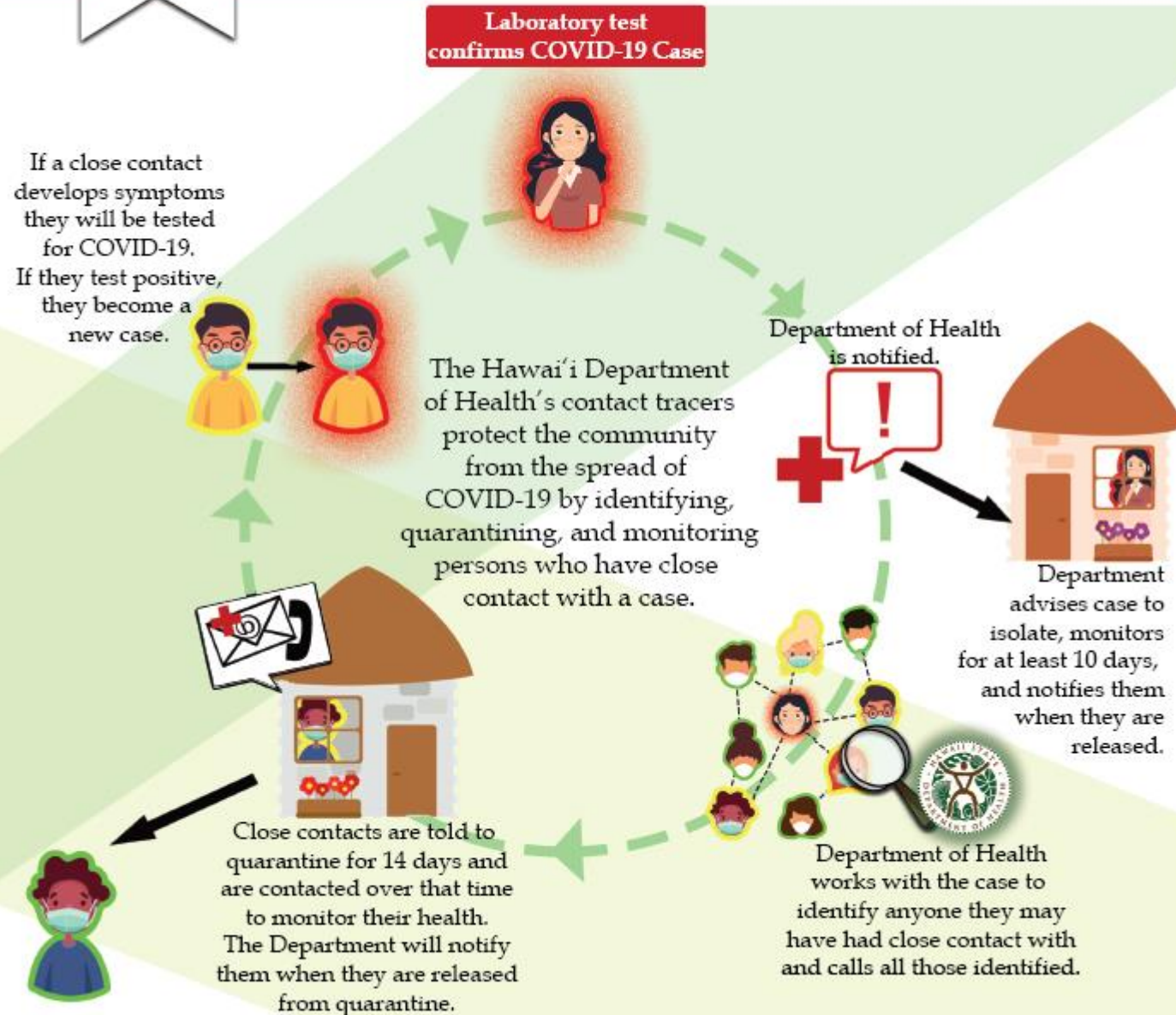
Quarantine

Separates and limits the movement of people who were in contact with a person who has a contagious disease in case they were infected and become sick



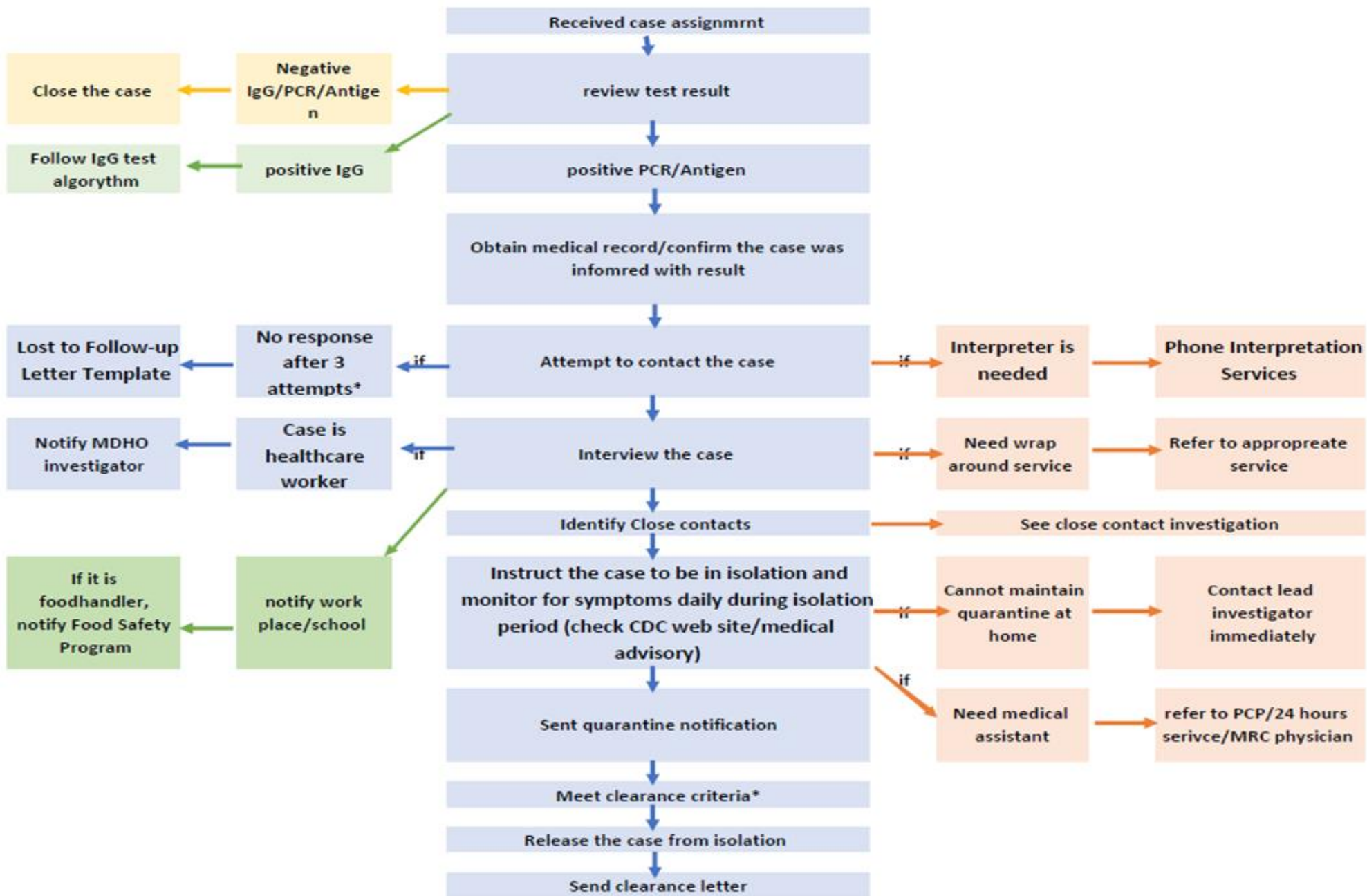
Stopping COVID-19 in its tracks

What is Contact Tracing?

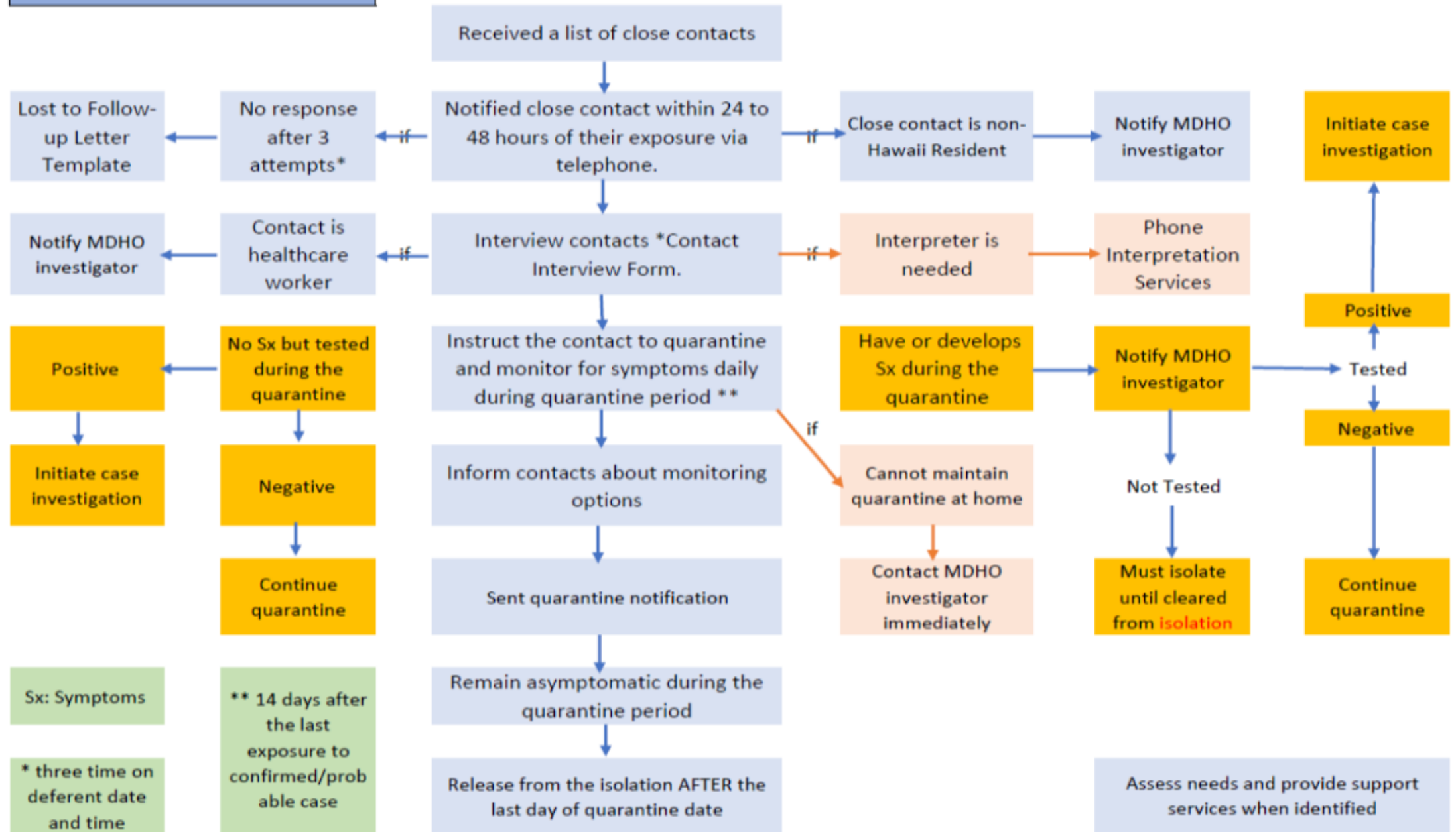


Current Contact Tracing in MDHO

- All confirmed and probable cases are contacted by an investigator within 24 hours of MDHO receiving notification
- Identified contacts are interviewed and educated about quarantine within 24 hours of identifying them and getting their contact information
- CT is being done the same for all 3 islands; we have team members on Maui (Hana), Molokai, Lanai
- If an investigator/contact tracer is not on the same island as the case they are assigned, they are integrated with larger MDHO team and are not doing contact tracing independently. We have daily team meetings and briefings. Every question or concern that they cannot address, gets relayed to the team.
- All have been trained on local resources for food, financial assistance, medical resources, testing, isolation/quarantine sites, etc.



Close Contacts Follow Up



Using technology/Apps

Pros

- Done timely
- Identify outbreaks quickly
- Less man power
- Empowers individuals
- More accurate than relying on memory

Cons

- Psychological/emotional support better with in person
- Cannot customize education and answer questions
- People don't want government "tracking" them
- Significant % of population need to download to be effective?

Questions to consider...

- Who is using app? Providers as well as public?
- Is it for case management or exposure notification or both?
- How does it connect to existing Hawaii statewide reporting system?
- What about visitors from out of state who use a different App?
- Can it include a county-wide standardized support resource list?
- Can app be used to increase public awareness on what to do when you are exposed?
- How to best utilize technology/apps to integrate and enhance current contact tracing operations being done by trained professionals?

Hawaii Department of Health Approved App

- AlohaSafe Story App – helps you recall where you have been
 - Available now through Apple
 - Coming soon for Google
- AlohaSafe Alert App – DOH can send alerts/exposure notifications

<https://www.wearealohasafe.org/>