

HFC Committee

From: Nakaaki, Takako <takako.nakaaki@doh.hawaii.gov>
Sent: Monday, September 28, 2020 5:48 PM
To: Lesley J. Milner; HFC Committee
Subject: Re: Healthy Families and Communities Meeting - Today
Attachments: County Council Mtg_ 9-24-2020.pptx

Aloha Lesley,

Thank you very much for having us at the meeting, and this is the presentation slide we presented last week. I apologize on delay, since I needed to go through one more step to be able to send this responding to your request.

Please contact me if you have questions.

Thank you very much,
Takako

Takako Nakaaki
Epidemiological Specialist
Maui District Health Office
Email: takako.nakaaki@doh.hawaii.gov
Phone: (808) 984-8213
Fax: (808) 243-5141

From: Lesley J. Milner <Lesley.Milner@mauicounty.us>
Sent: Thursday, September 24, 2020 5:01 PM
To: Nakaaki, Takako <takako.nakaaki@doh.hawaii.gov>
Subject: [EXTERNAL] RE: Healthy Families and Communities Meeting - Today

Aloha Takako,

Thank you so much for time and your presentation today! Could you send me a copy for the committee file, copying hfc.committee@mauicounty.us? Thank you again!

-Lesley

From: Lesley J. Milner
Sent: Thursday, September 24, 2020 1:18 PM
To: takako.nakaaki@doh.hawaii.gov
Subject: Healthy Families and Communities Meeting - Today

Aloha Takako,

Sorry again! The link for the meeting is <https://bluejeans.com/592650352>. You can connect to the meeting either via your browser (this option should be on the bottom of the page after you click the link) or you can download the BlueJeans app to your desktop or phone. I have also attached a copy of the agenda. The item you will be speaking on is HFC-70. Please let me know if there are additional details that would be helpful. Thank you!

-Lesley

Maui District Health Office (MDHO) Contact Investigations

Takako Nakaaki, Disease Investigator, Epi Specialist

Heidi Taogoshi, Public Health Nurse

9/24/20



Stopping COVID-19 in its tracks

Terms to Know



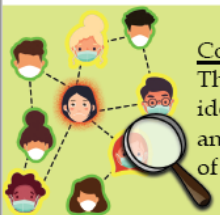
Case

A person who has tested positive for the COVID-19 virus



Close Contact

A person who was within 6 feet of a case for at least 15 minutes



Contact Tracing

The process of identifying, locating, and monitoring contacts of the Case



Isolation

Separates sick people with a contagious disease from people who are not sick



Quarantine

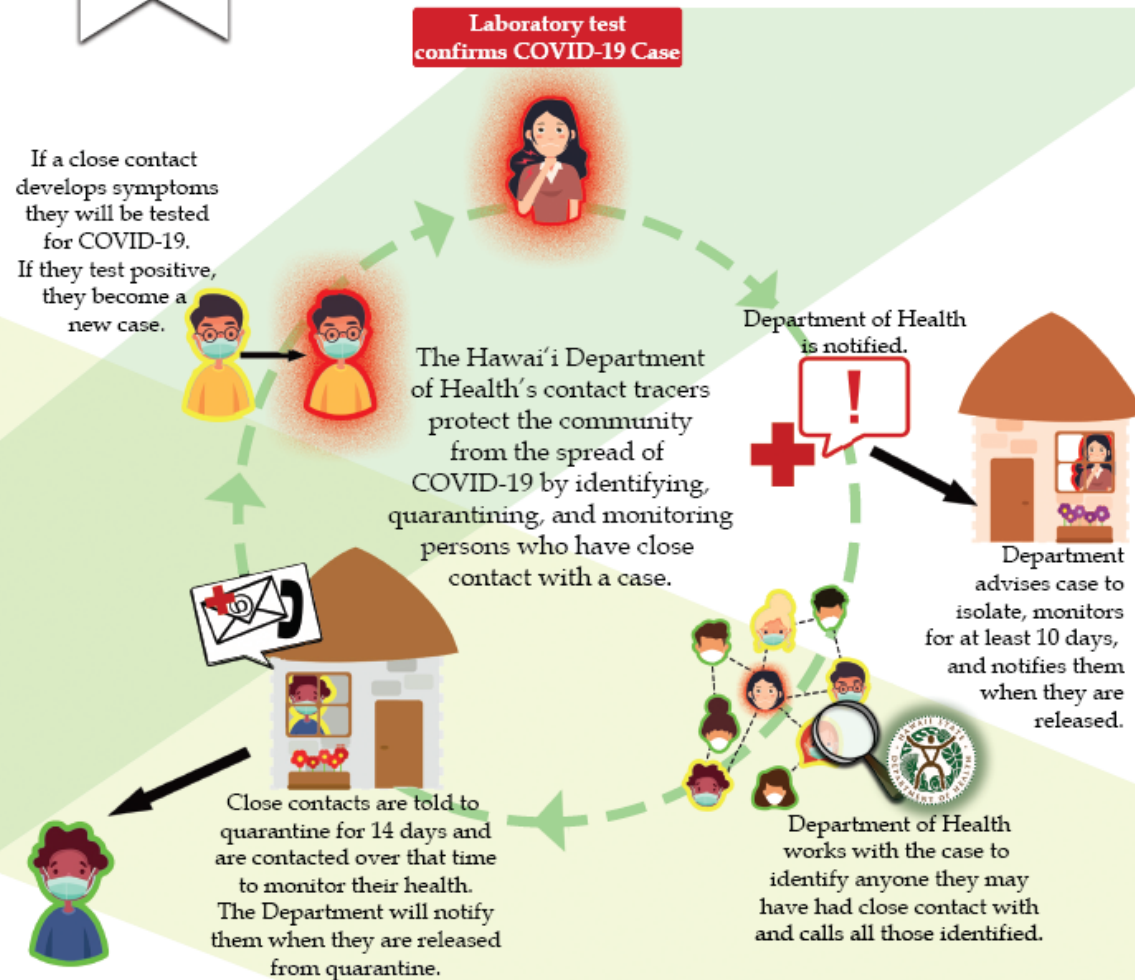
Separates and limits the movement of people who were in contact with a person who has a contagious disease in case they were infected and become sick

7/18/2020 - Disease Outbreak Control Division



Stopping COVID-19 in its tracks

What is Contact Tracing?



Current Contact Tracing (CT) in MDHO

- All confirmed and probable cases are contacted by an investigator within 24 hours of MDHO receiving notification
- Identified contacts are interviewed and educated about quarantine within 24 hours of identifying them and receiving their contact information
- CT is being done the same for all 3 islands; we have team members on Maui (Hana), Molokai, Lanai
- If an investigator/contact tracer is not on the same island as the case they are assigned, they are integrated with larger MDHO team and are not doing contact tracing independently. We have daily team briefings. Every question or concern they cannot address is relayed to the team for assistance.
- All have been trained on local resources for food, financial assistance, medical resources, testing, isolation/quarantine sites, etc.

Who should be involved in contact tracing ?

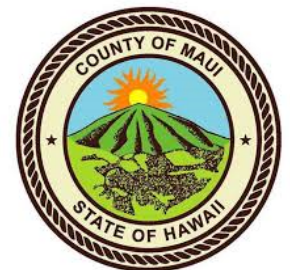
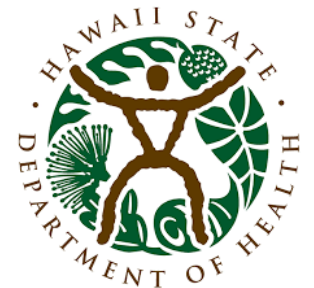
Contact tracing cannot be successful without involvement of every part of the community

State

County

Businesses/schools/agencies

Individuals in the community



Role of Maui District Health in Contact Tracing

- Locate cases in timely manner after positive test results become available
- Identify & locate close contacts in timely manner
- Provide guidance to cases & close contacts to remain in isolation or quarantine
- Provide or Refer to wrap around services to cases & close contacts to safely isolate or quarantine
- Provide guidance to businesses, schools and agencies associated with cases & close contacts
- Coordinate smooth communication with medical providers for timely report

Role of Community in Contact Tracing

Become a part of contact tracing team by:

- Understanding the risk
- Following guidance to be protected from infection
- Taking preventive measures at home and in community
- Following guidance to remain in isolation or quarantine
- Supporting friends, family & others in isolation or quarantine in your neighborhood and/or social network

Challenges in Contact Tracing

- Stigmatization in the community
- Not adequate ownership of COVID prevention/contact tracing among community
- Lack of isolation/quarantine sites due to lack of business being willing to take this role
- Lack of appreciation in community's efforts

Requests to County Councils

- Continuing education to community to be part of the contact tracing team as a Maui county community as a whole
- Promote community support to minimize stigmatization
- Establish list of wrap-around services available in the community to add to MDHO list (do you have a list?)
- Establish agreement with businesses & hotels to support their affected employees and guests

Questions?

Maui District Health Office - 984-8200

Disease Investigators – 984-8213

Public Health Nursing – 984-8260

hawaiiicovid19.com