

MICHAEL P. VICTORINO
Mayor

SCOTT K. TERUYA
Director

MAY-ANNE A. ALIBIN
Deputy Director



DEPARTMENT OF FINANCE
COUNTY OF MAUI
200 S. HIGH STREET
WAILUKU, MAUI, HAWAII 96793
www.mauicounty.gov

RECEIVED

2020 OCT -1 PM 1: 59

OFFICE OF THE MAYOR

October 01, 2020

Honorable Michael P. Victorino
Mayor, County of Maui
200 South High Street
Wailuku, Hawaii 96793

APPROVED FOR TRANSMITTAL

Michael P Victorino 10/1/20
Mayor Date

For Transmittal to:

Honorable Alice L. Lee, Chair
And Members of the Maui County Council
200 South High Street
Wailuku, Hawaii 96793

Dear Chair Lee and Maui County Council Members:

**SUBJECT: THE GORILLA FOUNDATION SUBDIVISION
WATERLINE EASEMENT "W-1"
TMK: (2) 4-3-001:017 POR**

Pursuant to Section 3.44.015 H. of the Maui County Code, this letter shall serve as notice that the County of Maui has accepted the dedication of a Waterline Easement by the Department of Water Supply – Engineering Division. The easement is identified by the subject Tax Map Key Number.

Please refer to enclosed Exhibit A for the Legal Description and Exhibit B for the Location of the Easement.

In addition, the Department of Water Supply has provided additional information pursuant to Section 3.44.015, F.2 of the Maui County Code.

- 1) **County Funds**: No County funds used.
- 2) **Purpose**: For waterline purposes, including the right to construct, reconstruct, install, maintain, operate, repair, replace, and remove such water pipelines and related facilities, including other equipment and appurtenances necessary or expedient for the proper maintenance,

COUNTY COMMUNICATION NO. 20-495

Waterline Easement W-1
October 1, 2020
Page 2

operation or repair of such pipelines installed within said easement in connection with the construction of the West Maui Source Development (also known as Kahana Well Development, DWS Project No. 15-04).

- 3) **Conformance**: Easement location and width is acceptable to the Department of Water Supply and is in conformance with County standards.

Thank you for your attention in this matter. Should you have any questions, please feel free to contact me at Ext. 7474.

Sincerely,



SCOTT K. TERUYA
Director of Finance

Enclosures
SKT/gmh

Cc: Jeffrey T. Pearson, Department of Water Supply Director

DESCRIPTION

THE GORILLA FOUNDATION SUBDIVISION EASEMENT W-1

(For Utility and Access Purposes)

Affecting Lot B-2 of The Gorilla Foundation Subdivision, being also portions of Grant 1166 to D. Baldwin, J.F. Pogue, and S.E. Bishop and Royal Patent 415, Land Commission Award 75 to Charles Cockett situated at Mahinahina 1, 2, and 3, and Mahinahina 4, Lahaina, Island and County of Maui, State of Hawaii.

Beginning at the Easterly corner of this easement, being also 2.36 feet East from the Southerly corner of Lot B-1 of The Gorilla Foundation Subdivision, the coordinates of said point of beginning referred to Government Survey Triangulation Station "MANINI" being:

8,310.77 feet North

3,503.30 feet East

and running by azimuths measured clockwise from True South:

1. 283° 10' 68.83 feet along Lot B-1 of The Gorilla Foundation Subdivision, being also the remainder of Grant 1166 to D. Baldwin, J.F. Pogue, and S.E Bishop;
2. 13° 10' 65.40 feet along the remainder of Lot B-2 of The Gorilla Foundation Subdivision, being also the remainder of Grant 1166 to D. Baldwin, J.F. Pogue, and S.E Bishop;
3. 101° 16' 42.66 feet along same;
4. Thence along same on a curve to the left with a radius of 45.00 feet the chord azimuth and distance being:
 90° 58' 16.09 feet;
5. 80° 40' 145.99 feet along same;
6. Thence along same on a curve to the right with a radius of 433.00 feet the chord azimuth and distance being:
 93° 45' 196.03 feet;
7. 106° 50' 277.53 feet along same;
8. 16° 50' 12.50 feet along same;
9. 106° 50' 27.00 feet along same;

10. 196° 50' 12.50 feet along same;
11. 106° 50' 154.28 feet along same;
12. Thence along same on a curve to the left with a radius of 1,487.00 feet the chord azimuth and distance being:
101° 45' 263.51 feet;
13. 96° 40' 1.93 feet along same;
14. 6° 40' 12.50 feet along same;
15. 96° 40' 27.00 feet along same;
16. 186° 40' 12.79 feet along same;
17. Thence along same on a curve to the right with a radius of 433.00 feet, the radial azimuth from the radius point to the beginning of curve being: 8° 47' 29";
the radial azimuth from the radius point to the end of curve being: 35° 32';
and the chord azimuth and distance being:
112° 09' 44.5" 200.27 feet;
18. 125° 32' 109.44 feet along same;
19. Thence along same on a curve to the right with a radius of 1,014.00 feet, the radial azimuth from the radius point to the beginning of curve being: 35° 32';
the radial azimuth from the radius point to the end of curve being: 42° 27' 05";
and the chord azimuth and distance being:
128° 59' 32.5" 122.36 feet;
20. 43° 12' 12.57 feet along same;
21. 133° 12' 27.00 feet along same;
22. 223° 12' 12.57 feet along same;
23. Thence along same on a curve to the right with a radius of 1,014.00 feet, the radial azimuth from the radius point to the beginning of curve being: 43° 58' 36";
the radial azimuth from the radius point to the end of curve being: 47° 44';
and the chord azimuth and distance being:
135° 51' 18" 66.47 feet;

- Page 3 of 8 Pages

39. Thence along same on a curve to the left with a radius of 407.00 feet the chord azimuth and distance being:
95° 12' 148.34 feet;
40. 84° 42' 179.70 feet along same;
41. 174° 42' 2.50 feet along same;
42. 84° 42' 78.82 feet along same;
43. 356° 42' 542.35 feet along same;
44. 86° 42' 29.93 feet along same;
45. 109° 12' 89.29 feet along same;
46. 118° 24' 200.41 feet along same;
47. 28° 24' 5.00 feet along same;
48. 118° 24' 100.00 feet along same;
49. 208° 24' 5.00 feet along same;
50. 118° 24' 83.80 feet along same;
51. 73° 24' 36.91 feet along same;
52. 26° 24' 28.48 feet along same;
53. 7° 54' 40.00 feet along same;
54. 97° 54' 5.00 feet along same;
55. 7° 54' 183.08 feet along same;
56. Thence along same on a curve to the left with a radius of 490.00 feet the chord azimuth and distance being:
5° 03' 48.73 feet;
57. 2° 12' 22.40 feet along same;
58. 314° 42' 45.13 feet along same;
59. 356° 16' 258.26 feet along same;
60. 348° 20' 302.50 feet along same;

61.	10° 20'	96.71 feet along same;
62.	23° 44'	668.00 feet along same;
63.	329° 32'	90.00 feet along the remainder of Lot B-2 of The Gorilla Foundation Subdivision, being also the remainders of Grant 1166 to D. Baldwin, J.F. Pogue, and S.E Bishop and Royal Patent 415, Land Commission Award 75 to Charles Cockett;
64.	315° 58'	33.95 feet along the remainder of Lot B-2 of The Gorilla Foundation Subdivision, being also the remainder of Royal Patent 415, Land Commission Award 75 to Charles Cockett;
65.	305° 44'	53.68 feet along same;
66.	283° 14'	152.85 feet along same;
67.	350° 44'	83.67 feet along same;
68.	320° 00'	58.70 feet along same;
69.	350° 44'	142.29 feet along same;
70.	80° 44'	30.00 feet along same;
71.	350° 44'	56.79 feet along same;
72.	58° 14'	57.93 feet along same;
73.	27° 14' 30"	1.47 feet along same;
74.	119° 07'	20.01 feet along Government (Crown) Land of Honokowai as shown on C.S.F. 4680;
75.	200° 00'	102.45 feet along the remainder of Lot B-2 of The Gorilla Foundation Subdivision, being also the remainder of Royal Patent 415, Land Commission Award 75 to Charles Cockett;
76.	170° 44'	155.26 feet along same;
77.	140° 00'	86.60 feet along same;
78.	114° 00'	100.00 feet along same;

79.	125° 44'	36.52 feet along same;
80.	135° 28'	95.88 feet along same;
81.	149° 32'	97.63 feet along the remainder of Lot B-2 of The Gorilla Foundation Subdivision, being also the remainders of Royal Patent 415, Land Commission Award 75 to Charles Cockett and Grant 1166 to D. Baldwin, J.F. Pogue, and S.E Bishop;
82.	203° 44'	77.21 feet along the remainder of Lot B-2 of The Gorilla Foundation Subdivision, being also the remainder of Grant 1166 to D. Baldwin, J.F. Pogue, and S.E Bishop;
83.	293° 44'	5.00 feet along same;
84.	203° 44'	480.00 feet along same;
85.	293° 44'	5.00 feet along same;
86.	203° 44'	90.18 feet along same;
87.	190° 20'	121.65 feet along same;
88.	168° 20'	271.29 feet along same;
89.	176° 16'	175.86 feet along same;
90.	152° 00'	104.35 feet along same;
91.	187° 54'	327.32 feet along same;
92.	206° 24'	72.85 feet along same;
93.	253° 24'	38.81 feet along same;
94.	298° 24'	100.00 feet along same;
95.	28 24'	5.00 feet along same;
96.	298° 24'	307.09 feet along same;
97.	289° 12'	83.71 feet along same;
98.	266° 42'	5.95 feet along same;

99. 176° 42' 541.67 feet along same;
100. 264° 42' 98.14 feet along same;
101. 174° 42' 16.00 feet along same;
102. 264° 42' 40.00 feet along same;
103. 354° 42' 18.50 feet along same;
104. 264° 42' 139.70 feet along same;
105. Thence along same on a curve to the right with a radius of 427.00 feet the chord azimuth
and distance being:
275° 12' 155.63 feet;
106. 285° 42' 119.54 feet along same;
107. Thence along same on a curve to the right with a radius of 420.00 feet the chord azimuth
and distance being:
291° 23' 83.19 feet;
108. 297° 04' 157.64 feet along same;
109. Thence along same on a curve to the left with a radius of 994.00 feet the chord azimuth
and distance being:
291° 49' 181.91 feet;
110. 286° 34' 138.31 feet along same;
111. Thence along same on a curve to the right with a radius of 407.00 feet the chord azimuth
and distance being:
302° 09' 218.67 feet;
112. 317° 44' 225.55 feet along same;
113. Thence along same on a curve to the left with a radius of 994.00 feet the chord azimuth
and distance being:
311° 38' 211.25 feet;
114. 305° 32' 109.44 feet along same;
115. Thence along same on a curve to the left with a radius of 413.00 feet the chord azimuth
and distance being:
291° 06' 205.88 feet;

116. 276° 40' 12.88 feet along same;
117. Thence along same on a curve to the right with a radius of 1,507.00 feet the chord azimuth and distance being:
281° 45' 267.05 feet;
118. 286° 50' 458.81 feet along same;
119. Thence along same on a curve to the left with a radius of 413.00 feet the chord azimuth and distance being:
273° 45' 186.98 feet;
120. 260° 40' 142.94 feet along same;
121. 193° 10' 52.90 feet along same to the point of beginning and containing an area of 3.918 Acres.

This work was prepared by me
or under my supervision.



FUKUMOTO ENGINEERING, INC.

Sharon Y. Toyama

Sharon Y. Toyama
Licensed Professional Land Surveyor
Certificate Number 13713
License Expires: 4/30/20

1721 Wili Pa Loop, Suite 203
Wailuku, Hawaii 96793
November 5, 2019

COM43B

MAP SHOWING EASEMENT W-1 OF THE GORILLA FOUNDATION SUBDIVISION

AFFECTING LOT B-2 OF THE GORILLA FOUNDATION SUBDIVISION, BEING ALSO PORTIONS OF GRANT 1166 TO D. BALDWIN, J.F. POGUE, AND S.E. BISHOP AND ROYAL PATENT 415, LAND COMMISSION AWARD 75

MAHINAHINA 1, 2, & 3, MAHINAHINA 4, LAHAINA, MAUI, HAWAII

SCALE: 1 IN.=500 FT.

DATE: NOVEMBER 5, 2019

PROJECT SITE

PREPARED FOR:
COUNTY OF MAUI
200 S. HIGH STREET
WAILULU, HAWAII 96793

OWNER:
MAUI LAND &
PINEAPPLE COMPANY, INC.
200 VILLAGE ROAD
LAHAINA, HAWAII 96761

PREPARED BY:
FUKUMOTO ENGINEERING, INC.
1721 WILU PA LOOP, SUITE 203
WAILUKU, HAWAII 96793
PHONE: (808) 242-8611
EMAIL: office@femaui.com
WEBSITE: www.femaui.com

NOTES:

1. ALL AZIMUTHS AND RECORD COORDINATES REFER TO GOVERNMENT SURVEY TRIANGULATION STATION "MANINI"Δ.
2. EASEMENT W-1 (3.918 ACS.) IS AN EASEMENT FOR WATERLINE AND ACCESS PURPOSES AFFECTING LOT B-2 OF THE GORILLA FOUNDATION SUBDIVISION IN FAVOR OF DEPARTMENT OF WATER SUPPLY, COUNTY OF MAUI. SEE FINAL SUBDIVISION "THE GORILLA FOUNDATION SUBDIVISION", SUBDIVISION FILE NO. 4.1019.

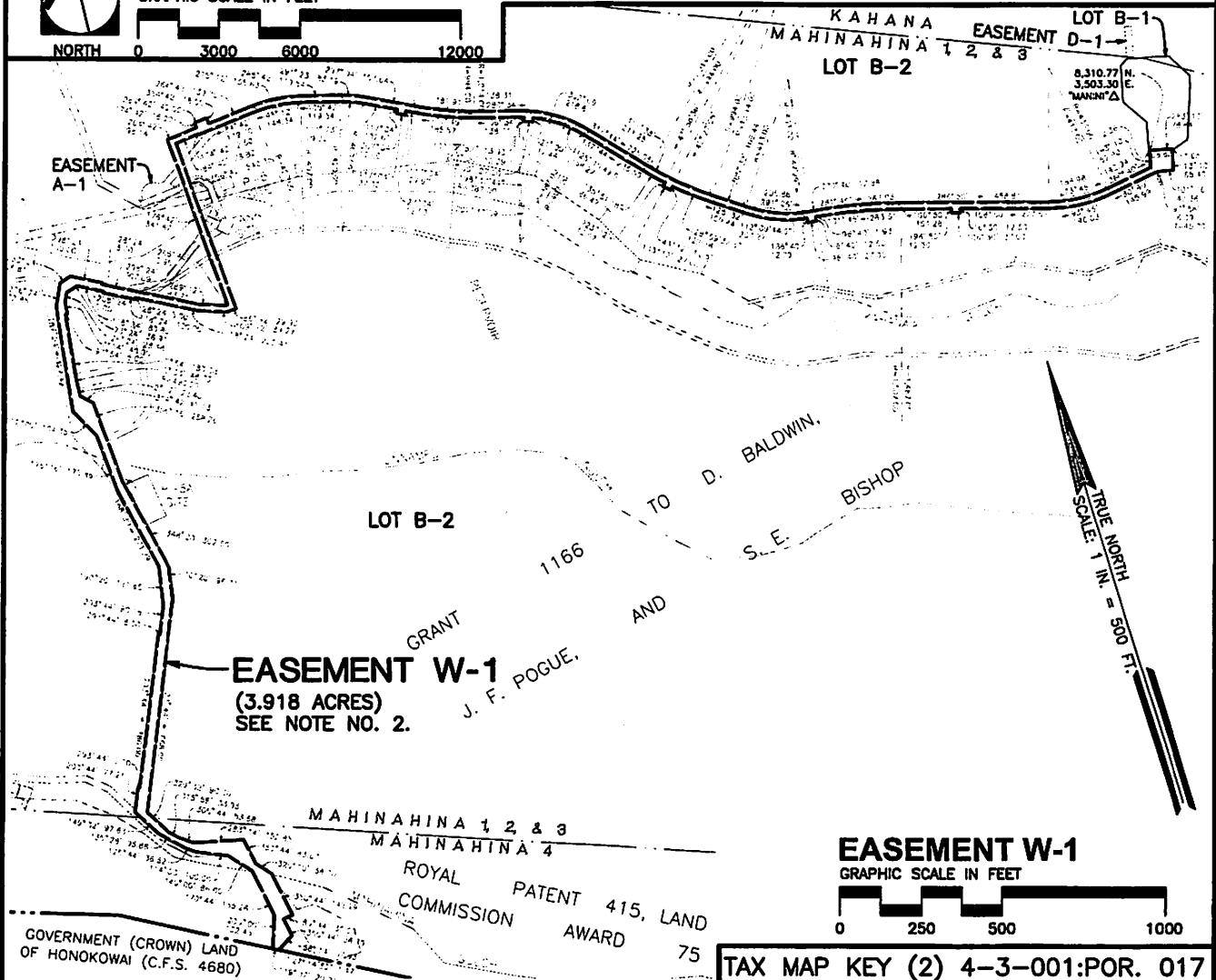


VICINITY MAP

GRAPHIC SCALE IN FEET



NORTH



EASEMENT W-1

GRAPHIC SCALE IN FEET



TAX MAP KEY (2) 4-3-001:POR. 017

EXHIBIT "B"