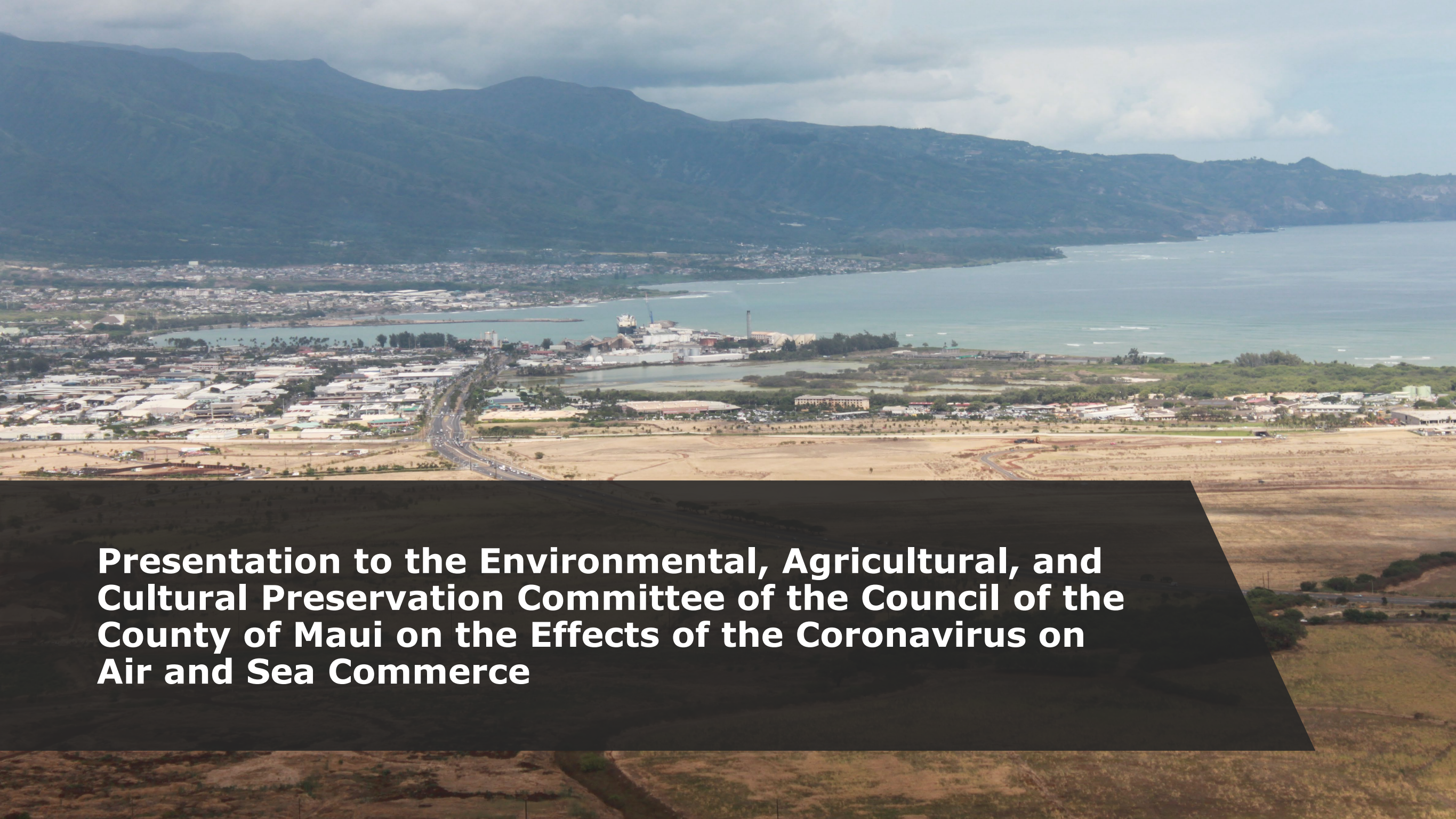


## **EACP Committee**

---

**From:** Araki-Regan, Lynn <Lynn.Araki-Regan@hawaii.gov>  
**Sent:** Tuesday, October 20, 2020 1:52 PM  
**To:** EACP Committee  
**Subject:** EACP-45 Presentation  
**Attachments:** 20201020 Maui County Council.pdf

See attached.



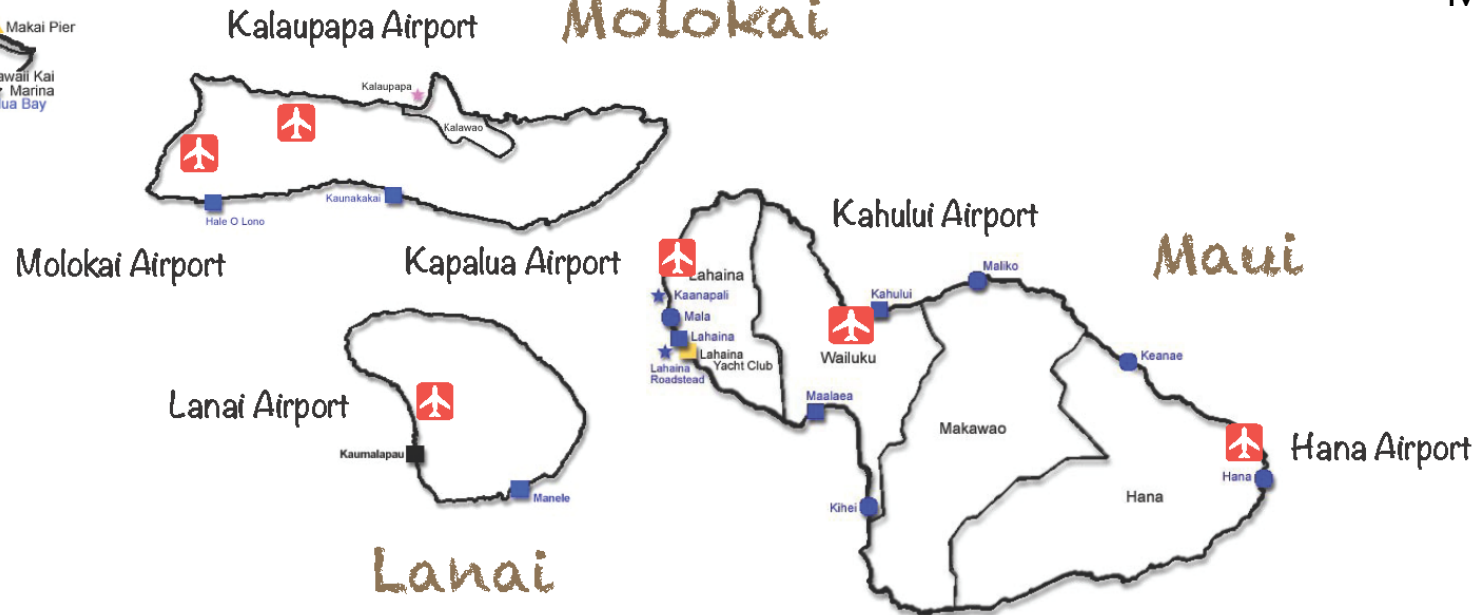
**Presentation to the Environmental, Agricultural, and Cultural Preservation Committee of the Council of the County of Maui on the Effects of the Coronavirus on Air and Sea Commerce**



# Topics

---

- Preparation for screening at Airports and pre-travel testing alternative
- Discussions with cruise operators and coordination of safety plans
- Suspension of 'Ohana by Hawaiian flights between HNL, MKK, and LNY



## Maui County facilities managed by HDOT

- Kahului Airport (OGG)
- Kahului Harbor
- Kapalua Airport (JHM)
- Hana Airport (HNM)
- Lanai Airport (LNY)
- Kaunapapa Harbor
- Molokai Airport (MKK)
- Kalaupapa Airport (LUP)
- Kalaupapa Harbor

# COVID-19 Mitigation at Airports

- Thermal screening
  - Phase 2 was completed in August and included installation of cameras at OGG to detect people with a temperature of 100.4 degrees and above.
  - This helps streamline the screening process for arrivals and reduces the amount of time people congregate at the gates.
  - ARFF personnel are trained on procedures should a monitor alert.
- Safe Travels Hawaii
  - HDOT continues to support the coordinated efforts to provide a pre-travel testing alternative to the 14-day quarantine for incoming passengers.





Recipient:

Department of Transportation

**Total Amount Received: \$235,105,847**

Breakdown of Awards:

Award Name	Liquidation Date	Award Amount	Remaining Available Balance
CARES Act: Airport Improvement Program	5/3/2024	\$133,334,924.00	\$76,377,025.00
CARES Act: FTA Nonurbanized Formula	12/31/2023	\$8,906,600.00	\$8,906,600.00
CARES Act: FTA Urbanized Formula	12/31/2022	\$7,864,323.00	\$7,864,323.00
Coronavirus Relief Fund-airport screening & health security	12/31/2020	\$85,000,000.00	\$59,010,227.00

**CARES ACT**

# Cruise Industry

- There are no scheduled cruise bookings in Hawaii for the remainder of 2020.
- The cruise industry has submitted safety protocol plans, including pre-boarding screening and enhanced sanitation, to the CDC.
- HDOT Harbors Division is continuing discussions with the cruise lines to align state and county requirements for a safe re-start of cruise operations.



# Service to MKK, LNY

- OCT 9 – Hawaiian Airlines announced the temporary suspension of 'Ohana by Hawaiian passenger and cargo services effective Nov. 1
- According to our data, in September, 'Ohana by Hawaiian flights averaged 5 passengers per flight on 2-3 flights to each island.
- Mokulele routes between HNL and MKK and LNY continue and the carrier has increased flights.
- HDOT will monitor the demand and will communicate with our partners should adjustments be needed.

