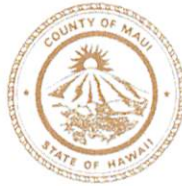


MICHAEL P. VICTORINO
Mayor

SCOTT K. TERUYA
Director

MAY-ANNE A. ALIBIN
Deputy Director



DEPARTMENT OF FINANCE
COUNTY OF MAUI
200 S. HIGH STREET
WAILUKU, MAUI, HAWAII 96793
www.mauicounty.gov

RECEIVED
2020 NOV 25 AM 9:19
OFFICE OF THE MAYOR

November 24, 2020

Honorable Michael P. Victorino
Mayor, County of Maui
200 South High Street
Wailuku, Hawaii 96793

APPROVED FOR TRANSMITTAL

Michael P. Victorino 11/25/20
Mayor Date

For Transmittal to:

Honorable Alice L. Lee, Chair
And Members of the Maui County Council
200 South High Street
Wailuku, Hawaii 96793

Dear Chair Lee and Maui County Council Members:

SUBJECT: KEHALANI MODULES 12 & 13
LOTS 168 - 173
WATERLINE EASEMENTS
W-1 THROUGH W-6
TMK: (2) 3-5-001:108 POR & 109 POR

Pursuant to Section 3.44.015 H. of the Maui County Code, this letter shall serve as notice that the County of Maui has accepted the dedication of (6) Six Waterline Easements by the Department of Water Supply – Engineering Division. The easements are identified by the subject Tax Map Key Number.

Please refer to enclosed Exhibit A for the Legal Descriptions and Exhibit B for the Location of the Easements.

In addition, the Department of Water Supply has provided additional information pursuant to Section 3.44.015, F.2 of the Maui County Code.

- 1) **County Funds:** No County funds used.
- 2) **Purpose:** For access to water meter and waterline purposes, including other equipment and appurtenances necessary or expedient for the

RECEIVED
2020 NOV 27 AM 9:04
OFFICE OF THE
COUNTY CLERK

COUNTY COMMUNICATION NO. 20-588

proper maintenance, operation or repair of such water meter or pipelines installed within said Easement Area in connection with the construction of the Kehalani Modules 12 & 13 Subdivision, Subdivision File No. 3.2387, also known as the Anuheha Subdivision

- 3) **Conformance**: Easement locations and widths are acceptable to the Department of Water Supply and are in conformance with County standards.

Thank you for your attention in this matter. Should you have any questions, please feel free to contact me at Ext. 7474.

Sincerely,



SCOTT K. TERUYA
Director of Finance

Enclosures
SKT/gmh

Cc: Jeffrey T. Pearson, Department of Water Supply Director

EXHIBIT "A"

Description of Easements

"W-1" (Lot 168), "W-2" (Lot 169), "W-3" (Lot 170), "W-4" (Lot 171, "W-5" (Lot 172), and "W-6" (Lot 173)

**Kehalani Modules 12 and 13 Subdivision
Description of Lot 168 (Lā'au Loke Loop)
Easement "W-1"**

Land situated on the westerly side of Honoapiilani Highway
(F.A.P. No. 13-G) at Wailuku, Maui, Hawaii

Being a portion of Grant 483 to E. Bailey.

Beginning at a point at the most southerly corner of this lot,
being also the westerly corner of Lot 1 of Kehalani Modules 12 and 13
Subdivision, the coordinates of said point of beginning referred to
Government Survey Triangulation Station "LUKE" being 2,500.68 feet
South and 5,233.55 feet West and running by azimuths measured
clockwise from True South:

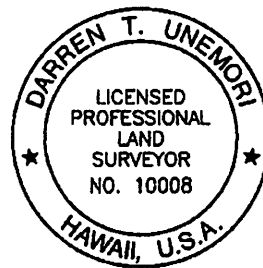
1. Thence along the easterly side of Kehalani Mauka Parkway on a
curve to the right, with the
point of curvature azimuth from
the radial point being:
68° 32' 44", and the point of
tangency azimuth from the
radial point being:
72° 43' 16", having a radius of
1,397.40 feet, the chord
azimuth and distance being:
160° 38' 101.82 feet to a
point;
2. Thence along Lot 165 of Kehalani Modules 12 and 13 Subdivision,
being also along the remainder
of Grant 483 to E. Bailey on a
curve to the left, with the
point of curvature azimuth from
the radial point being:
72° 43' 16", and the point of
tangency azimuth from the
radial point being:
340° 38', having a radius of
25.00 feet, the chord azimuth
and distance being:
296° 40' 38" 35.99 feet to a
point;
3. 250° 38' 6.42 feet along same to a point;

4. Thence along same on a curve to the left, having a radius of 50.00 feet, the chord azimuth and distance being:
211° 56' 30" 62.51 feet to a point;
5. 173° 15' 57.68 feet along same to a point;
6. Thence along same on a curve to the left, having a radius of 1,475.00 feet, the chord azimuth and distance being:
169° 27' 30" 195.08 feet to a point;
7. 165° 40' 127.46 feet along same to a point;
8. Thence along same on a curve to the left, having a radius of 2,839.79 feet, the chord azimuth and distance being:
159° 30' 610.11 feet to a point;
9. 153° 20' 218.21 feet along same to a point;
10. Thence along same on a curve to the left, having a radius of 50.00 feet, the chord azimuth and distance being:
112° 07' 30" 65.88 feet to a point;
11. 70° 55' 17.06 feet along same to a point;
12. Thence along same on a curve to the left, with the point of curvature azimuth from the radial point being:
160° 55', and the point of tangency azimuth from the radial point being:
67° 44' 58", having a radius of 25.00 feet, the chord azimuth and distance being:
24° 19' 59" 36.32 feet to a point;

13. Thence along the easterly side of Kehalani Mauka Parkway on a curve to the right, with the point of curvature azimuth from the radial point being: $67^{\circ} 44' 58''$, and the point of tangency azimuth from the radial point being: $74^{\circ} 05' 02''$, having a radius of 930.00 feet, the chord azimuth and distance being: $160^{\circ} 55'$ 102.77 feet to a point;
14. Thence along Lot 22 of Kehalani Modules 12 and 13 Subdivision, being also along the remainder of Grant 483 to E. Bailey on a curve to the left, with the point of curvature azimuth from the radial point being: $74^{\circ} 05' 02''$, and the point of tangency azimuth from the radial point being: $340^{\circ} 55'$, having a radius of 25.00 feet, the chord azimuth and distance being: $297^{\circ} 30' 01''$ 36.32 feet to a point;
15. $250^{\circ} 55'$ 17.06 feet along same to a point;
16. Thence along Lots 22 and 21 of Kehalani Modules 12 and 13 Subdivision, being also along the remainder of Grant 483 to E. Bailey on a curve to the right, having a radius of 100.00 feet, the chord azimuth and distance being: $292^{\circ} 07' 30''$ 131.76 feet to a point;
17. $333^{\circ} 20'$ 218.21 feet along Lots 21, 20, 19 and 18 of Kehalani Modules 12 and 13 Subdivision, being also along the remainder of Grant 483 to E. Bailey to a point;

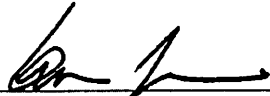
18. Thence along Lots 18, 17, 16, 15, 14, 13, 12, 11, 10, 9, 8 and 169 ('Ohe Naupaka Street) of Kehalani Modules 12 and 13 Subdivision, being also along the remainder of Grant 483 to E. Bailey on a curve to the right, having a radius of 2,889.79 feet, the chord azimuth and distance being: 339° 30' 620.85 feet to a point;
19. 345° 40' 127.46 feet along Lots 169 ('Ohe Naupaka Street), 7 and 6 of Kehalani Modules 12 and 13 Subdivision, being also along the remainder of Grant 483 to E. Bailey to a point;
20. Thence along Lots 6, 5, 4 and 3 of Kehalani Modules 12 and 13 Subdivision, being also along the remainder of Grant 483 to E. Bailey on a curve to the right, having a radius of 1,525.00 feet, the chord azimuth and distance being: 349° 27' 30" 201.69 feet to a point;
21. 353° 15' 57.68 feet along Lots 3 and 2 of Kehalani Modules 12 and 13 Subdivision, being also along the remainder of Grant 483 to E. Bailey to a point;
22. Thence along Lots 2 and 1 of Kehalani Modules 12 and 13 Subdivision, being also along the remainder of Grant 483 to E. Bailey on a curve to the right, having a radius of 100.00 feet, the chord azimuth and distance being: 31° 56' 30" 125.03 feet to a point;

23. 70° 38' 6.42 feet along Lot 1 of Kehalani Modules
 12 and 13 Subdivision, being
 also along the remainder of
 Grant 483 to E. Bailey to a
 point;
24. Thence along same on a curve to the left, with the point of
 curvature azimuth from the
 radial point being:
 160° 38', and the point of
 tangency azimuth from the
 radial point being:
 68° 32' 44", having a radius of
 25.00 feet, the chord azimuth
 and distance being:
 24° 35' 22" 35.99 feet to the
 point of beginning and
 containing an Area of
 75,752 Square Feet.



WARREN S. UNEMORI ENGINEERING, INC.

Wells Street Professional Center
2145 Wells Street, Suite 403
Wailuku, Maui, Hawaii 96793
March 19, 2020

By:  4/30/22 Exp.
Licensed Professional Land Surveyor
Certificate No. 10008

1: Propata Decoy South Survey Descriptions Desc. of Lot 149 rev2.doc

**Kehalani Modules 12 and 13 Subdivision
Description of Lot 169 (`Ohe Naupaka Street)
Easement "W-2"**

Land situated on the westerly side of Honoapiilani Highway
(F.A.P. No. 13-G) at Wailuku, Maui, Hawaii

Being a portion of Grant 483 to E. Bailey.

Beginning at a point at the southwesterly corner of this lot,
being also the northwesterly corner of Lot 7 of Kehalani Modules 12
and 13 Subdivision the coordinates of said point of beginning
referred to Government Survey Triangulation Station "LUKE" being
2,048.07 feet South and 5,204.38 feet West and running by azimuths
measured clockwise from True South:

1. 165° 40' 69.58 feet along Lot 168 (Lā`au Loke Loop)
of Kehalani Modules 12 and 13
Subdivision, being also along
the remainder of Grant 483 to
E. Bailey to a point;
2. Thence along same on a curve to the left, with the point of
curvature azimuth from the
radial point being:
255° 40', and the point of
tangency azimuth from the
radial point being:
255° 04' 07", having a radius
of 2,889.79 feet, the chord
azimuth and distance being:
165° 22' 3.5" 30.16 feet to a
point;

3. Thence along Lot 8 of Kehalani Modules 12 and 13 Subdivision, being also along the remainder of Grant 483 to E. Bailey on a curve to the left, with the point of curvature azimuth from the radial point being: 75° 04' 07", and the point of tangency azimuth from the radial point being: 345° 40', having a radius of 25.00 feet, the chord azimuth and distance being: 300° 22' 3.5" 35.17 feet to a point;
4. 255° 40' 3.42 feet along same to a point;
5. Thence along Lots 8 and 38 of Kehalani Modules 12 and 13 Subdivision, being also along the remainder of Grant 483 to E. Bailey on a curve to the right, having a radius of 525.00 feet, the chord azimuth and distance being: 262° 50' 130.99 feet to a point;
6. 270° 00' 82.56 feet along Lots 38 and 171 (Pua Kalaunu Loop) of Kehalani Modules 12 and 13 Subdivision, being also along the remainder of Grant 483 to E. Bailey to a point;
7. Thence along Lots 171 (Pua Kalaunu Loop) and 54 of Kehalani Modules 12 and 13 Subdivision, being also along the remainder of Grant 483 to E. Bailey on a curve to the left, having a radius of 475.00 feet, the chord azimuth and distance being: 260° 00' 164.97 feet to a point;

8. 250° 00' 249.01 feet along Lots 54, 79, 173 (Kupaloke Street) and 96 of Kehalani Modules 12 and 13 Subdivision, being also along the remainder of Grant 483 to E. Bailey to a point;
9. Thence along Lots 96 and 119 of Kehalani Modules 12 and 13 Subdivision, being also along the remainder of Grant 483 to E. Bailey on a curve to the right, having a radius of 1,025.00 feet, the chord azimuth and distance being: 252° 00' 71.54 feet to a point;
10. 254° 00' 42.14 feet along Lot 119 of Kehalani Modules 12 and 13 Subdivision, being also along the remainder of Grant 483 to E. Bailey to a point;
11. Thence along same on a curve to the left, with the point of curvature azimuth from the radial point being: 344° 00', and the point of tangency azimuth from the radial point being: 341° 50' 10", having a radius of 975.00 feet, the chord azimuth and distance being: 252° 55' 05" 36.82 feet to a point;
12. Thence along same on a curve to the left, with the point of curvature azimuth from the radial point being: 341° 50' 10", and the point of tangency azimuth from the radial point being: 250° 40', having a radius of 20.00 feet, the chord azimuth and distance being: 206° 15' 05" 28.57 feet to a point;

13. 340° 40' 11.78 feet along Lot 171 (Pua Kalaunu Loop) of Kehalani Modules 12 and 13 Subdivision, being also along the remainder of Grant 483 to E. Bailey to a point;
14. 342° 42' 34" 60.52 feet along same to a point;
15. 341° 22' 35" 17.96 feet along same to a point;
16. Thence along Lot 120 of Kehalani Modules 12 and 13 Subdivision, being also along the remainder of Grant 483 to E. Bailey on a curve to the left, with the point of curvature azimuth from the radial point being: 251° 22' 35", and the point of tangency azimuth from the radial point being: 161° 51' 57", having a radius of 20.00 feet, the chord azimuth and distance being: 116° 37' 16" 28.16 feet to a point;
17. Thence along same on a curve to the right, with the point of curvature azimuth from the radial point being: 341° 51' 57", and the point of tangency azimuth from the radial point being: 344° 00', having a radius of 1,025.00 feet, the chord azimuth and distance being: 72° 55' 58.5" 38.18 feet to a point;
18. 74° 00' 42.14 feet along same to a point;

19. Thence along Lots 120 and 95 of Kehalani Modules 12 and 13 Subdivision, being also along the remainder of Grant 483 to E. Bailey on a curve to the left, having a radius of 975.00 feet, the chord azimuth and distance being:
72° 00' 68.05 feet to a point;
20. 70° 00' 249.01 feet along Lots 95, 172 (Nānū Place), 80 and 53 of Kehalani Modules 12 and 13 Subdivision, being also along the remainder of Grant 483 to E. Bailey to a point;
21. Thence along Lots 53 and 170 (Pala`ā Place) of Kehalani Modules 12 and 13 Subdivision, being also along the remainder of Grant 483 to E. Bailey on a curve to the right, having a radius of 525.00 feet, the chord azimuth and distance being:
80° 00' 182.33 feet to a point;
22. 90° 00' 82.56 feet along Lots 170 and 39 of Kehalani Modules 12 and 13 Subdivision, being also along the remainder of Grant 483 to E. Bailey to a point;
23. Thence along Lots 39 and 7 of Kehalani Modules 12 and 13 Subdivision, being also along the remainder of Grant 483 to E. Bailey on a curve to the left, having a radius of 475.00 feet, the chord azimuth and distance being:
82° 50' 118.52 feet to a point;

**Kehalani Modules 12 and 13 Subdivision
Description of Lot 170 (Pala`ā Place)
Easement "W-3"**

Land situated on the westerly side of Honoapiilani Highway
(F.A.P. No. 13-G) at Wailuku, Maui, Hawaii

Being a portion of Grant 483 to E. Bailey.

Beginning at a point at the northwesterly corner of this lot, being also the northeasterly corner of Lot 39 of Kehalani Modules 12 and 13 Subdivision, the coordinates of said point of beginning referred to Government Survey Triangulation Station "LUKE" being 2,002.07 feet South and 4,990.08 feet West and running by azimuths measured clockwise from True South:

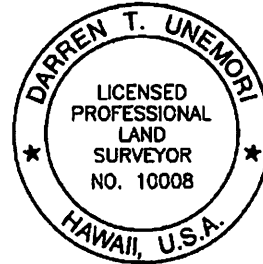
1. 270° 00' 7.05 feet along Lot 169 (Ohe Naupaka Street) of Kehalani Modules 12 and 13 Subdivision, being also along the remainder of Grant 483 to E. Bailey to a point;
2. Thence along same on a curve to the left, with the point of curvature azimuth from the radial point being: 360° 00', and the point of tangency azimuth from the radial point being: 351° 19' 36", having a radius of 525.00 feet, the chord azimuth and distance being: 265° 39' 48" 79.40 feet to a point;

3. Thence along Lot 53 of Kehalani Modules 12 and 13 Subdivision, being also along the remainder of Grant 483 to E. Bailey on a curve to the left, with the point of curvature azimuth from the radial point being: $171^{\circ} 19' 36''$, and the point of tangency azimuth from the radial point being: $75^{\circ} 40'$, having a radius of 20.00 feet, the chord azimuth and distance being: $33^{\circ} 29' 48''$ 29.65 feet to a point;
4. $345^{\circ} 40'$ 81.35 feet along Lots 53 and 52 of Kehalani Modules 12 and 13 Subdivision, being also along the remainder of Grant 483 to E. Bailey to a point;
5. Thence along Lots 52, 51 and 50 of Kehalani Modules 12 and 13 Subdivision, being also along the remainder of Grant 483 to E. Bailey on a curve to the left, having a radius of 2,841.79 feet, the chord azimuth and distance being: $344^{\circ} 05'$ 157.04 feet to a point;
6. $342^{\circ} 30'$ 24.86 feet along Lots 50 and 49 of Kehalani Modules 12 and 13 Subdivision, being also along the remainder of Grant 483 to E. Bailey to a point;

7. Thence along Lot 49 of Kehalani Modules 12 and 13 Subdivision, being also along the remainder of Grant 483 to E. Bailey on a curve to the left, with the point of curvature azimuth from the radial point being:
72° 30', and the point of tangency azimuth from the radial point being:
33° 05' 58", having a radius of 44.00 feet, the chord azimuth and distance being:
322° 47' 59" 29.66 feet to a point;
8. Thence along Lots 49, 48 and 47 of Kehalani Modules 12 and 13 Subdivision, being also along the remainder of Grant 483 to E. Bailey on a curve to the right, with the point of curvature azimuth from the radial point being:
213° 05' 58", and the point of tangency azimuth from the radial point being:
347° 10' 08", having a radius of 44.00 feet, the chord azimuth and distance being:
10° 08' 03" 81.03 feet to a point;
9. Thence along Lots 46 and 45 of Kehalani Modules 12 and 13 Subdivision, being also along the remainder of Grant 483 to E. Bailey on a curve to the right, with the point of curvature azimuth from the radial point being:
347° 10' 08", and the point of tangency azimuth from the radial point being:
111° 54' 02", having a radius of 44.00 feet, the chord azimuth and distance being:
139° 32' 05" 77.96 feet to a point;

10. Thence along Lots 45 and 44 of Kehalani Modules 12 and 13 Subdivision, being also along the remainder of Grant 483 to E. Bailey on a curve to the left, with the point of curvature azimuth from the radial point being: $291^{\circ} 54' 02''$, and the point of tangency azimuth from the radial point being: $252^{\circ} 30'$, having a radius of 44.00 feet, the chord azimuth and distance being: $182^{\circ} 12' 01''$ 29.66 feet to a point;
11. $162^{\circ} 30'$ 24.86 feet along Lot 44 of Kehalani Modules 12 and 13 Subdivision, being also along the remainder of Grant 483 to E. Bailey to a point;
12. Thence along Lots 44, 43, 42 and 41 of Kehalani Modules 12 and 13 Subdivision, being also along the remainder of Grant 483 to E. Bailey on a curve to the right, having a radius of 2,889.79 feet, the chord azimuth and distance being: $164^{\circ} 05'$ 159.69 feet to a point;
13. $165^{\circ} 40'$ 97.41 feet along Lots 41, 40 and 39 of Kehalani Modules 12 and 13 Subdivision, being also along the remainder of Grant 483 to E. Bailey to a point;

14. Thence along Lot 39 of Kehalani Modules 12 and 13 Subdivision, being also along the remainder of Grant 483 to E. Bailey on a curve to the left, with the point of curvature azimuth from the radial point being: 255° 40', and the point of tangency azimuth from the radial point being: 180° 00', having a radius of 20.00 feet, the chord azimuth and distance being: 127° 50' 24.53 feet to the point of beginning and containing an Area of 20,980 Square Feet.



WARREN S. UNEMORI ENGINEERING, INC.

Wells Street Professional Center
2145 Wells Street, Suite 403
Wailuku, Maui, Hawaii 96793
March 19, 2020

By:  4/30/22 Exp.
Licensed Professional Land Surveyor
Certificate No. 10008

As Prepared Under: Land Survey Descriptions, Part 1 of the 170 Revised

Kehalani Modules 12 and 13 Subdivision
Description of Lot 171 (Pua Kalaunu Loop and Laniuma Place)
Easement "W-4"

Land situated on the westerly side of Honoapiilani Highway
(F.A.P. No. 13-G) at Wailuku, Maui, Hawaii

Being a portion of Grant 483 to E. Bailey.

Beginning at a point at the southwesterly corner of this lot,
being also the southeasterly corner of Lot 38 of Kehalani Modules 12
and 13 Subdivision, the coordinates of said point of beginning
referred to Government Survey Triangulation Station "LUKE" being
1,952.07 feet South and 5,012.03 feet West and running by azimuths
measured clockwise from True South:

1. Thence along Lot 38 of Kehalani Modules 12 and 13 Subdivision,
being also along the remainder
of Grant 483 to E. Bailey on a
curve to the left, with the
point of curvature azimuth from
the radial point being:
360° 00', and the point of
tangency azimuth from the
radial point being:
255° 40', having a radius of
20.00 feet, the chord azimuth
and distance being:
217° 50' 31.59 feet to a
point;
2. 165° 40' 237.04 feet along Lots 38, 37, 36, 35 and
34 of Kehalani Modules 12 and
13 Subdivision, being also
along the remainder of
Grant 483 to E. Bailey to a
point;
3. Thence along Lots 34, 33, and 32 of Kehalani Modules 12 and 13
Subdivision, being also along
the remainder of Grant 483 to
E. Bailey on a curve to the
left, having a radius of
2,840.79 feet, the chord
azimuth and distance being:
164° 30' 115.68 feet to a
point;

4. 163° 20' 364.58 feet along Lots 32, 31, 30, 29, 28, 27, 26 and 25 of Kehalani Modules 12 and 13 Subdivision, being also along the remainder of Grant 483 to E. Bailey to a point;
5. Thence along Lot 25 of Kehalani Modules 12 and 13 Subdivision, being also along the remainder of Grant 483 to E. Bailey on a curve to the left, with the point of curvature azimuth from the radial point being: 253° 20', and the point of tangency azimuth from the radial point being: 220° 18' 30", having a radius of 43.00 feet, the chord azimuth and distance being: 146° 49' 15" 24.44 feet to a point;
6. Thence along Lots 25, 24, 164, 163 and 162 of Kehalani Modules 12 and 13 Subdivision, being also along the remainder of Grant 483 to E. Bailey on a curve to the right, with the point of curvature azimuth from the radial point being: 40° 18' 30", and the point of tangency azimuth from the radial point being: 201° 03' 40", having a radius of 44.00 feet, the chord azimuth and distance being: 210° 41' 05" 86.76 feet to a point;

7. Thence along Lot 162 of Kehalani Modules 12 and 13 Subdivision, being also along the remainder of Grant 483 to E. Bailey on a curve to the left, with the point of curvature azimuth from the radial point being:
 $21^{\circ} 03' 40''$, and the point of tangency azimuth from the radial point being:
 $350^{\circ} 00'$, having a radius of 43.00 feet, the chord azimuth and distance being:
 $275^{\circ} 31' 50''$ 23.03 feet to a point;
8. $260^{\circ} 00'$ 241.05 feet along Lots 162, 161, 160 and 159 of Kehalani Modules 12 and 13 Subdivision, being also along the remainder of Grant 483 to E. Bailey to a point;
9. Thence along Lots 159, 158, 157 and 156 of Kehalani Modules 12 and 13 Subdivision, being also along the remainder of Grant 483 to E. Bailey on a curve to the right, having a radius of 2,023.00 feet, the chord azimuth and distance being:
 $262^{\circ} 27' 30''$ 173.54 feet to a point;
10. $264^{\circ} 55'$ 40.06 feet along Lots 156 and 155 of Kehalani Modules 12 and 13 Subdivision, being also along the remainder of Grant 483 to E. Bailey to a point;

11. Thence along Lot 155 of Kehalani Modules 12 and 13 Subdivision, being also along the remainder of Grant 483 to E. Bailey on a curve to the left, with the point of curvature azimuth from the radial point being: 354° 55', and the point of tangency azimuth from the radial point being: 312° 35' 48", having a radius of 43.00 feet, the chord azimuth and distance being: 243° 45' 24" 31.04 feet to a point;
12. Thence along Lots 155, 153, 152 and 151 of Kehalani Modules 12 and 13 Subdivision, being also along the remainder of Grant 483 to E. Bailey on a curve to the right, with the point of curvature azimuth from the radial point being: 132° 35' 48", and the point of tangency azimuth from the radial point being: 262° 01' 10", having a radius of 44.00 feet, the chord azimuth and distance being: 287° 18' 29" 79.57 feet to a point;
13. 352° 01' 10" 69.58 feet along Lots 151 and 150 of Kehalani Modules 12 and 13 Subdivision, being also along the remainder of Grant 483 to E. Bailey to a point;

14. Thence along Lots 150, 149, 148, 147 and 146 of Kehalani Modules 12 and 13 Subdivision, being also along the remainder of Grant 483 to E. Bailey on a curve to the left, having a radius of 1,278.00 feet, the chord azimuth and distance being:
346° 20' 35" 252.81 feet to a point;
15. 340° 40' 402.62 feet along Lots 146, 145, 144, 143, 142, 141, 140 and 139 of Kehalani Modules 12 and 13 Subdivision, being also along the remainder of Grant 483 to E. Bailey to a point;
16. Thence along Lots 139, 166, 138, 137, 136, 135 and 134 of Kehalani Modules 12 and 13 Subdivision, being also along the remainder of Grant 483 to E. Bailey on a curve to the right, having a radius of 5,000.00 feet, the chord azimuth and distance being:
342° 30' 319.92 feet to a point;
17. 344° 20' 110.75 feet along Lots 134, 133 and 132 of Kehalani Modules 12 and 13 Subdivision, being also along the remainder of Grant 483 to E. Bailey to a point;

18. Thence along Lots 132 and 131 of Kehalani Modules 12 and 13 Subdivision, being also along the remainder of Grant 483 to E. Bailey on a curve to the left, with the point of curvature azimuth from the radial point being: $74^{\circ} 20'$, and the point of tangency azimuth from the radial point being: $34^{\circ} 55' 58''$, having a radius of 44.00 feet, the chord azimuth and distance being: $324^{\circ} 37' 59''$ 29.66 feet to a point;
19. Thence along Lots 131, 130 and 167 of Kehalani Modules 12 and 13 Subdivision, being also along the remainder of Grant 483 to E. Bailey on a curve to the right, with the point of curvature azimuth from the radial point being: $214^{\circ} 55' 58''$, and the point of tangency azimuth from the radial point being: $332^{\circ} 53' 24''$, having a radius of 44.00 feet, the chord azimuth and distance being: $3^{\circ} 54' 41''$ 75.41 feet to a point;
20. Thence along Lots 129, 128 and 127 of Kehalani Modules 12 and 13 Subdivision, being also along the remainder of Grant 483 to E. Bailey on a curve to the right, with the point of curvature azimuth from the radial point being: $332^{\circ} 53' 24''$, and the point of tangency azimuth from the radial point being: $113^{\circ} 44' 02''$, having a radius of 44.00 feet, the chord azimuth and distance being: $133^{\circ} 18' 43''$ 82.91 feet to a point;

21. Thence along Lot 127 of Kehalani Modules 12 and 13 Subdivision, being also along the remainder of Grant 483 to E. Bailey on a curve to the left, with the point of curvature azimuth from the radial point being:
293° 44' 02", and the point of tangency azimuth from the radial point being:
254° 20', having a radius of 44.00 feet, the chord azimuth and distance being:
184° 02' 01" 29.66 feet to a point;
22. 164° 20' 110.75 feet along Lots 127, 126 and 125 of Kehalani Modules 12 and 13 Subdivision, being also along the remainder of Grant 483 to E. Bailey to a point;
23. Thence along Lots 125, 124, 123, 122, 121 and 120 of Kehalani Modules 12 and 13 Subdivision, being also along the remainder of Grant 483 to E. Bailey on a curve to the left, having a radius of 4,952.00 feet, the chord azimuth and distance being:
162° 51' 17.5" 255.54 feet to a point;
24. 161° 22' 35" 17.96 feet along Lot 169 ('Ohe Naupaka Street) of Kehalani Modules 12 and 13 Subdivision, being also along the remainder of Grant 483 to E. Bailey to a point;
25. 162° 42' 34" 60.52 feet along same to a point;

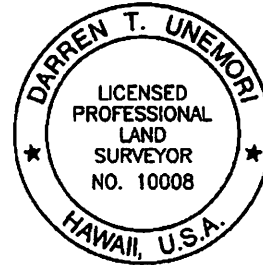
26. 160° 40' 385.51 feet along Lots 169 ('Ohe Naupaka Street), 119, 118, 117, 116, 115, 114, 113 and 112 of Kehalani Modules 12 and 13 Subdivision, being also along the remainder of Grant 483 to E. Bailey to a point;
27. Thence along Lots 112, 111, 110, 109, 108 and 107 of Kehalani Modules 12 and 13 Subdivision, being also along the remainder of Grant 483 to E. Bailey on a curve to the right, with the point of curvature azimuth from the radial point being: 70° 40', and the point of tangency azimuth from the radial point being: 81° 52' 24", having a radius of 1,324.00 feet, the chord azimuth and distance being: 166° 16' 12" 258.55 feet to a point;
28. Thence along Lot 107 of Kehalani Modules 12 and 13 Subdivision, being also along the remainder of Grant 483 to E. Bailey on a curve to the left, with the point of curvature azimuth from the radial point being: 261° 52' 24", and the point of tangency azimuth from the radial point being: 174° 55', having a radius of 51.00 feet, the chord azimuth and distance being: 128° 23' 42" 70.18 feet to a point;
29. 84° 55' 49.40 feet along same to a point;

30. Thence along Lots 107, 106 and 173 (Kupaloke Street) of Kehalani Modules 12 and 13 Subdivision, being also along the remainder of Grant 483 to E. Bailey on a curve to the left, having a radius of 1,977.00 feet, the chord azimuth and distance being: 82° 27' 30" 169.60 feet to a point;
31. 80° 00' 210.77 feet along Lots 173 (Kupaloke Street), 66 and 65 of Kehalani Modules 12 and 13 Subdivision, being also along the remainder of Grant 483 to E. Bailey to a point;
32. Thence along Lot 65 of Kehalani Modules 12 and 13 Subdivision, being also along the remainder of Grant 483 to E. Bailey on a curve to the left, having a radius of 51.00 feet, the chord azimuth and distance being: 31° 40' 76.20 feet to a point;
33. 343° 20' 338.23 feet along Lots 65, 64, 63, 62, 61 and 60 of Kehalani Modules 12 and 13 Subdivision, being also along the remainder of Grant 483 to E. Bailey to a point;
34. Thence along Lots 60, 59 and 58 of Kehalani Modules 12 and 13 Subdivision, being also along the remainder of Grant 483 to E. Bailey on a curve to the right, having a radius of 2,886.79 feet, the chord azimuth and distance being: 344° 30' 117.55 feet to a point;

35. 345° 40' 255.08 feet along Lots 58, 57, 56, 55 and 54 of Kehalani Modules 12 and 13 Subdivision, being also along the remainder of Grant 483 to E. Bailey to a point;
36. Thence along Lot 54 of Kehalani Modules 12 and 13 Subdivision, being also along the remainder of Grant 483 to E. Bailey on a curve to the left, with the point of curvature azimuth from the radial point being: 75° 40', and the point of tangency azimuth from the radial point being: 352° 34' 40", having a radius of 20.00 feet, the chord azimuth and distance being: 304° 07' 20" 26.53 feet to a point;
37. Thence along Lot 169 (Ohe Naupaka Street) of Kehalani Modules 12 and 13 Subdivision, being also along the remainder of Grant 483 to E. Bailey on a curve to the right, with the point of curvature azimuth from the radial point being: 352° 34' 40", and the point of tangency azimuth from the radial point being: 0° 00', having a radius of 475.00 feet, the chord azimuth and distance being: 86° 17' 20" 61.49 feet to a point;


38. 90° 00'

29.01 feet along same to the point of
beginning and containing an
Area of 128,762 Square Feet.



WARREN S. UNEMORI ENGINEERING, INC.

Wells Street Professional Center
2145 Wells Street, Suite 403
Wailuku, Maui, Hawaii 96793
March 19, 2020

By:  4/30/22 Exp.
Licensed Professional Land Surveyor
Certificate No. 10008

10-10-2020 10:00 AM 10:00 AM 10:00 AM 10:00 AM 10:00 AM 10:00 AM 10:00 AM 10:00 AM 10:00 AM 10:00 AM

Kahalani Modules 12 and 13 Subdivision
Description of Lot 172 (Nānū Place)
Easement "W-5"

Land situated on the westerly side of Honoapiilani Highway
(F.A.P. No. 13-G) at Wailuku, Maui, Hawaii

Being a portion of Grant 483 to E. Bailey.

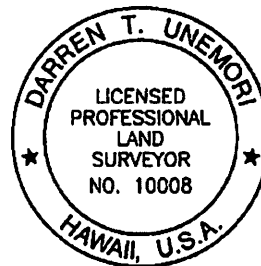
Beginning at a point at the northwesterly corner of this lot, being also the northeasterly corner of Lot 80 of the Kehalani Modules 12 and 13 Subdivision, the coordinates of said point of beginning referred to Government Survey Triangulation Station "LUKE" being 1,933.74 feet South and 4,702.73 feet West and running by azimuths measured clockwise from True South:

1. 250° 00' 88.10 feet along Lot 169 ('Ohe Naupaka Street) of Kehalani Modules 12 and 13 Subdivision, being also along the remainder of Grant 483 to E. Bailey to a point;
2. Thence along Lot 95 of Kehalani Modules 12 and 13 Subdivision, being also along the remainder of Grant 483 to E. Bailey on a curve to the left, with the point of curvature azimuth from the radial point being: 160° 00', and the point of tangency azimuth from the radial point being: 72° 40', having a radius of 20.00 feet, the chord azimuth and distance being: 26° 20' 27.62 feet to a point;
3. 342° 40' 106.09 feet along Lots 95 and 94 of Kehalani Modules 12 and 13 Subdivision, being also along the remainder of Grant 483 to E. Bailey to a point;

4. Thence along Lots 94, 93, 92, 91 and 90 of Kehalani Modules 12 and 13 Subdivision, being also along the remainder of Grant 483 to E. Bailey on a curve to the right, with the point of curvature azimuth from the radial point being: $252^{\circ} 40'$, and the point of tangency azimuth from the radial point being: $258^{\circ} 14' 03''$, having a radius of 2,023.00 feet, the chord azimuth and distance being: $345^{\circ} 27' 01.5''$ 196.50 feet to a point;
5. Thence along Lot 90 of Kehalani Modules 12 and 13 Subdivision, being also along the remainder of Grant 483 to E. Bailey on a curve to the left, with the point of curvature azimuth from the radial point being: $78^{\circ} 14' 03''$, and the point of tangency azimuth from the radial point being: $39^{\circ} 36' 52''$, having a radius of 44.00 feet, the chord azimuth and distance being: $328^{\circ} 55' 27.5''$ 29.10 feet to a point;
6. Thence along Lots 90, 89 and 88 of Kehalani Modules 12 and 13 Subdivision, being also along the remainder of Grant 483 to E. Bailey on a curve to the right, with the point of curvature azimuth from the radial point being: $219^{\circ} 36' 52''$, and the point of tangency azimuth from the radial point being: $342^{\circ} 26' 06''$, having a radius of 44.00 feet, the chord azimuth and distance being: $11^{\circ} 01' 29''$ 77.27 feet to a point;


7. Thence along Lots 87 and 86 of Kehalani Modules 12 and 13 Subdivision, being also along the remainder of Grant 483 to E. Bailey on a curve to the right, with the point of curvature azimuth from the radial point being: $342^{\circ} 26' 06''$, and the point of tangency azimuth from the radial point being: $118^{\circ} 24' 06''$, having a radius of 44.00 feet, the chord azimuth and distance being: $140^{\circ} 25' 06''$ 81.58 feet to a point;
8. Thence along Lot 85 of Kehalani Modules 12 and 13 Subdivision, being also along the remainder of Grant 483 to E. Bailey on a curve to the left, with the point of curvature azimuth from the radial point being: $298^{\circ} 24' 06''$, and the point of tangency azimuth from the radial point being: $258^{\circ} 10' 47''$, having a radius of 44.00 feet, the chord azimuth and distance being: $188^{\circ} 17' 26.5''$ 30.26 feet to a point;
9. Thence along Lots 85, 84, 83 and 82 of Kehalani Modules 12 and 13 Subdivision, being also along the remainder of Grant 483 to E. Bailey on a curve to the left, with the point of curvature azimuth from the radial point being: $258^{\circ} 10' 47''$, and the point of tangency azimuth from the radial point being: $252^{\circ} 40'$, having a radius of 1,975.00 feet, the chord azimuth and distance being: $165^{\circ} 25' 23.5''$ 189.96 feet to a point;

10. 162° 40' 101.99 feet along Lots 82, 81 and 80 of Kehalani Modules 12 and 13 Subdivision, being also along the remainder of Grant 483 to E. Bailey to a point;
11. Thence along Lot 80 of Kehalani Modules 12 and 13 Subdivision, being also along the remainder of Grant 483 to E. Bailey on a curve to the left, with the point of curvature azimuth from the radial point being: 252° 40', and the point of tangency azimuth from the radial point being: 160° 00', having a radius of 20.00 feet, the chord azimuth and distance being: 116° 20' 28.93 feet to the point of beginning and containing an Area of 22,246 Square Feet.



WARREN S. UNEMORI ENGINEERING, INC.

Wells Street Professional Center
2145 Wells Street, Suite 403
Wailuku, Maui, Hawaii 96793
March 19, 2020

By:  4/30/22 Exp.
Licensed Professional Land Surveyor
Certificate No. 10008

At: Proprietary Exhibit 16015 Survey Descriptions Desc. of Lot 17A rev02.doc

**Kehalani Modules 12 and 13 Subdivision
Description of Lot 173 (Kupaloke Street)
Easement "W-6"**

Land situated on the westerly side of Honoapiilani Highway
(F.A.P. No. 13-G) at Wailuku, Maui, Hawaii

Being a portion of Grant 483 to E. Bailey.

Beginning at a point at the southwesterly corner of this lot,
being also the southeasterly corner of Lot 79 of Kehalani Modules 12
and 13 Subdivision, the coordinates of said point of beginning
referred to Government Survey Triangulation Station "LUKE" being
1,884.98 feet South and 4,714.94 feet West and running by azimuths
measured clockwise from True South:

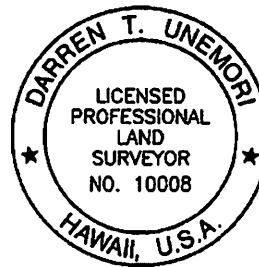
1. Thence along Lot 79 of Kehalani Modules 12 and 13 Subdivision,
being also along the remainder
of Grant 483 to E. Bailey on a
curve to the left, with the
point of curvature azimuth from
the radial point being:
340° 00', and the point of
tangency azimuth from the
radial point being:
252° 40', having a radius of
20.00 feet, the chord azimuth
and distance being:
206° 20' 27.62 feet to a
point;
2. 162° 40' 171.94 feet along Lots 79, 78, 77 and 76 of
Kehalani Modules 12 and 13
Subdivision, being also along
the remainder of Grant 483 to
E. Bailey to a point;
3. Thence along Lots 76, 75, 74, 73, 72, 71, 70, 69, 68 and 67 of
Kehalani Modules 12 and 13
Subdivision, being also along
the remainder of Grant 483 to
E. Bailey on a curve to the
right, having a radius of
3,843.72 feet, the chord
azimuth and distance being:
166° 20' 491.63 feet to a
point;

4. 170° 00' 53.05 feet along Lots 67 and 66 of Kehalani Modules 12 and 13 Subdivision, being also along the remainder of Grant 483 to E. Bailey to a point;
5. Thence along Lot 66 of Kehalani Modules 12 and 13 Subdivision, being also along the remainder of Grant 483 to E. Bailey on a curve to the left, with the point of curvature azimuth from the radial point being: 260° 00', and the point of tangency azimuth from the radial point being: 170° 00', having a radius of 20.00 feet, the chord azimuth and distance being: 125° 00' 28.28 feet to a point;
6. 260° 00' 15.05 feet along Lot 171 (Pua Kalaunu Loop) of Kehalani Modules 12 and 13 Subdivision, being also along the remainder of Grant 483 to E. Bailey to a point;
7. Thence along same on a curve to the right, with the point of curvature azimuth from the radial point being: 170° 00', and the point of tangency azimuth from the radial point being: 172° 04' 39", having a radius of 1,977.00 feet, the chord azimuth and distance being: 261° 02' 19.5" 71.68 feet to a point;

8. Thence along Lot 106 of Kehalani Modules 12 and 13 Subdivision, being also along the remainder of Grant 483 to E. Bailey on a curve to the left, with the point of curvature azimuth from the radial point being: $172^{\circ} 04' 39''$, and the point of tangency azimuth from the radial point being: $80^{\circ} 00'$, having a radius of 20.00 feet, the chord azimuth and distance being: $36^{\circ} 02' 19.5''$ 28.79 feet to a point;
9. $350^{\circ} 00'$ 51.77 feet along same to a point;
10. Thence along Lots 106, 105, 104, 103, 102, 101, 100, 99 and 98 of Kehalani Modules 12 and 13 Subdivision, being also along the remainder of Grant 483 to E. Bailey on a curve to the left, having a radius of 3,797.72 feet, the chord azimuth and distance being: $346^{\circ} 20'$ 485.74 feet to a point;
11. $342^{\circ} 40'$ 167.93 feet along Lots 98, 97 and 96 of Kehalani Modules 12 and 13 Subdivision, being also along the remainder of Grant 483 to E. Bailey to a point;
12. Thence along Lot 96 of Kehalani Modules 12 and 13 Subdivision, being also along the remainder of Grant 483 to E. Bailey on a curve to the left, with the point of curvature azimuth from the radial point being: $72^{\circ} 40'$, and the point of tangency azimuth from the radial point being: $340^{\circ} 00'$, having a radius of 20.00 feet, the chord azimuth and distance being: $296^{\circ} 20'$ 28.93 feet to a point;

13. 70° 00'

86.09 feet along Lot 169 (Ohe Naupaka Street) of Kehalani Modules 12 and 13 Subdivision, being also along the remainder of Grant 483 to E. Bailey to the point of beginning and containing an Area of 34,928 Square Feet.



WARREN S. UNEMORI ENGINEERING, INC.

Wells Street Professional Center
2145 Wells Street, Suite 403
Wailuku, Maui, Hawaii 96793
March 19, 2020

By:  4/30/22 Exp.
Licensed Professional Land Surveyor
Certificate No. 10008

1. The above is a true and correct copy of the original as shown to me by the surveyor.

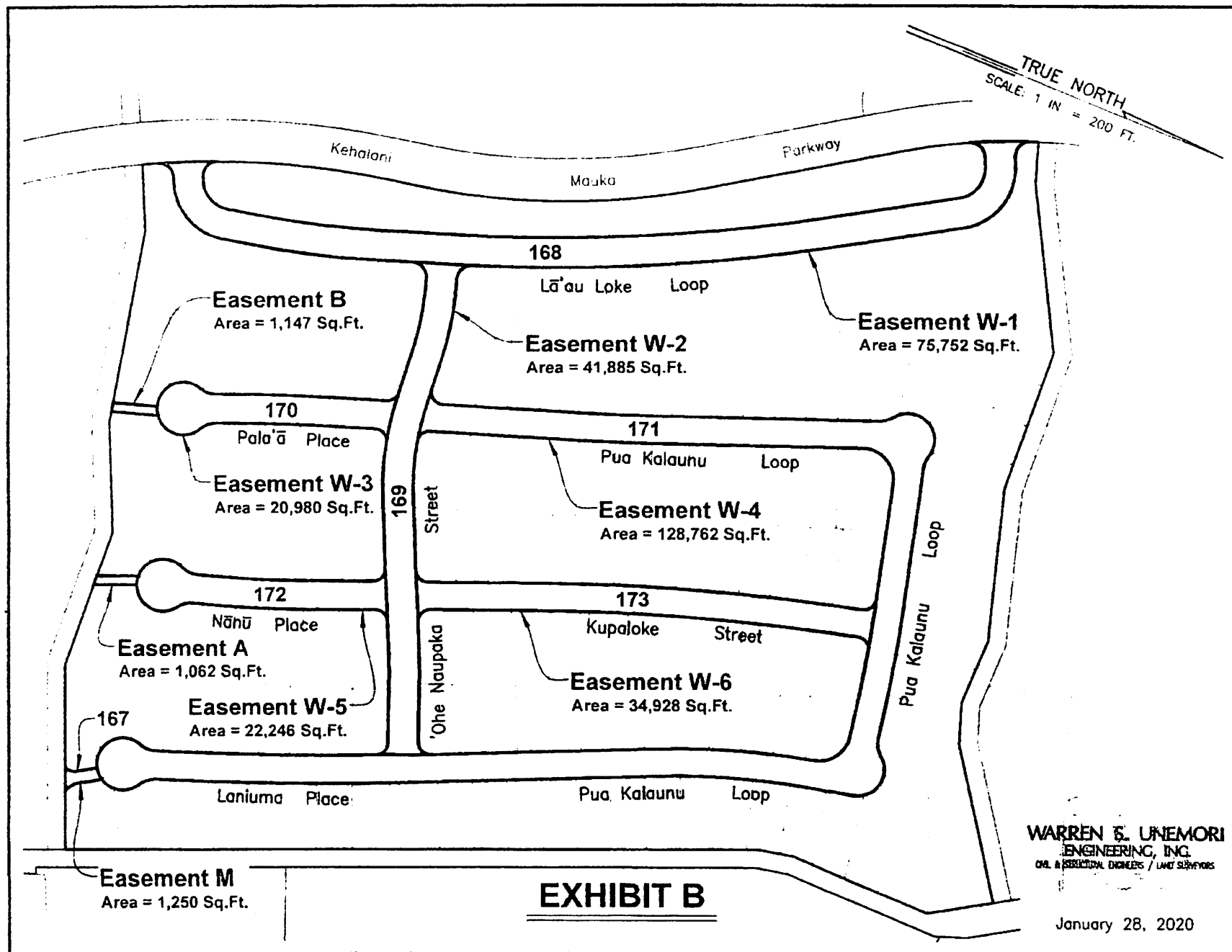


EXHIBIT B