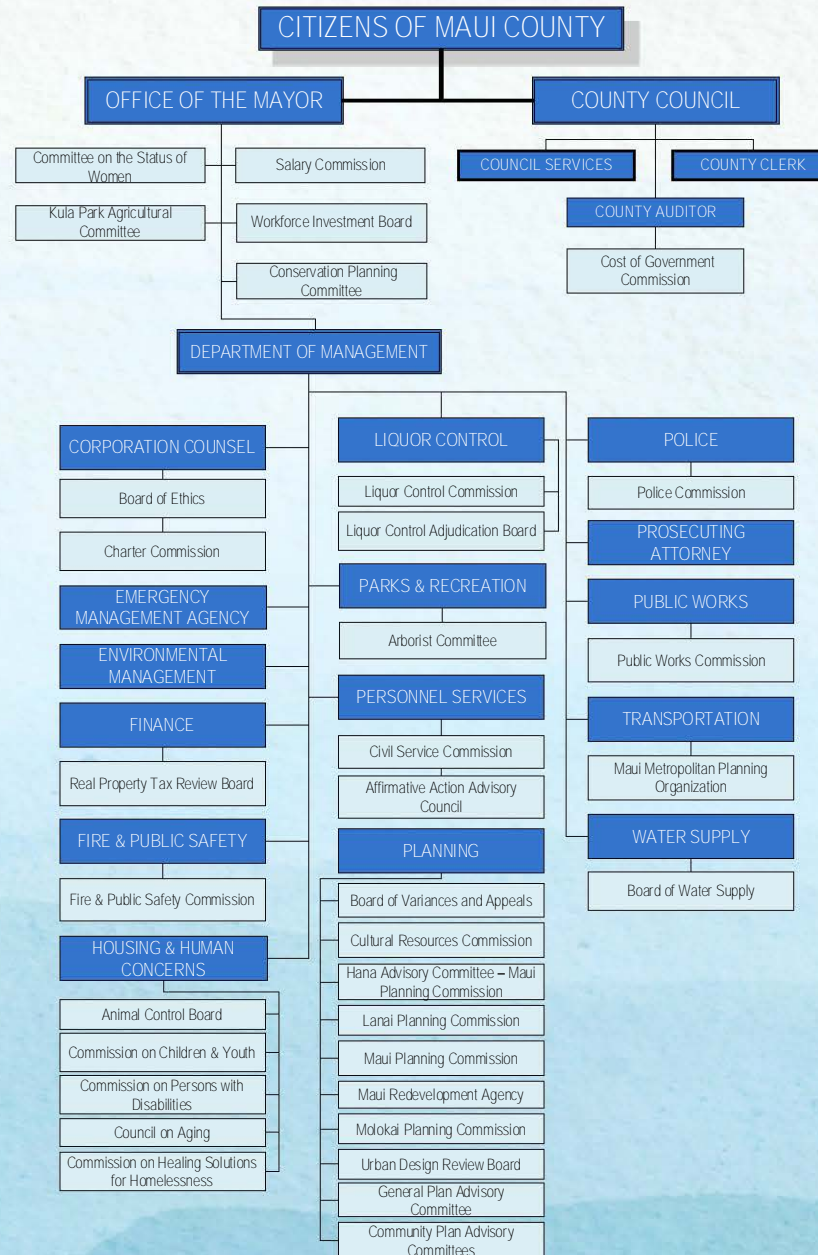


## Proposed Real Property Tax Rates

Classification	FY 2021 Adopted	FY 2022 Proposed	Change \$	Change %
Non Owner Occupied				
<=\$800,000	\$5.45	\$5.45	\$0.00	0.0%
\$800,001 - \$1,500,000	\$6.05	\$6.05	\$0.00	0.0%
>\$1,500,000	\$6.90	\$7.50	\$0.60	8.7%
Apartment	\$5.55	\$5.55	\$0.00	0.0%
Commercial	\$0.00	\$6.29	\$6.29	N/A
<=\$800,000	\$6.29	\$0.00	(\$6.29)	-100.0%
\$800,001 - \$1,500,000	\$6.29	\$0.00	(\$6.29)	-100.0%
>\$1,500,000	\$6.29	\$0.00	(\$6.29)	-100.0%
Industrial	\$7.20	\$7.20	\$0.00	0.0%
Agricultural	\$5.94	\$5.94	\$0.00	0.0%
Conservation	\$6.43	\$6.43	\$0.00	0.0%
Hotel and Resort	\$10.70	\$10.70	\$0.00	0.0%
Time Share	\$14.40	\$14.40	\$0.00	0.0%
Short Term Rental				
<=\$800,000	\$11.08	\$10.70	(\$0.38)	-3.4%
\$800,001 - \$1,500,000	\$11.08	\$10.85	(\$0.23)	-2.1%
>\$1,500,000	\$11.08	\$11.00	(\$0.08)	-0.7%
Owner Occupied				
<=\$800,000	\$2.51	\$2.41	(\$0.10)	-4.0%
\$800,001 - \$1,500,000	\$2.56	\$2.51	(\$0.05)	-2.0%
>\$1,500,000	\$2.61	\$2.61	\$0.00	0.0%
Commercial Residential	\$4.40	\$4.40	\$0.00	0.0%
Minimum Tax	\$400.00	\$350.00	(\$50.00)	-12.5%

## COUNTY OF MAUI



**MICHAEL P. VICTORINO**  
*Mayor*  
*County of Maui*



## FY 2022 PROPOSED BUDGET SYNOPSIS



THE FULL FISCAL YEAR 2022 PROGRAM BUDGET, CAPITAL  
 IMPROVEMENT PROGRAM, AND  
 ORDINANCES ARE AVAILABLE ONLINE AT  
[www.mauicounty.gov/1896/Budget-Documents-Ordinances](http://www.mauicounty.gov/1896/Budget-Documents-Ordinances)

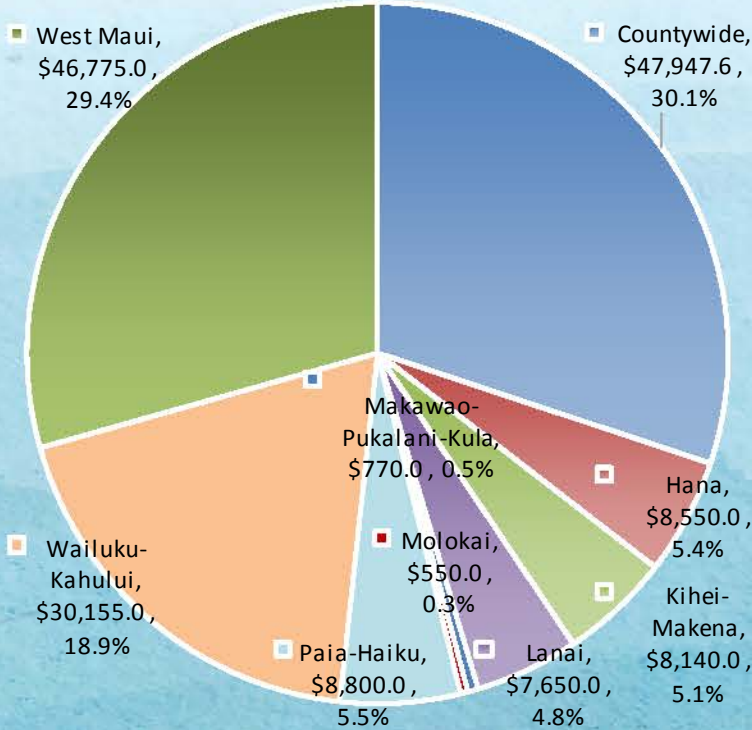
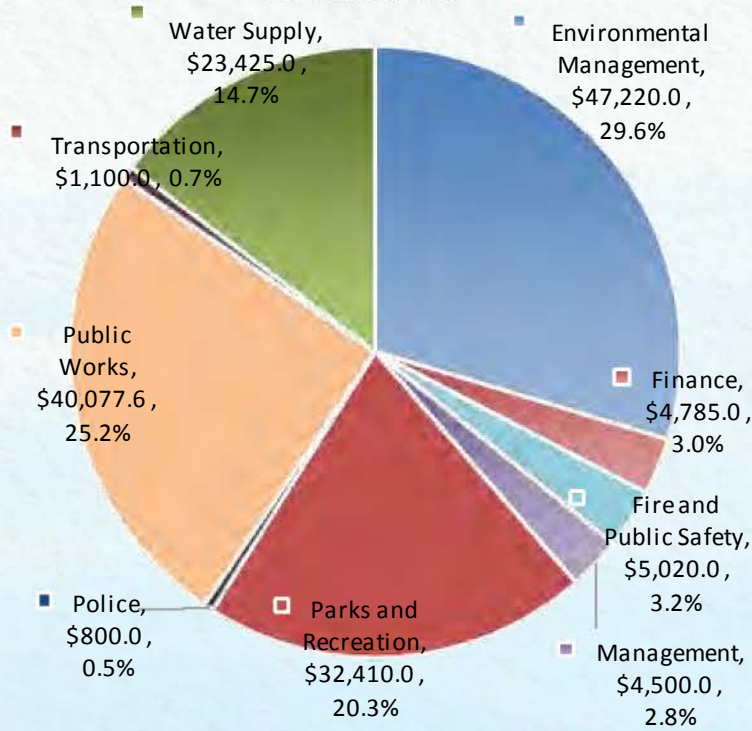
**OFFICE OF THE MAYOR**  
**200 SOUTH HIGH STREET, 9TH FLOOR**  
**WAILUKU, HI 96793**

Phone: 808-270-7855 [www.mauicounty.gov/budget](http://www.mauicounty.gov/budget)



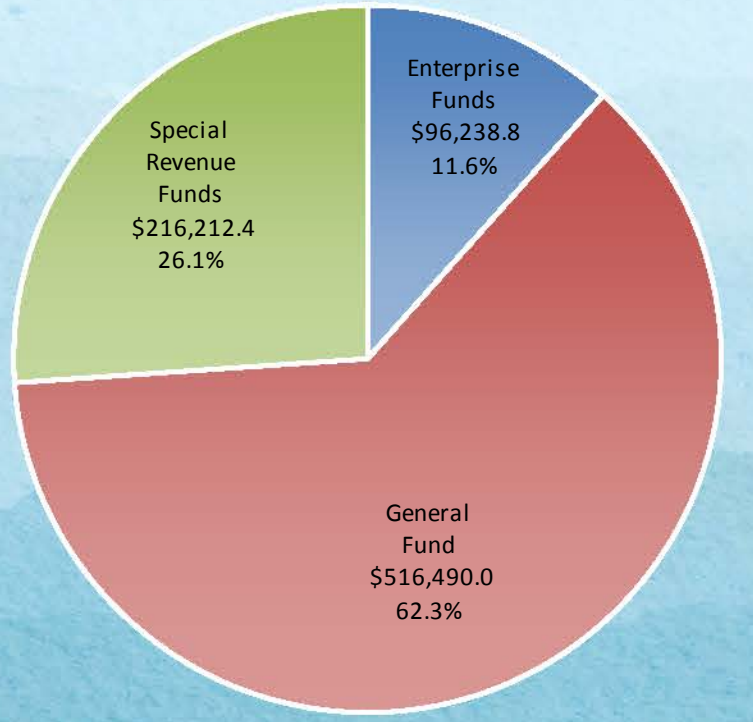
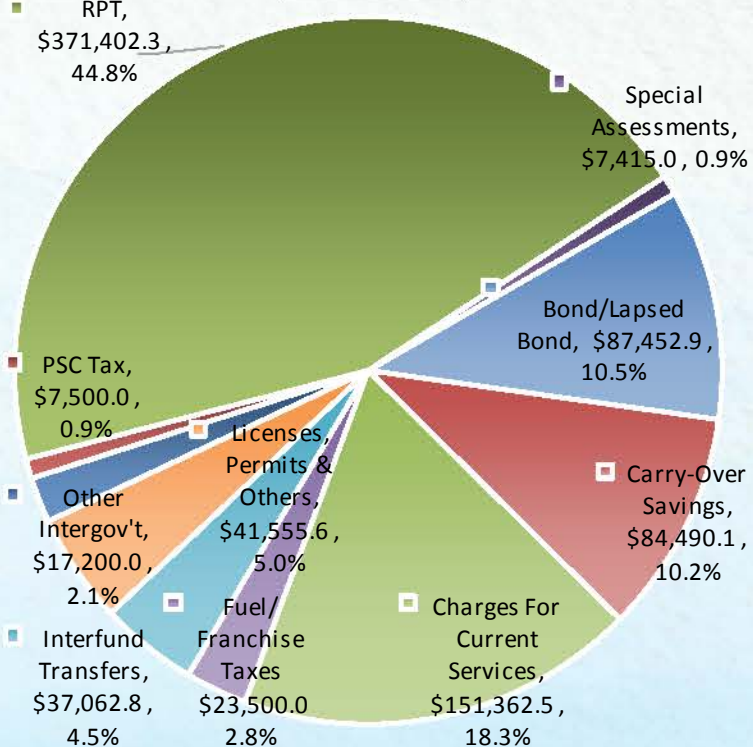
Proposed Capital Projects by Department and District

In Thousands



Proposed Revenues (County Sources)

In Thousands



Proposed Operating Expenditures by Department

In Thousands

MAJOR USES		FY 2022 PROPOSED
GENERAL FUND		
Corporation Counsel		\$4,287.5
County Clerk		\$2,009.4
County Council		\$8,580.5
Emergency Management Agency		\$1,112.4
Environmental Management		\$647.0
Finance		\$207,706.3
Fire and Public Safety		\$45,676.1
Housing and Human Concerns		\$26,399.6
Management		\$15,010.1
Office of the Mayor		\$21,374.8
Parks and Recreation		\$35,488.4
Personnel Services		\$1,889.4
Planning		\$6,717.2
Police		\$63,338.8
Prosecuting Attorney		\$7,968.6
Public Works		\$13,033.9
Transportation		\$7,150.0
TOTAL GENERAL FUND		\$468,390.0
SPECIAL REVENUE FUNDS		
Environmental Management		\$84,406.7
Liquor Control		\$3,101.0
Public Works		\$33,018.8
Transportation		\$7,873.3
TOTAL SPECIAL REVENUE FUNDS		\$128,399.8
ENTERPRISE FUNDS		
Parks and Recreation		\$0.0
Water Supply		\$72,813.8
TOTAL ENTERPRISE FUNDS		\$72,813.8
TOTAL COUNTY FUNDS		\$669,603.6

Note: True sum may be different due to rounding.